

# Ultra Flow SA



## Single Line Lubrication Systems

- Pump oil and grease
- Multiple grease filling ways
- Powerful centralized control system
- Multiple voltages available

## Single line lubrication system (SLS) General information

### Single-line lubrication systems

For small-to-medium line length and almost all lubricants

Regardless of the application, the principle of single-line lubrication remains the same: a central pump station automatically delivers lubricant through a single supply line to the lubricant metering device. Each metering device serves only one lubrication point and may be adjusted to deliver the precise amount of grease or oil required.

Systems can service one machine, different zones on one machine or even several separate machines.

### Benefits

- Easy to understand, install and maintain
- Suitable for almost all lubricants
- Reliable
- Easy system expansion
- System continues to operate if one point becomes blocked
- Able to pump long distances and within a wide temperature range

### Applications

- Machine tools
- Automation
- Printing machines
- On/Off-road machines
- Construction and forestry machines
- Cement industry
- Food and beverage

### Pre-lubrication metering devices

A pump feeds the lubricant through the main line to the lubricant metering device. These discharge a prestored amount of lubricant to the lube points as a result of the pump's pressure. The main line is then relieved of pressure so that the metered lubricant can be shifted to the accumulator inside the device. It is then delivered in the next lube cycle.

### Re-lubrication metering devices

During the lube cycle the lubricant is fed into the accumulator chambers of the lubricant metering devices, this quantity being discharged only after the main line has been relieved of pressure (relubrication effect).

The metered quantities of both types of metering devices can be easily changed by replacement of their metering nipples.



## Single line lubrication system (SLS) General information

### Size of Pipes Effecting a Single Line Lubrication System

The size of pipes in a single line lubrication system significantly affects the system's performance and efficiency. Smaller pipe sizes can lead to higher friction losses, requiring larger system supply pressures to maintain flow. This can increase the capital cost and operating costs of the system. Conversely, larger pipe sizes can reduce friction losses but may require more powerful pumps to overcome the pressure drop.

Factors such as economics, velocity/turbulence, pressure drop effects, line holdup, space requirements, and expansion effects all play a role in determining the appropriate pipe size for a single line lubrication system. These factors must be carefully considered to ensure the system operates effectively and economically.

### Suggested sizes of pipes for small to medium SLS

Polymer hose (Polyamide) 8.6X4.2mm main line >10M

Polymer hose (Polyamide) 11X6mm main line >15M

Steel pipe 6X1 and 8X1 main line < 10M

Nylon pipe 6X1.2mm main line <10M

Nylon pipes 4 & 6mm secondary lines - max 3M

### Suggested Lubricants

For re-lubrication systems which operate generally for smaller to medium size pumps - NLGI-000 to NLGI -1

For pre-lubrication systems which operate generally for larger system and high pressure - NLGI -2

**NOTE:** Do not mix greases, grease types with different viscosities cannot be mixed. Always work clean.

## Single line lubrication system (SLS) General information

### System function

Pre-lubrication and Re-lubrication metering devices are suitable for use with single line, lubrication systems for oil and fluid greases. The combination of these metering devices with one - to six-port manifolds provides flexible options for system design. Manifolds customized for product series are available in aluminum and stainless steel. The basic principle of how a single line system works are by 4 factors as listed.

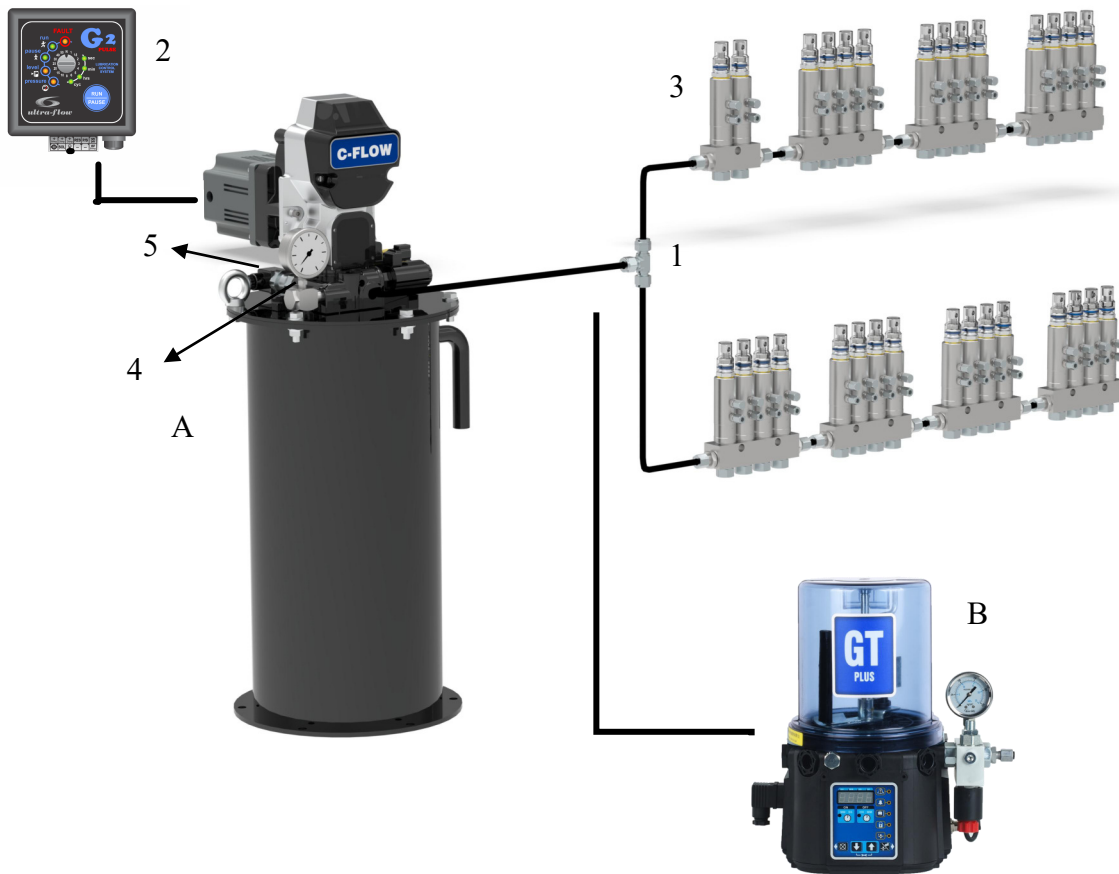
- Pump
- Controller
- Metering devices
- Accessories

The pump would be energised from the controller. As the pump delivers lubrication to the main lines, pressure would start rising as the main line is blocked at the end of circuit. This means that the grease in the mainline cannot escape hence a pressure rise. In the mainline there will be a sequence of manifolds of different sizes connected in series and close to the areas required for lubrication. As pressure climbs the individual metering dosers will activate and force the grease trapped in the doser chamber out into the secondary line which is connected to the bearings. The pump will continue to pump until the desired pressure is reached via a pressure switch connected in the series circuit. As pressure is reached the controller will activate a solenoid valve which is also connected to the mainline and dump/relieve the pressure back to the pump reservoir. As this occurs the pressure indicated on the pressure gauge should drop to zero indicating that the mainline circuit has no pressure within. At this point the dosers will recharge itself thru the principal of pre-lubrication. This will ready itself for the next cycle of lubrication and determined by the controller.

A pre-lubrication injector delivers the lubricant while the pressure builds up in the line. A relubrication injector delivers the lubricant when the main line is unloaded or after it has been unloaded. In order to pump lubricant into the distributor again, the pressure in the line must be reduced so that the necessary regrouping can take place in the distributor. The pressure is then built up again to continue lubricant delivery.



## Typical Line diagram for SLS



- A — C-FLOW lubrication pump
- B — GTS lubrication pump
- 1 — Tee branching pieces
- 2 — Controller
- 3 — VL Series Injector Valves
- 4 — Pressure gauge
- 5 — Sensors (pressure switch)

# C-FLOW Electric Pump



Ultra Flow SA. recently introduced a new line of reciprocating pumps to meet the lubrication needs of heavy-duty equipment such as those used in mining, construction, fleet maintenance and other applications.

The new 24-VDC electric lubrication pumps supply grease to injector-based, series progressive and dual-line metering systems.

The C Flow HF (high flow) model is capable of 240 bar + with a maximum output of 74cc/min. It features a vent and fill path design that instantly converts a drum into an injector-based system without the need for extra hoses or drilling holes into the drum cover or follower plate.

Each pump incorporates helical hardened steel gears that are lubricated for life and sealed to keep out contaminants for longer lasting performance.



## Applications

- Oil Transfer
- Grease Transfer
- Off-road Lubrication
- Series Progressive Lubrication
- Single Line Parallel Lubrication
- Single Line Resistive Lubrication
- Spray Lubrication



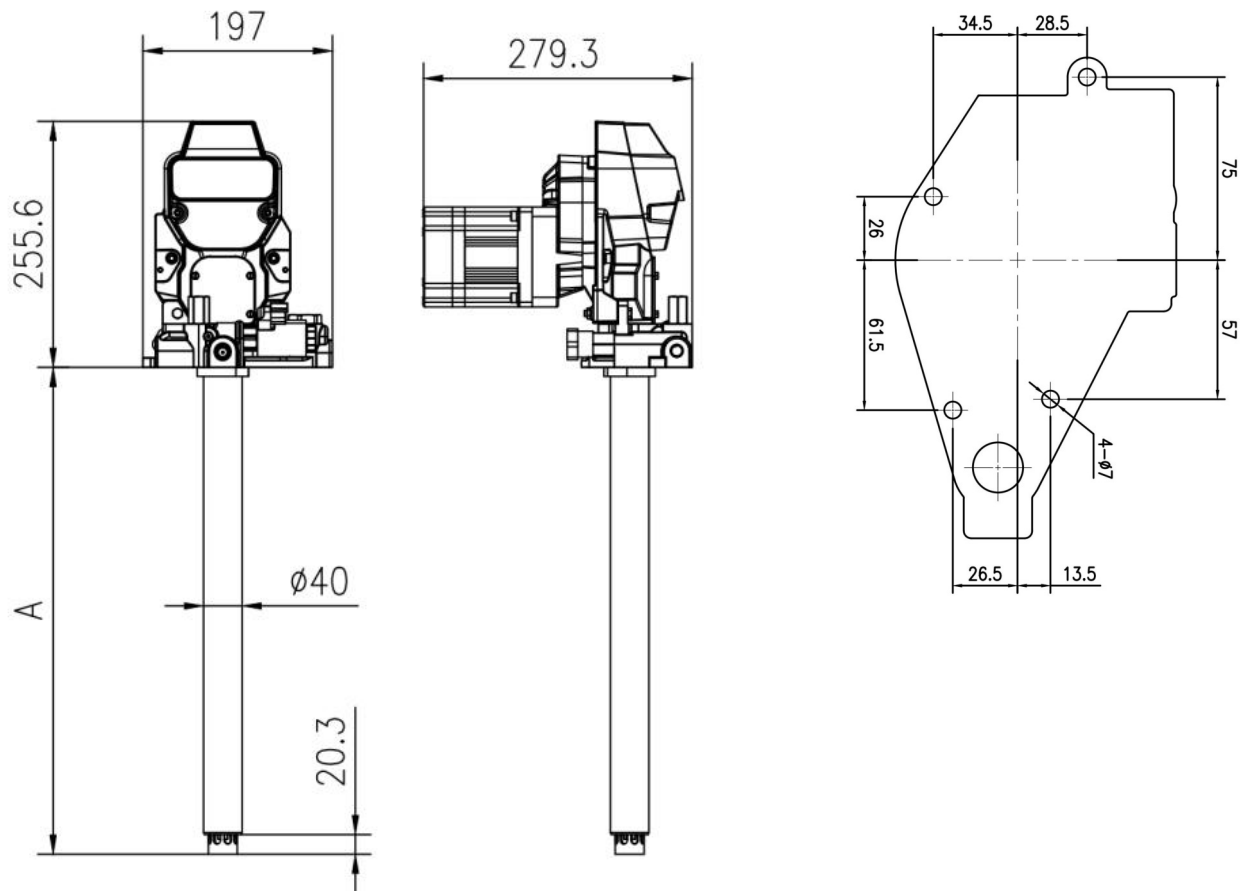
---

## Technical Specifications

Max.Operating pressure	Max. 241Bar
Operating temperature	-40°C ~ 65°C
Voltage	24VDC
Rated current	11.9A
Flow rate	Max. 74ml/min
Reservoir	12L (With reservoir ) 20L ( With reservoir ) 35 lb (Without reservoir, use the original lubricant bucket) 27KG (Without reservoir) 41KG (Without reservoir)
Outlets	NPT3/8 or NPT1/4
Relief valve port	1/2" Thread
Inlet port	Push-in fittings
Material	Carbon Steel、 Stainless Steel

# Dimensions (mm)

Standalone pump, without oil tank

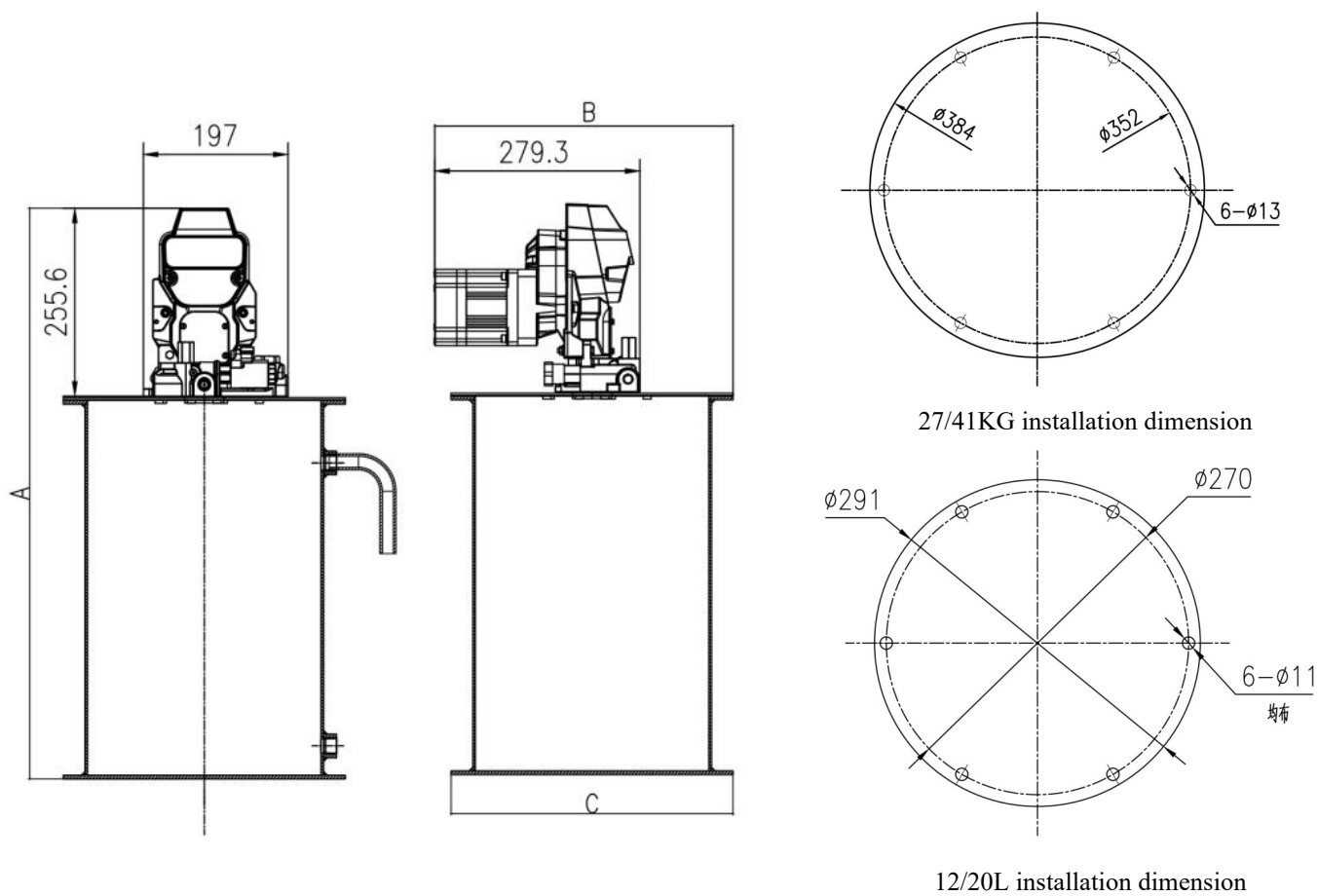


Reservoir	A
12L/35lb	354.6
20L/27KG	506
41KG	711



# Dimensions (mm)

## With tank dimensions



Reservoir	A	B	C
12L	630	360	291
20L	781	360	291
27KG	777	406	384
41KG	982	406	384

## Ordering Information

C-FLOW-

--	--	--	--

### Pump Description

- 1 = 12L Tanklength, 24VDC/35 lb bucket length, 24VDC (Do not mix the
- Tank, use the oil with the grease)
- 2 = 20L Tank length, 24VDC / 27KG Tank length, 24VDC
- 5 = 41KG Tank length, 24VDC

### Metering System Feedback

- 0 = Series progressive, no vent-valve, no pressure feedback (plugged outlet)
- 1 = Vent-valve, no pressure feedback (plugged outlet)
- 2 = Vent-valve, pressure switch (No line)

### Reservoir

- 0 = No reservoir, bare pump
- 1 = 12L steel reservoir, follower plate
- 2 = 20L steel reservoir, follower plate
- 3 = 35 lb plastic bucket kit-cover, follower plate (Tank not included)
- 4 = 12L steel reservoir, no follower plate
- 5 = 20L steel reservoir, no follower plate
- 6 = 27KG steel reservoir, follower plate
- 7 = 27KG steel reservoir, no follower plate
- 8 = 41KG steel reservoir, follower plate
- 9 = 41KG steel reservoir, no follower plate

### Reservoir Accessories

- 0 = None
- 2 = Liquid Level Sensor (with 2m Power Cord)

## Dimensions (mm)



Pump



Pump and Tank

## Ordering information

### Tank



Part №	KG	Description
UFC10101	12L	Tank kits
UFC10102	20L	Tank kits
UFC10103	27KG	Tank kits
UFC10104	41KG	Tank kits

Drum cover are supplied with bolts, vent cap, gasket and eyebolts.

Tank assembly ordering code includes complete drum cover.

Level sensor and follower plate must be ordered separately.

### Follower plate kits



Part №	KG
UFC25115	12L、20L
UFC25116	27KG、41KG

### Level sensor kits



Part №	KG
UFC25111	12L, with 2M cable
UFC25112	20L, with 2M cable
UFC25113	27KG, with 2M cable
UFC25114	41KG, with 2M cable

### Pressure switch



Part №	Measuring range	Description
UFC25118	50~400bar	No cable

The factory setting is 20Mpa

### Grease filling connector



Part №	Description	Thread
UF-80220	Male connector	R1/4
UF-80221	Female connector	G1/4

# Ultra Flow SA



## GTS Lubrication pump

- Pump oil and grease
- Multiple grease filling ways
- Powerful centralized control system
- Multiple voltages available

## THE SMALL PUMP PACKAGE WITH BIG FEATURES

GTS pump is a high pressure piston pump, Its design is particularly suitable for single-line systems.

With special materials, to achieve excellent anti-shock ability

Special design of pump make it easy to observe the oil level

and prevent UV radiation, prevent oil deterioration. With low liquid level alarm, flashing buzzer. Also can choose the type of output.

**There are two model modes:**

**Standard:** Can be managed by an external PLC. Since it does not come with an internal control unit, this is the most economic solution for lubricating your systems.

**Automatic:** With integrated control system, which can be set up local running time. Equipped with local operation and alarm light, alarm with buzzer, provide low level and pulse alarm, which can be combined with the monitor of distributor units into a perfect operating system.



### Characteristics

- Pump oil and grease
- Reservoirs : 2L、 4L、 6L、 8L
- Voltages : 12VDC / 24VDC、 110VAC / 220VAC
- Multiple grease filling ways
- Powerful centralized control system
- CE Certification
- Design patent
- IP67

### Application

- Heavy Vehicles
- Heavy industries
- Chain&Gear
- Machine tools
- Mobile plant machine



## Technical characteristics

Voltages	12VDC、24VDC、110VAC、220VAC
Unit of pump outlet	1
Outlet thread	G1/4
Output	Max. 15 ml/min ( one pump element )
Operating pressure	adjustable from $\pm 70$ to 150bar
Reservoir Capacity	2L、4L、6L、8L
Lubricants	OIL、000、00、0、1
Operating temperatures	-50 - 90°C

## Control System



### Basic function

- 1 Easy to read LED display
- 2 Legible on/off instructions
- 3 Reset function
- 4 Easy to use navigation keys
- 5 Alarm signal of lube system shutdown
- 6 Warning signal prior to lube system shutdown
- 7 Low level indication
- 10 Manually run/Confirm

### Custom function

- 8 Access to the control device is password protected
- 9 Pre-lube capability

★ For additional customization features, please contact your sales manager.

- Clear panel
- Programs that can be designed
- It can be password protected
- Sound alarm
- Low level alarm
- Accept proximity switch
- Excellent shock resistance
- pre lubrication button



## ULTRA FLOW SA

Unit 15 Montague Park  
24 Stella Road Montague Gardens  
Cape Town South Africa, 7441

Tel: +27215517497  
Email: sales@ultra-flow.com  
URL: www.ultraflowsa.com

### A2 AUTOLUBE:

The A2 controller is a universal lubrication system controller capable of handling all common lubrication systems.

Innovative Algorithms also give new flexibility and greater control over traditional single line systems.

The built in Real Time Clock allows the unit to log a history of operations and fault conditions.

Serial communications allows the operation / history and setup to be modified / altered via cell phone using Bluetooth. By using the GSM option called 'Roamer' all conditions can be monitored via the GSM module. The user has full remote control of the panel via a dedicated portal.

### AREAS OF USE:

Mining industries, Agriculture, Road Construction, Marine, Manufacturing industries, Beverage and food industries, Railways and Transport.



### A2 SPECIFICATIONS

VOLTAGE:	10 Vdc TO 30Vdc
CURRENT DRAIN:	15mA Max (no load) 10mA nominal
PUMP OUTPUT:	12A Continuous, 15A for 15 sec
LAMP OUTPUT:	5A Max
SWITCHING:	Solid State Circuit Protected
FUSE:	Electronic Fuse 60A
CONNECTOR:	14 Way Molex Minifit - JR
COMMUNICATIONS:	RS232
BLUETOOTH:	LE Connection > 20M
DIMENSIONS:	95mm X 78MM X 38mm
WEIGHT:	120g
IP RATING:	IP54
TEMP RANGE:	-30° C TO 60° C
ALTITUDE OF USE:	<2000M
POLLUTION DEGREE:	PDII
RoHS COMPLIANT:	Lead free PCB
DECAL:	Lexan Membrane Keypad
EMC REGISTRATION:	TRE03128/25
EU DECLARATION (CE):	W25/02/26
BLUETOOTH:	Registered Member
WET LOCATION USE:	Not Recommended

### A2 FEATURES

- Runs progressive, single line systems
- Real time clock logs dates and times of faults (6000) records
- RS232 serial port allows connection to GSM module
- Option to connect to GSM modem via GSM networks
- Bluetooth connection via A2 app available from IOS & Android
- Timing intervals from 5 seconds to 99 hours
- Cycle counting
- 10Vdc to 30Vdc operation
- Short/open circuit detection with audible warning
- External fault lamp drive with both flash or steady output
- Low level monitoring
- 2 Proximity inputs
- Inputs can accept all industry standards NPN/PNP
- Blockage Detection
- Visual and audible fault indication
- Built in E fuse
- OLED display
- Simple Lube Logic setup procedure
- Test mode allows for testing prior to commissioning
- Practical attractive housing with mounting bracket



## ULTRA FLOW SA

Unit 15 Montague Park  
24 Stella Road Montague Gardens  
Cape Town South Africa, 7441

Tel: +27215517497  
Email: sales@ultra-flow.com  
URL: www.ultraflowsa.com

### ROAMER:

The Roamer is an Industrial Internet of Things (IIOT) module which runs on any global mobile network. Designed for use specifically with the A2 Autolube, with a Roamer connected you can access all of your lubrication data - anywhere, anytime. The Roamer uses GSM technology to connect to any available mobile network to transfer data from the A2 Autolube to a user-friendly website. With the Roamer connected to an A2 Autolube you can:

- See the current status of your Lubrication System.
- View and Download History Logs for your Lubrication System.
- Change settings on your A2 Autolube remotely via the website.
- View system totals including lifetime, 24hr, 7 days and 30 days.
- Add installations and asset details to better track your Lubrication System.
- Upgrade your A2 Firmware to the latest firmware over the cloud either manually or automatically when available.

### AREAS OF USE:

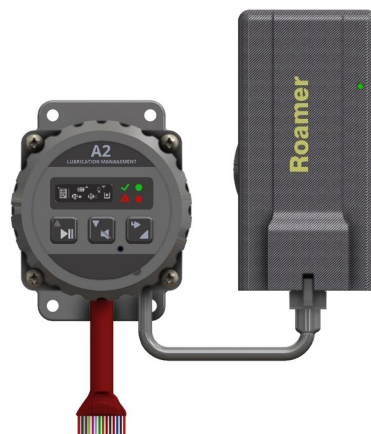
Mining industries, Agriculture, Road Construction, Marine, Manufacturing industries, Beverage and food industries, Railways and Transport.

### ROAMER SPECIFICATIONS

- VOLTAGE: 9 Vdc TO 33Vdc
- CONNECTOR: 4 way data port
- COMMUNICATIONS: RS232
- IOT MODULE: Uses GSM
- DIMENSIONS: 121mm X 60MM X 16mm
- WEIGHT: 70g
- IP RATING: IP54
- TEMP RANGE: -30° C TO 60° C
- ALTITUDE OF USE: <2000M
- POLLUTION DEGREE: PDII
- RoHS COMPLIANT: Lead free PCD
- EMC REGISTRATION: TRE03128/25
- EU DECLARATION (CE): W25/02/26
- BLUETOOTH: Registered Member
- WET LOCATION USE: Not Recommended

### ROAMER FEATURES

- See current status of lubrication system.
- View and download history logs for your lube system
- Change settings remotely anywhere anytime via website
- View system totals including lifetime, 24Hrs, 7 days and 30 days
- Add installations and asset details to track your lubrication system
- Upgrade your A2 firmware to the latest over the cloud
- Practical attractive housing with mounting bracket



A2 Autolubes			
DEVICE	ROAMER #	SITE	LAST STATUS
#01039 A2 Jack	#00101	F&O Office	✓ Faults cleared 02/08/2024 10:52
#00016 Pierre Testbox	#00775	35 Zander Estate	⚡ Power on 02/08/2024 10:50

A2 Autolube

<



## ULTRA FLOW SA

Unit 15 Montague Park  
24 Stella Road Montague Gardens  
Cape Town South Africa, 7441

Tel: +27215517497  
Email: sales@ultra-flow.com  
URL: www.ultraflowsa.com

### AUTOLUBE:

The Autolube controller is a universal lubrication system controller capable of handling all common lubrication systems.

Innovative Algorithms also give new flexibility and greater control over traditional single line systems.

The built in Real Time Clock allows the unit to log a history of operations and fault conditions.

Serial communications allows the operation / history and setup to be modified / altered via THE ADS-2 Data Shuttle. Up to 100 uploads / machines can be recorded.

### AREAS OF USE:

Mining industries, Agriculture, Road Construction, Marine, Manufacturing industries, Beverage and food industries, Railways and Transport.



### AUTOLUBE SPECIFICATIONS

- VOLTAGE: 10 Vdc TO 30Vdc
- CURRENT DRAIN: 300mA Max (no load)
- PUMP OUTPUT: 7A RMS. Max
- LAMP OUTPUT: 3A Max
- SWITCHING: Solid State Circuit Protected
- FUSE: 8A Fast Blow
- CONNECTOR: 14 Way Molex Minifit - JR
- COMMUNICATIONS: RS232
- DIMENSIONS: 70mm X 145MM X 38mm
- WEIGHT: 300g
- IP RATING: IP54
- TEMP RANGE: -30° C TO 60° C
- ALTITUDE OF USE: <2000M
- POLLUTION DEGREE: PDII
- RoHS COMPLIANT: Lead free PCB
- DECAL: Lexan Membrane Keypad
- WET LOCATION USE: Not Recommended

### AUTOLUBE FEATURES

- Runs progressive, single line systems and Dual Line Systems
- Real time clock logs dates and times of faults (80) records
- RS232 serial port allows connection to ADS-2 Data Shuttle
- Timing intervals from 5 seconds to 24 hours
- Cycle counting
- 10Vdc to 30Vdc operation
- Short/open circuit detection with audible warning
- External fault lamp drive with both flash or steady output
- Low level monitoring
- 2 Proximity inputs
- Inputs can accept all industry standards NPN/PNP
- Visual and audible fault indication
- LED display
- Non volatile memory
- Blown fuse Indicator
- Reservoir level monitoring
- Simple Lube Logic setup procedure
- Test mode allows for testing prior to commissioning
- Practical attractive housing with mounting bracket



## ULTRA FLOW SA

Unit 15 Montague Park  
24 Stella Road Montague Gardens  
Cape Town South Africa, 7441

Tel: +27215517497  
Email: sales@ultra-flow.com  
URL: www.ultraflowsa.com

### ADS-3 DATA SHUTTLE:

The ADS-3 is a compact Data Module for collecting log files from Autolube controllers on site for later download to a PC for analysis. Up to 256 files are stored by serial number on a first in first out basis.

Pass through mode allows connection between both PC and autolube to Data Shuttle simultaneously to communicate directly with the autolube and to enable LIVE mode.

The Setup button is used to enter and exit Setup Mode without the need to power-cycle the Autolube controller.

The unit is powered via the USB or Autolube connections.

### AREAS OF USE:

Mining industries, Agriculture, Road Construction, Marine, Manufacturing industries, Beverage and food industries, Railways and Transport.



### ADS-3 SPECIFICATIONS

VOLTAGE:	10 Vdc TO 30Vdc
CONNECTOR:	4 way data port
COMMUNICATIONS:	RS232
DIMENSIONS:	114mm X 36MM X 26mm
WEIGHT:	50g
IP RATING:	IP54
TEMP RANGE:	-30° C TO 60° C
ALTITUDE OF USE:	<2000M
POLLUTION DEGREE:	PDII
ROHS COMPLIANT:	Lead free PCB
DECAL:	Lexan Membrane Keypad
EU DECLARATION (CE):	W25/02/26
WET LOCATION USE:	Not Recommended

### ADS-3 FEATURES

- Stores up to 256 files
- Setup mode button
- Setup mode lock and unlock buttons
- Dual colour LED for status feedback
- Micro USB
- Powered via Autolube or USB

7. Select a range of entries to see a summary in the blue summary bar.

Fig 7.

⚠	22-Apr-19	9:47 PM	2% (~0 h 0 m)	P1
▶/	22-Apr-19	9:47 PM	100% (~0 h 0 m)	
⚠	22-Apr-19	8:56 PM	100% (~0 h 51 m)	P1
▶/	22-Apr-19	8:56 PM	100% (~0 h 0 m)	
⚠	22-Apr-19	8:43 PM	100% (~0 h 12 m)	P1
SELECTION : 22 Apr 2019 20:56 to 22 Apr 2019 21:47 (0 h 51 m)				
POWER ON : 0 h 51 m				
FAULT : 0 h 51 m				





## ULTRA FLOW SA

Unit 15 Montague Park  
24 Stella Road Montague Gardens  
Cape Town South Africa, 7441

Tel: +27215517497  
Email: sales@ultra-flow.com  
URL: www.ultraflowsa.com

### G2 PULSE:

The G2 PULSE controller is specifically designed to use on hydraulic driven systems incorporating a pump as well as a solenoid valve and pressure switch. The controller can be programmed for a pause cycle of 1 sec to 50 hours. Pump run pressure timeout range of 1 to 50 minutes. The solenoid cycle times of 1 second to 50 seconds. The built in Real Time Clock allows the unit to log a history of operations and fault conditions.

### AREAS OF USE:

Mining industries, Agriculture, Road Construction, Marine, Manufacturing industries, Beverage and food industries, Railways and Transport.



### G2 PULSE SPECIFICATIONS

- VOLTAGE: 10 Vdc TO 30Vdc
- CURRENT DRAIN: 80mA Max (no load)
- PUMP OUTPUT: 7A RMS. Max (Inductive load)
- LAMP OUTPUT: 4A Max (resistive load only)
- SWITCHING: 25A automotive relays
- FUSE: 8A Fast Blow
- CONNECTOR: 12 Way Molex Minifit - JR
- DIMENSIONS: 62mm X 94MM X 38mm
- WEIGHT: 150g
- IP RATING: IP54
- TEMP RANGE: -30° C TO 60° C
- ALTITUDE OF USE: <2000M
- POLLUTION DEGREE: PDII
- RoHS COMPLIANT: Lead free PCB
- DECAL: Lexan Membrane Keypad
- WET LOCATION USE: Not Recommended
- VIBRATION: 0G, 10 to 55Hz 1.5mm double amplitude

### G2 PULSE FEATURES

- Runs progressive line systems using hydraulic pumps
- Real time clock logs dates and times of faults (80) records
- Timing intervals from 1 second to 50 hours
- Cycle counting
- Simple programming (No jumpers or esoteric indicators)
- Short/open circuit detection with audible warning
- External fault lamp drive with both flash or steady output
- Low level monitoring
- Visual and audible fault indication
- Simple connection (pre-made looms available on request)W
- Non volatile memory
- Reservoir level monitoring
- Simple Lube Logic setup procedure
- Test mode allows for testing prior to commissioning
- Practical attractive housing with mounting bracket





## ULTRA FLOW SA

Unit 15 Montague Park  
24 Stella Road Montague Gardens  
Cape Town South Africa, 7441

Tel: +27215517497  
Email: sales@ultra-flow.com  
URL: www.ultraflowsa.com

### G1 CONTROLLER:

The G1 controller is a universal lubrication system controller capable of handling all common lubrication systems pertaining to progressive systems.

Innovative Algorithms also give new flexibility and greater control over traditional single line systems.

The built in Real Time Clock allows the unit to log a history of operations and fault conditions.

### AREAS OF USE:

Mining industries, Agriculture, Road Construction, Marine, Manufacturing industries, Beverage and food industries, Railways and Transport.



### G1 SPECIFICATIONS

- VOLTAGE: 10 Vdc TO 30Vdc
- CURRENT DRAIN: 80mA Max (no load)
- PUMP OUTPUT: 7A RMS. Max
- LAMP OUTPUT: 4A Max
- SWITCHING: 25A automotive relay
- FUSE: 8A Fast Blow
- CONNECTOR: 10 Way Molex Minifit - JR
- DIMENSIONS: 62mm X 94MM X 38mm
- WEIGHT: 150g
- IP RATING: IP54
- TEMP RANGE: -30° C TO 60° C
- VIBRATION: 10G, 10 to 55Hz
- ALTITUDE OF USE: <2000M
- POLLUTION DEGREE: PDII
- RoHS COMPLIANT: Lead free PCB
- DECAL: Lexan Membrane Keypad
- WET LOCATION USE: Not Recommended

### G1 FEATURES

- Runs progressive,
- Real time clock
- Timing intervals from 1 seconds to 50 hours
- Cycle counting
- External fault lamp drive with both flash or steady output
- Low level monitoring
- Visual and audible fault indication
- Non volatile memory
- Simple Lube Logic setup procedure
- Test mode allows for testing prior to commissioning
- Practical attractive housing with mounting bracket

## Controllers & wiring harness

### SPECIFICATIONS

Voltage: 10V to 30V DC  
 Current Drain: 300 ma Max (no load)  
 Pump Output: 7 A rms. Max  
 Lamp Output: 3 A Max  
 Switching: Solid-state short circuit protected  
 FUSE: 8 Amp fast blow  
 Connector: 14 way Molex Minifit-JR  
 Communications: RS232  
 Dimensions: 72 mm X 142 mm X 38 mm (including mounting bracket)  
 Weight: 300 g Protection IP54

The AUTOLUBE is a universal lubrication system controller capable of handling all common lubrication systems from the simplest run - pause timer through progressive, single and dual line systems. Innovative algorithms also give new flexibility and greater control over traditional single and dual line systems.

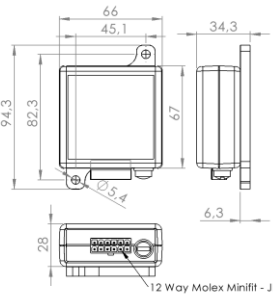


Item Code / UF Code	REFERENCE TO PART	Description	Dim Ref 1	Dim Ref 2	Manufacture	Minimum Qty Req	Pressure	Price Rands	US Dollar Price
<b>AUTOLUBE CONTROLLER PROGRESSIVE/DUAL/SINGLE LINE</b>	<b>Alternative Part Number</b>	<b>AUTOLUBE LUBRICATION CONTROLLER</b>	<b>DIMENSION</b>	<b>DIMENSION</b>					
UF-A2-24	85307	AUTOLUBE LUBRICATION CONTROLLER			YES	10			

### SPECIFICATIONS

Voltage: 10V to 30V DC  
 Current Drain: 80 ma Max (no load)  
 Pump Output: 7 A rms. Max (inductive load only)  
 Lamp Output: 4 A Max (resistive load only)  
 Switching: 25 A automotive relays with spark suppression  
 Dimensions: 66 mm X 94 mm X 35 mm  
 Weight: 150 g  
 Vibration: 10 G, 10 to 55 Hz 1.5 mm double amplitude  
 Fuse: 8 Amp fast blow  
 Connector: Molex Minifit-JR 10 pin 8 Amp contact rating

The G2 Pulse Lubrication Controller is specifically designed for use on systems incorporating a pump as well as a solenoid valve and pressure switch. The unit can be programmed for pause cycles from 1 second to 50 hours, pump run pressure timeout range of 1 to 50 minutes and solenoid valve cycle times of 1 to 50 seconds.

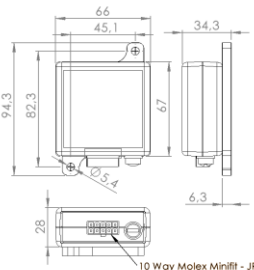


Item Code / UF Code	REFERENCE TO PART	Description	Dim Ref 1	Dim Ref 2	Manufacture	Minimum Qty Req	Pressure	Price Rands	US Dollar Price
<b>G2 PULSE CONTROLLER FOR HYDRAULIC APPLICATIONS</b>	<b>Alternative Part Number</b>	<b>G2 PULSE CONTROLLER</b>	<b>DIMENSION</b>	<b>DIMENSION</b>					
UF-G2-24	NA	G2 PULSE CONTROLLER			YES	10			

### SPECIFICATIONS

Voltage: 10V to 30V DC  
 Current Drain: 80 ma Max (no load)  
 Pump Output: 7 A rms. Max (inductive load only)  
 Lamp Output: 4 A Max (resistive load only)  
 Switching: 25 A automotive relays with spark suppression  
 Dimensions: 66 mm X 94 mm X 35 mm  
 Weight: 150 g  
 Vibration: 10 G, 10 to 55 Hz 1.5 mm double amplitude  
 Fuse: 8 Amp fast blow  
 Connector: Molex Minifit-JR 10 pin 8 Amp contact rating

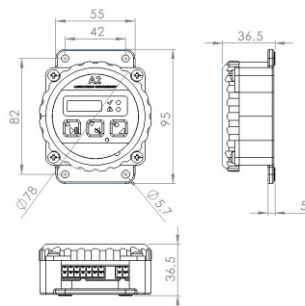
The G1 Lubrication controller from ULTRA-FLOW is the result of years of experience in the lubrication industry. Designed by lubrication experts the system gives users the functionality they require without the complications. From the practical housing and wiring to the simple clear programming, the G1 sets a new world standard in the lubrication industry. The G1 is capable of handling all common lubrication systems from the simplest run - pause timer through progressive lines systems.



Item Code / UF Code	REFERENCE TO PART	Description	Dim Ref 1	Dim Ref 2	Manufacture	Minimum Qty Req	Pressure	Price List	UFES
<b>G1 LUBRICATION CONTROLLER PROGRESSIVE/SINGLE LINE</b>	<b>Alternative Part Number</b>	<b>G1 LUBRICATION CONTROLLER</b>	<b>DIMENSION</b>	<b>DIMENSION</b>					
UF-G1-24	NA	G1 LUBRICATION CONTROLLER			YES	10			

### SPECIFICATIONS

VOLTAGE: 10.5Vdc to 30Vdc  
 CURRENT DRAIN: 15mA Max (No Load) 10mA Nominal  
 PUMP OUTPUT: 12A Continuous, 15A for 15 Sec, 20A for 6 Sec  
 HIGH CURRENT OUTPUT: 50A Continuous  
 LAMP OUTPUT: 5A Max  
 SWITCHING: Solid State Short Circuit Protection  
 FUSE: Electronic Fuse (80A)  
 CONNECTION: 14 Way Molex Minifit - JR  
 COMMUNICATIONS: RS232  
 BLUE TOOTH: LE Connection (Low Energy Interface)  
 RANGE: > 20M  
 ROAMER: RS232 Out GSM Module  
 COMPLIANCE: RoHS Directive 2002/95/EC (Lead Free)  
 DIMENSIONS: 95mm X 78mm X 38mm (including mounting bracket)  
 WEIGHT: 120g  
 PROTECTION: IP54  
 TEMPERATURE RANGE: -30° C to 60° C



Item Code / UF Code	REFERENCE TO PART	Description	Dim Ref 1	Dim Ref 2	Manufacture	Minimum Qty Req	Pressure	Price Rands	US Dollar Price
<b>A2 CONTROLLER 10VDC TO 30VDC</b>	<b>Alternative Part Number</b>	<b>A2 LUBRICATION CONTROLLER</b>	<b>DIMENSION</b>	<b>DIMENSION</b>					
UF-A2-24	NA	A2 LUBRICATION CONTROLLER			YES	10			

## Data Shuttle & Wiring harness

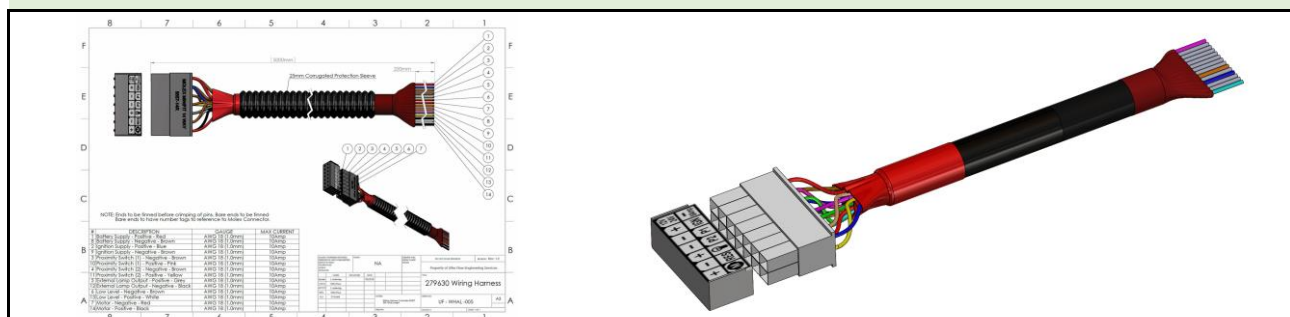
### SPECIFICATIONS

Storage for 256 files  
Setup Mode button  
Setup Mode Lock and Unlock buttons  
Dual colour LED for status feedback  
Micro USB Powered via Autolube or USB

The ADS-3 is a compact Data Module for collecting log files from Autolube controllers on site for later download to a PC for analysis. Up to 256 files are stored by serial number on a first in first out basis.

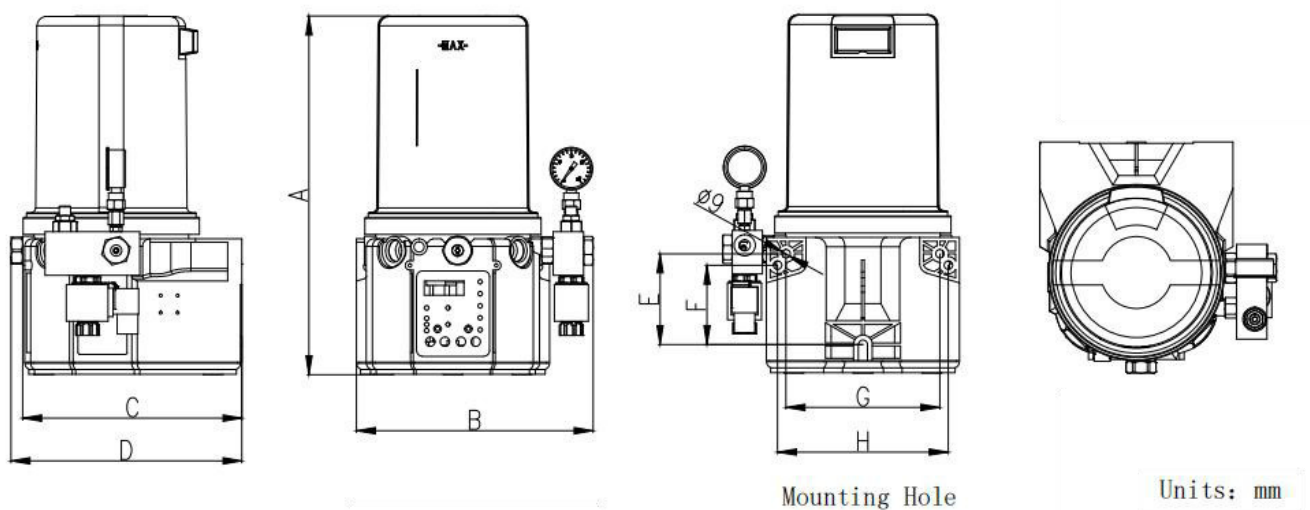


Item Code / UF Code	REFERENCE TO PART	Description	Dim Ref 1	Dim Ref 2	Manufacture	Minimum Qty Req			
DATA SHUTTLE	Alternative Part Number	DATA SHUTTLE FOR AUTOLUBE RECORDS AND EVENTS	DIMENSION	DIMENSION					
ADS-3	85307-DS	DATA SHUTTLE FOR AUTOLUBE CONTROLLER			YES				

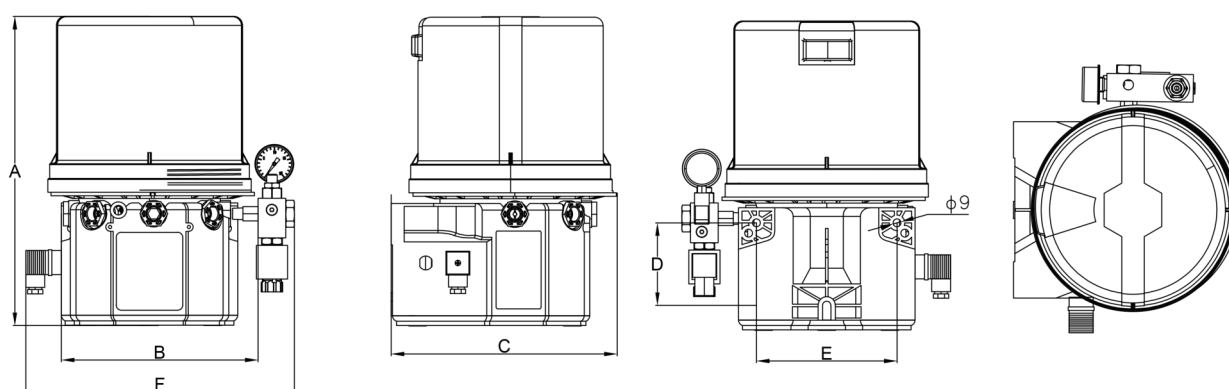


Item Code / UF Code	REFERENCE TO PART	Description	Dim Ref 1	Dim Ref 2	Manufacture				
AUTOLUBE, G1, AND G2 PULSE HARNESS		CONTROLLER LOOMS (HARNESS)	WIRE GAUGE	CONNECTOR					
UF-AL-5M-14WAY	279630	AUTOLUBE CONTROLLER LOOM 5M	AWG18	MOLEX MINIFIT 14	YES				
UF-AL-8M-14WAY	NA	AUTOLUBE CONTROLLER LOOM 8M	AWG18	MOLEX MINIFIT 14	YES				
UF-AL-10M-14WAY	NA	AUTOLUBE CONTROLLER LOOM 10M	AWG18	MOLEX MINIFIT 14	YES				
UF-AL1-5M-14WAY	NA	AUTOLUBE CONTROLLER LOOM 15M	AWG18	MOLEX MINIFIT 14	YES				
UF-G1-5M-10WAY	NA	G1 CONTROLLER LOOM 5M	AWG18	MOLEX MINIFIT 10	YES				
UF-G1-8M-10WAY	NA	G1 CONTROLLER LOOM 8M	AWG18	MOLEX MINIFIT 10	YES				
UF-G1-10M-10WAY	NA	G1 CONTROLLER LOOM 10M	AWG18	MOLEX MINIFIT 10	YES				
UF-G1-15M-10WAY	NA	G1 CONTROLLER LOOM 15M	AWG18	MOLEX MINIFIT 10	YES				
UF-G2-5M-12WAY	NA	G2 PULSE CONTROLLER LOOM 5M	AWG18	MOLEX MINIFIT 12	YES				
UF-G2-8M-12WAY	NA	G2 PULSE CONTROLLER LOOM 8M	AWG18	MOLEX MINIFIT 12	YES				
UF-G2-10M-12WAY	NA	G2 PULSE CONTROLLER LOOM 10M	AWG18	MOLEX MINIFIT 12	YES				
UF-G2-15M-12WAY	NA	G2 PULSE CONTROLLER LOOM 15M	AWG18	MOLEX MINIFIT 12	YES				

## Dimensions

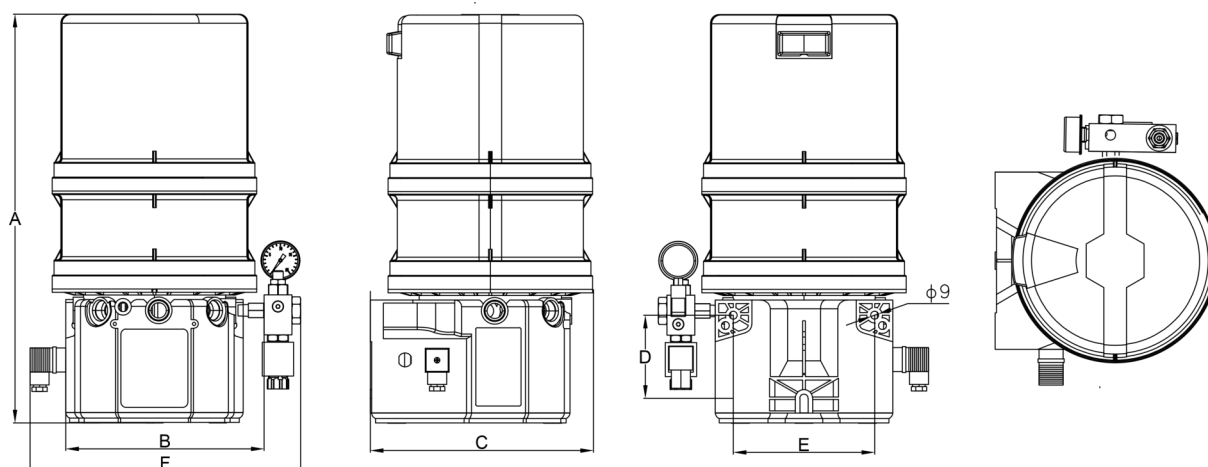


Reservoirs	A	B	C	D	E	F	G	H
2L	338	255	231.5	248	95.5	83.5	162.5	180
4L	378	255	231.5	248	95.5	83.5	162.5	180



Reservoirs	A	B	C	D	E	F
6L	375.5	243	261.2	95.5	162.5	311

## Dimensions



Reservoirs	A	B	C	D	E	F
8L	470	243	261.2	95.5	162.5	311

## Top cap

1. Order the GT pump for the upper grease cover. Please add - B after the standard part number. For example: 20D220-B

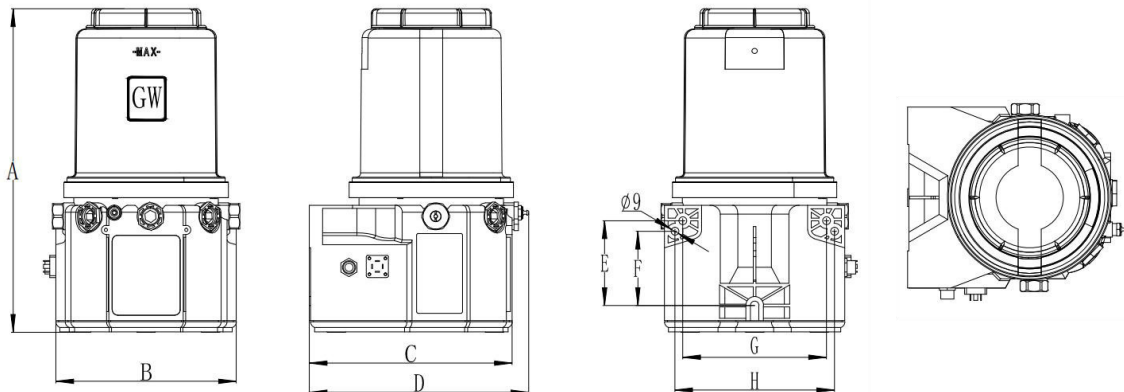


Pump grease, top open cover mode, large diameter injection cap

Applicable: 2L、6L、8L

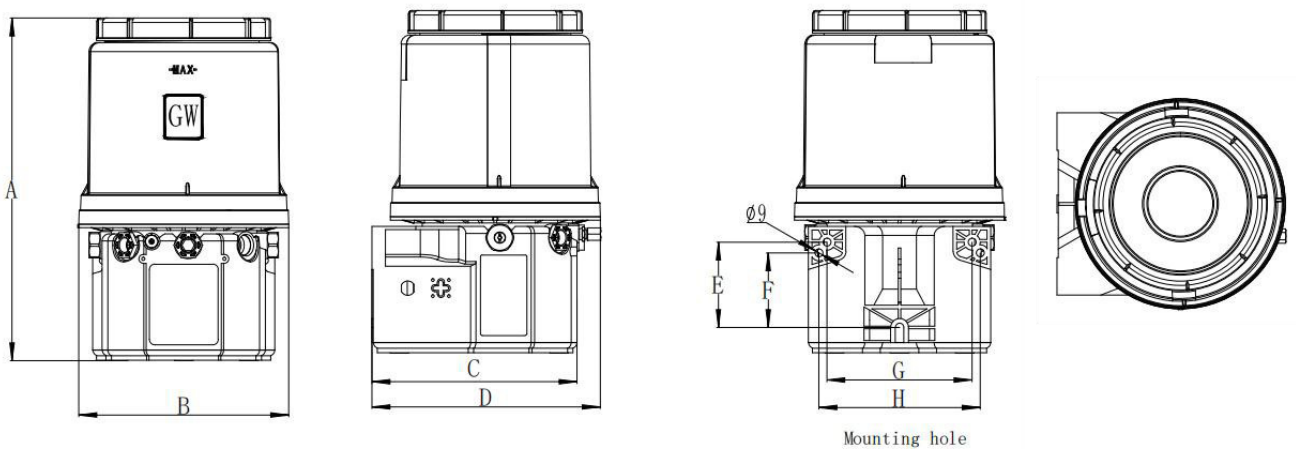
This top cover method is not suitable for 4L tanks

## 2L Dimensions (mm)



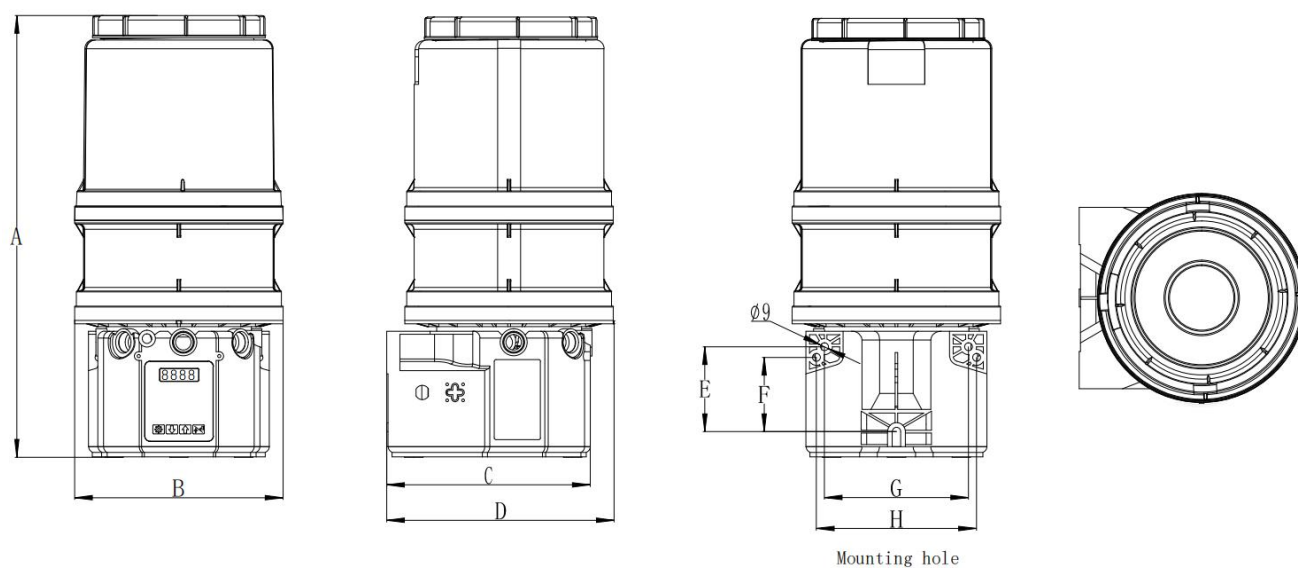
Reservoir	A	B	C	D	E	F	G	H
2L	365	204	231.5	248	95.5	83.5	162.5	180

## 6L & 8L Dimensions (mm)



Reservoir	A	B	C	D	E	F	G	H
6L	385	235	231.5	255.5	95.5	83.5	162.5	180



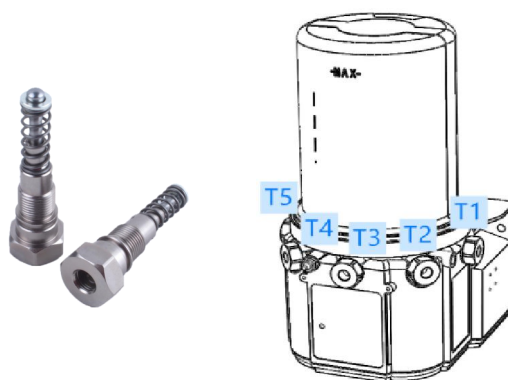


Reservoir	A	B	C	D	E	F	G	H
8L	498	235	231.5	255.5	95.5	83.5	162.5	180

#### Ordering information:

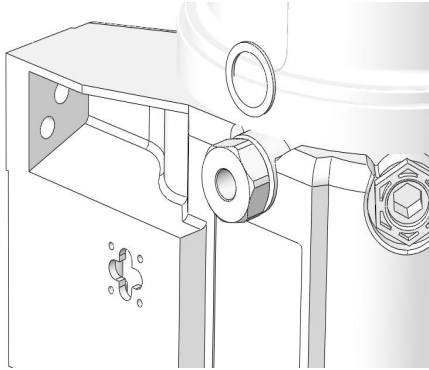
2. Every GT pump is equipped with a pump element at the T1 position. Customers can purchase pump element and install them in positions T2 through T5

Only suitable for A6, if you choose other pump head, please consult customer service.



3. Displacement can be adjusted by shims. Pump displacement settings can use 0, 1 or 2 spacers.

Note: Max of 2 spacers can be used

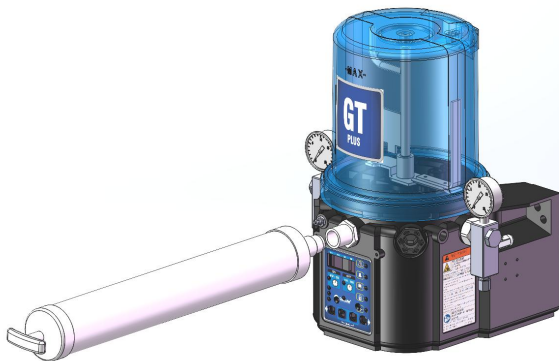


Ordering code: UF-80535

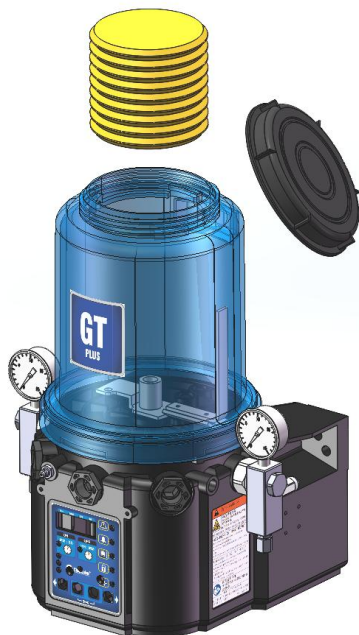
No. Spacers	Output Volume/Minute	
	cubic inches	cubic cm
2	0.12	2
1	0.18	3
0	0.25	4

## Fill grease type

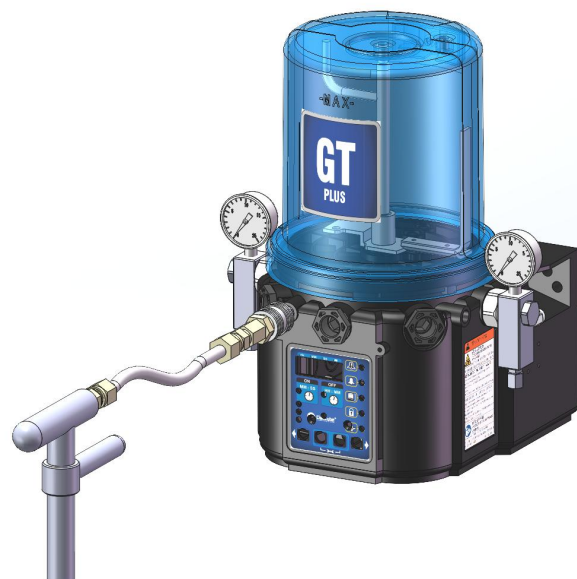
### ① With grease gun kits



### ② With cartridge



### ③ With hand pump



## Ordering information



21-

--	--	--	--	--	--	--	--

<p><b>Type</b></p> <p>D = Stirrer</p> <p>E = With follower plate</p>
<p><b>Reservoir</b></p> <p>2 = 2L      4 = 4L</p> <p>6 = 6L      8 = 8L</p>
<p><b>Voltages</b></p> <p>2= 12VDC    4= 24VDC</p> <p>6= 220V</p>
<p><b>Timer</b></p> <p>1 = With timer</p> <p>6 = Without timer</p>
<p><b>Low Level</b></p> <p>L = With level</p> <p>M = Without level</p>
<p><b>Lubricant</b></p> <p>G = Grease</p> <p>O = Oil</p>
<p><b>Fill Type</b></p> <p>N = Grease Nipples</p> <p>F = Quick connection</p>
<p><b>Reservoir Feature</b></p> <p>A = Without top cover</p> <p>B = With top cover</p>


# Ultra Flow SA



## VL-1 Series Injector Valves

- Shipped with manifolds from 1 to 6
- Ports (lubrication points)
- Metering quantity
- 0.131 - 1.31 cc /cyc adjustable



## For use in single-line lubrication systems

The series VL-1 Injector valves are for single-line, high-pressure centralized lubrication systems dispensing lubricants compatible with fluoroelastomer packings and viscosity up to NLGI 2. Output is externally adjustable. An indicator pin permits visual check of metering device operation. Individual metering devices can be removed easily for inspection or replacement.

## Characteristics

- Shipped with manifolds from 1 to 6 ports (lubrication points)
- Output is externally adjustable
- Each indicator pin permits visual check of injector operation
- Individual metering devices can be removed easily for inspection or replacement

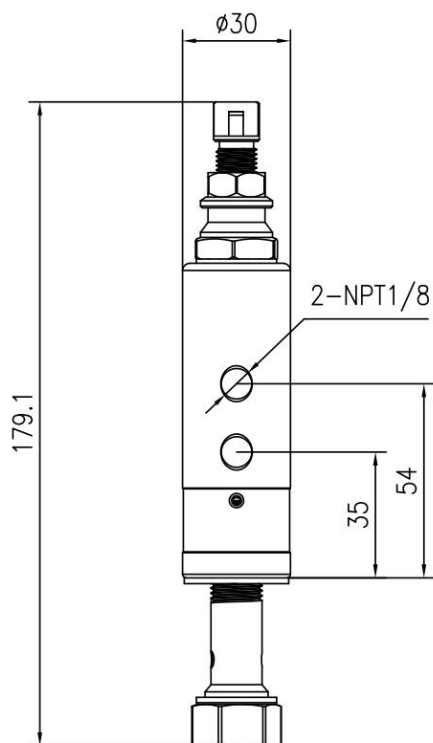
## Applications

- Mining and mineral processing
- Construction machinery, steel/heavy industry

Technical characteristics	
Outlets	1 to 6
Metering quantity	0.131 - 1.31CC (adjustable)
Lubricant	Grease NLGI 0, 1, 2
Operating temperature	-26 to +176 °C
Operating pressure	128 to 241 bar
Material	Carbon steel
Connection main line	3/8 NPT (F)
Connection outlet	1/8 NPT (F)

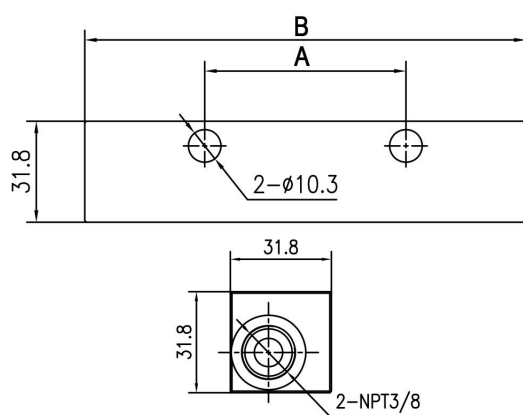


## Ordering information of single injector



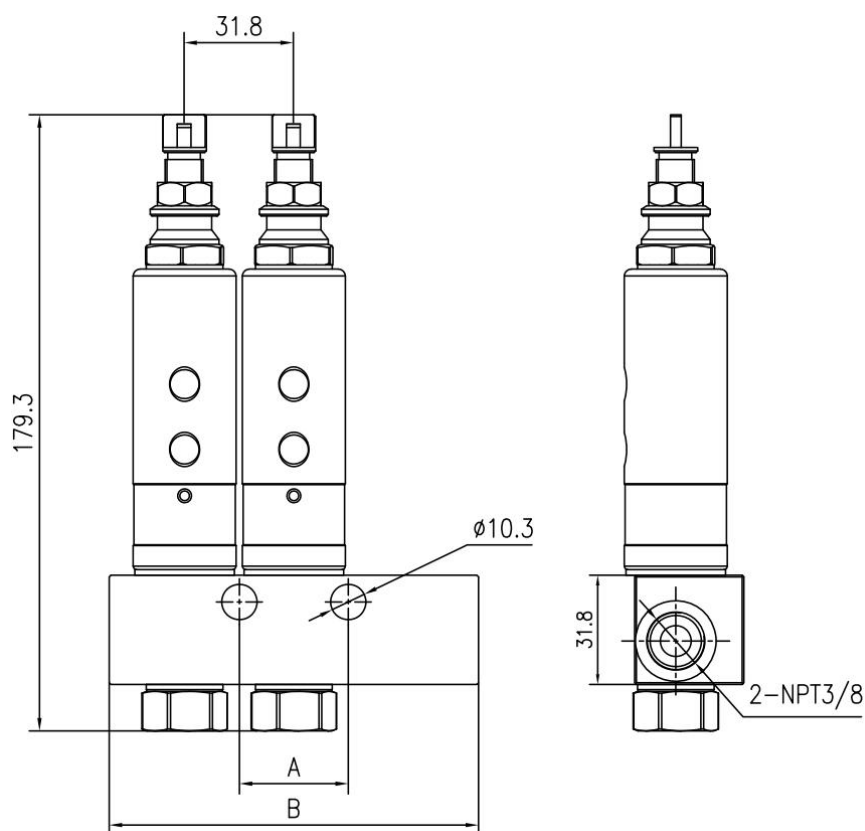
Part number	Connection outlet
UF-VL1000	1/8 NPT (F)

## Manifold block



Part number	Output Number	A/mm	B/mm
UF-DBVL01	1	-	63
UF-DBVL02	2	-	76.4
UF-DBVL03	3	31.7	107.5
UF-DBVL04	4	63.4	139
UF-DBVL05	5	95.1	170.5
UF-DBVL06	6	126.8	202.7

## Ordering information of complete set



Part number	Output Number	A/mm	B/mm	Inlet	Outlet
UF-VL110602	1	-	63	3/8 NPT (F)	1/8 NPT (F)
UF-VL120602	2	-	76.4		
UF-VL130602	3	31.7	107.5		
UF-VL140602	4	63.4	139		
UF-VL150602	5	95.1	170.5		
UF-VL160602	6	126.8	202.7		

# Ultra Flow SA



## VL-1X Series Metering Valves

- Shipped with manifolds from 1 to 6
- Ports (lubrication points)
- Metering quantity
- 0.25 - 1.31 cc/cyc adjustable

## For use in single-line lubrication systems

The series VL-1X Injector devices are for single-line, high-pressure centralized lubrication systems dispensing lubricants compatible with flouroelastomer packings. Viscosity up to NLGI 2. Output is externally adjustable. An indicator pin permits its visual check of metering device operation. Individual metering devices can be removed easily for inspection or replacement.

## Characteristics

- Shipped with manifolds from 1 to 6 ports (lubrication points)
- Output is externally adjustable
- Each indicator pin permits visual check of injector operation
- Individual metering devices can be removed easily for inspection or replacement

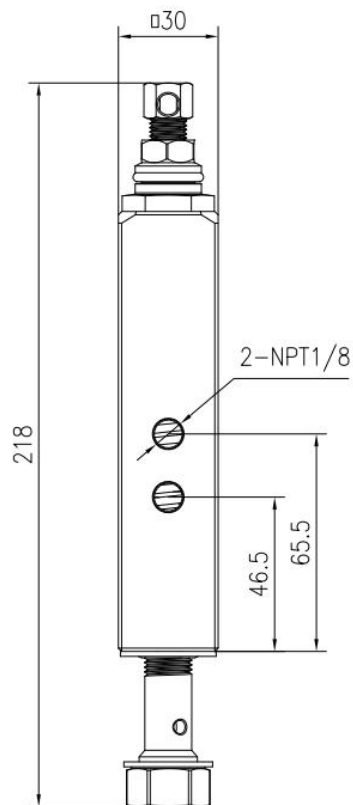
## Applications

- Construction machinery
- Mining and mineral processing
- Steel industry



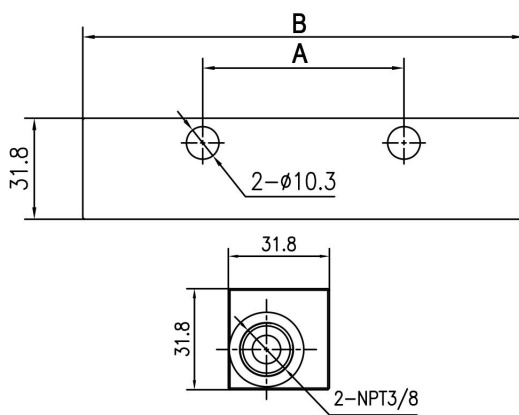
Technical characteristics	
Outlets	1 to 6
Metering quantity	0.25 - 1.31CC (adjustable)
Lubricant	Grease NLGI 0, 1, 2
Operating temperature	Max. 82 °C
Operating pressure	128 to 241 bar
Material	Carbon steel
Connection main line	3/8 NPT (F)
Connection outlet	1/8 NPT (F)

## Ordering information of single Injector valve



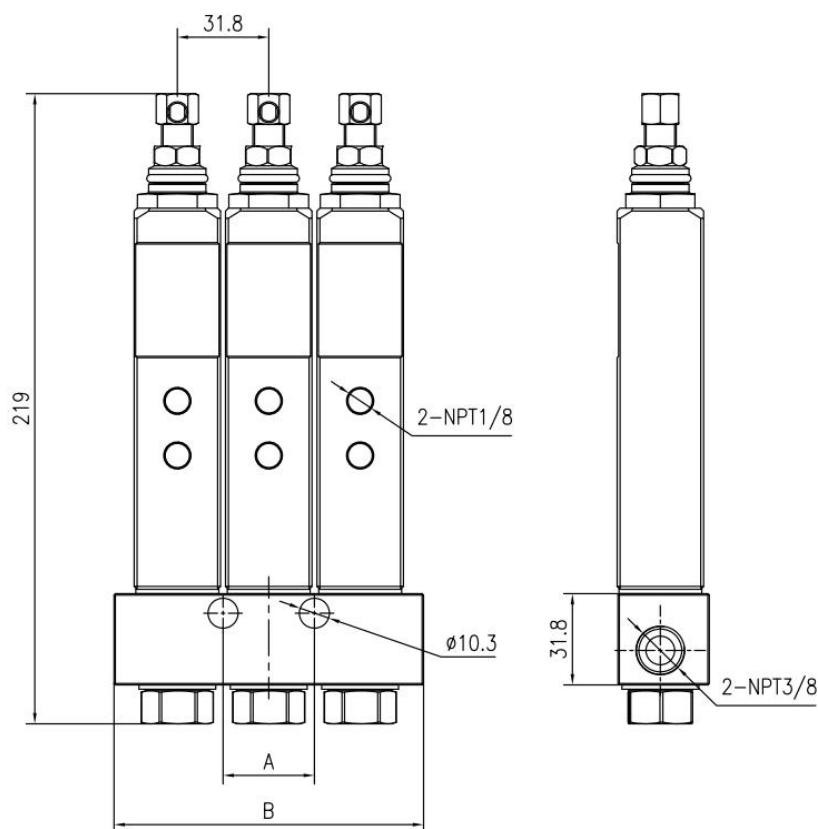
Part number	Connection outlet
UF-VL1X00	1/8 NPT (F)

## Manifold block



Part number	Output Number	A/mm	B/mm
UF-DBVL01	1	-	63
UF-DBVL02	2	-	76.4
UF-DBVL03	3	31.7	107.5
UF-DBVL04	4	63.4	139
UF-DBVL05	5	95.1	170.5
UF-DBVL06	6	126.8	202.7

## Ordering information of complete set



Part number	Output Number	A/mm	B/mm	Inlet	Outlet
UF-VL1X01	1	-	63	3/8 NPT (F)	1/8 NPT (F)
UF-VL1X02	2	-	76.4		
UF-VL1X03	3	31.7	107.5		
UF-VL1X04	4	63.4	139		
UF-VL1X05	5	95.1	170.5		
UF-VL1X06	6	126.8	202.7		



# Ultra Flow SA



## VL-1XL Series Injector Valves

- Shipped with manifolds from 1 to 6
- Ports (lubrication points)
- Metering quantity
- 0.57 - 5.00 cc/cyc adjustable

## For use in single-line lubrication systems

The series VL-1XL Injector devices are for single-line, high-pressure centralized lubrication systems dispensing lubricants compatible with fluoroelastomer packings and viscosity up to NLGI 2. Output is externally adjustable. An indicator pin permits visual check of metering device operation. Individual metering devices can be removed easily for inspection or replacement

## Characteristics

- Shipped with manifolds from 1 to 6 ports (lubrication points)
- Output is externally adjustable
- Each indicator pin permits visual check of injector operation
- Individual metering devices can be removed easily for inspection or replacement

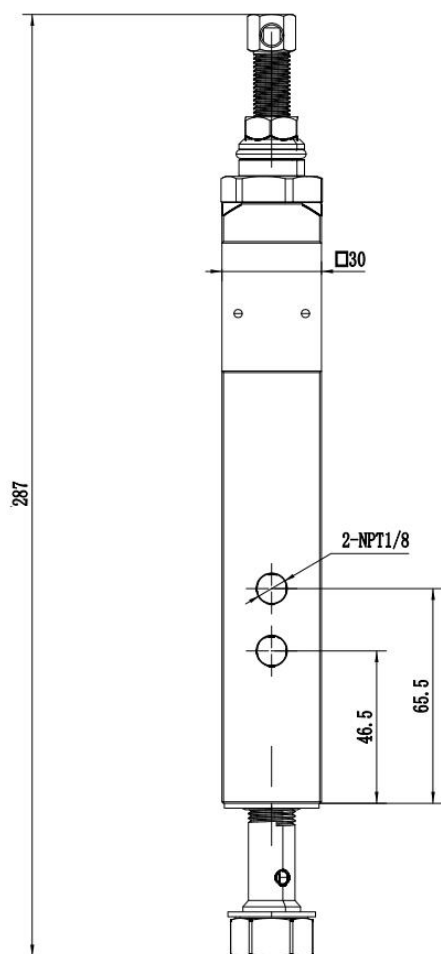
## Applications

- Construction machinery
- Mining and mineral processing
- Steel industry



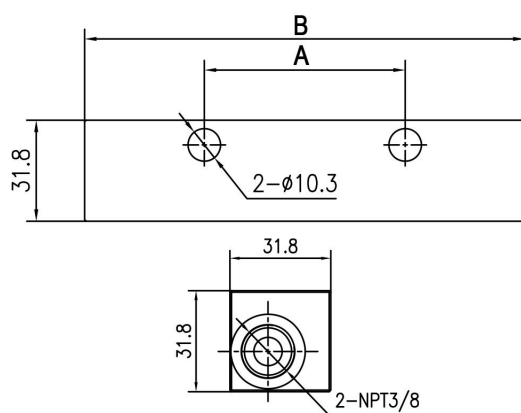
Technical characteristics	
Outlets	1 to 6
Metering quantity	0.57 - 5 CC (adjustable)
Lubricant	Grease NLGI 0, 1, 2
Operating temperature	Max. 82 °C
Operating pressure	128 to 414 bar
Material	Carbon steel
Connection main line	3/8 NPT (F)
Connection outlet	1/8 NPT (F)

## Ordering information of single Injector valve



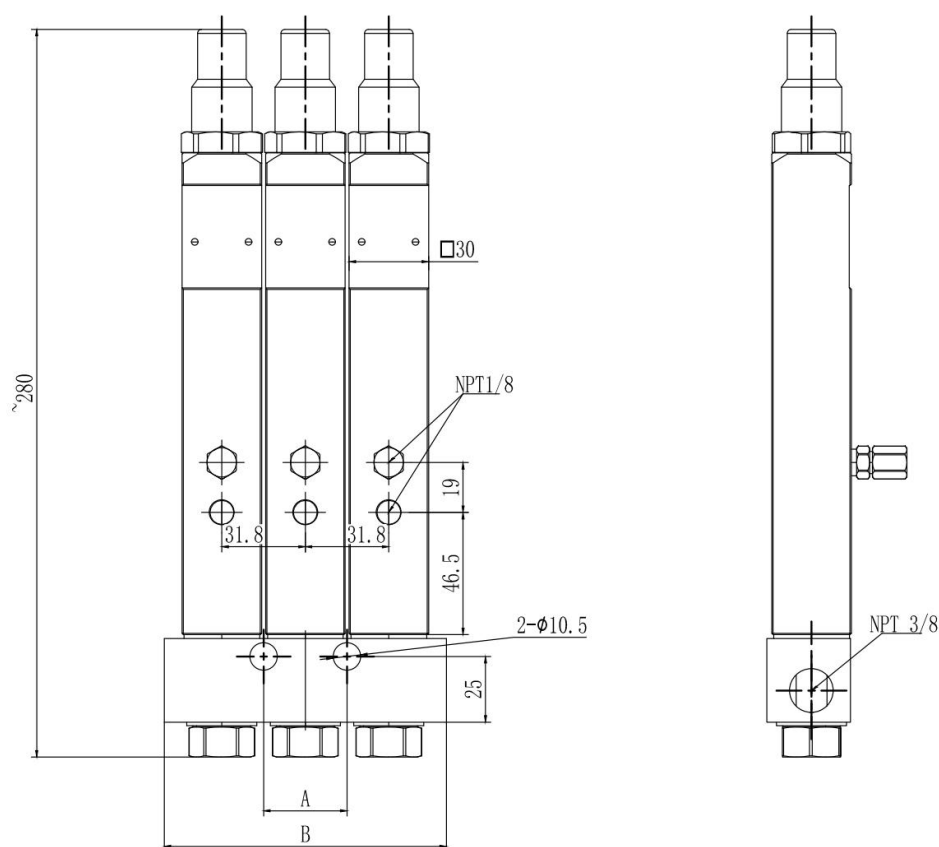
Part number	Connection outlet
UF-1XL000	1/8 NPT (F)

## Manifold block



Part number	Output Number	A/mm	B/mm
UF-DBVL01	1	-	63
UF-DBVL02	2	-	76.4
UF-DBVL03	3	31.7	107.5
UF-DBVL04	4	63.4	139
UF-DBVL05	5	95.1	170.5
UF-DBVL06	6	126.8	202.7

## Ordering information of complete set



Part number	Output Number	A/mm	B/mm	Inlet	Outlet
UF-1XL01T	1	-	63	3/8 NPT (F)	1/8 NPT (F)
UF-1XL02T	2	-	76.4		
UF-1XL03T	3	31.7	107.5		
UF-1XL04T	4	63.4	139		
UF-1XL05T	5	95.1	170.5		
UF-1XL06T	6	126.8	202.7		



# Ultra Flow SA



## VL-11 Series Injector Valves

- Individual metering devices can be
- Removed easily for inspection
- Metering quantity
- 0.82 - 8.20 cc/cyc adjustable

## For use in single-line lubrication systems

The series VL-11 Injector devices are for single-line, high-pressure lubrication systems. Viscosity up to NLGI 2. Output is externally adjustable. An indicator pin permits visual check of metering device operation. Individual metering devices can be removed easily for inspection or replacement.

## Characteristics

- May be combined in a circuit with Injector Valves, VL-1, VL-1X, VL-1XL and VL-11, VL-32
- Output is externally adjustable
- Each indicator pin permits visual check of injector operation
- Individual Injector Valves can be removed easily for inspection or replacement

## Applications

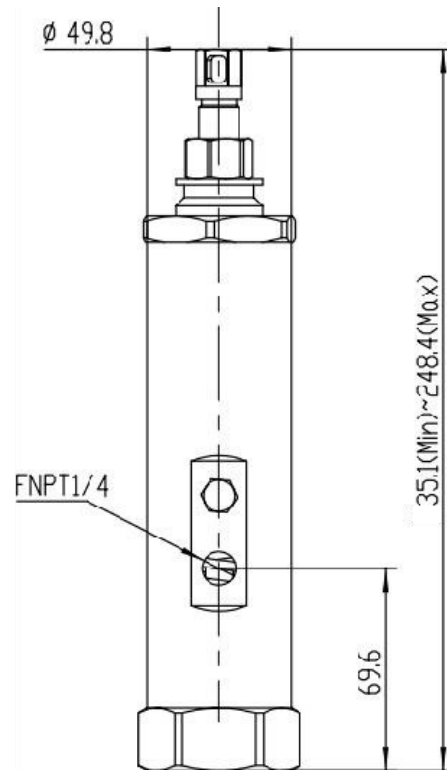
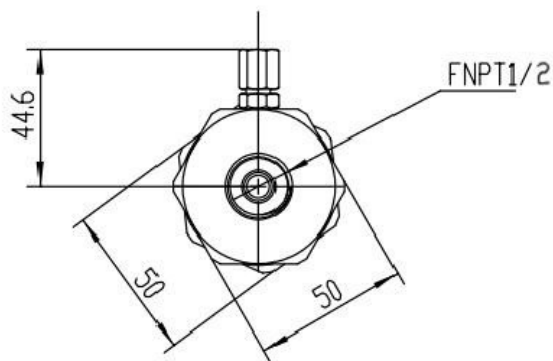
- Construction machinery
- Mining and mineral processing
- Steel industry



Technical characteristics	
Outlets	1
Metering quantity	0.82 - 8.2CC (adjustable)
Lubricant	Grease NLGI 0, 1, 2
Operating temperature	-40 ~93 °C
Operating pressure	70 to 240 bar
Material	Carbon steel
Connection main line	1/2 NPT (F)
Connection outlet	1/4 NPT (F)



## Ordering information of complete set



Part number	Connection outlet
UF-VL1100	1/4 NPT (F)

# Ultra Flow SA



## VL-32 Series Injector Valves

- Shipped with manifolds from 1 to 4"
- Ports to match number of lube points
- Metering quantity adjustable





VL-32 Series metering valves has been designed to deliver lubricant to friction points through the feeding line pressure.

These injectors are supplied with visual in-built level indicators to monitoring the operation.

VL-32 Series metering valves is available in different models: from one to four outlets. Every injector mounted on a manifold can be easily replaced or inspected without disassembling the unit or operating on fittings and tubings.

These units can be installed in any position and can be used with other types of injectors, if necessary.

## Characteristics

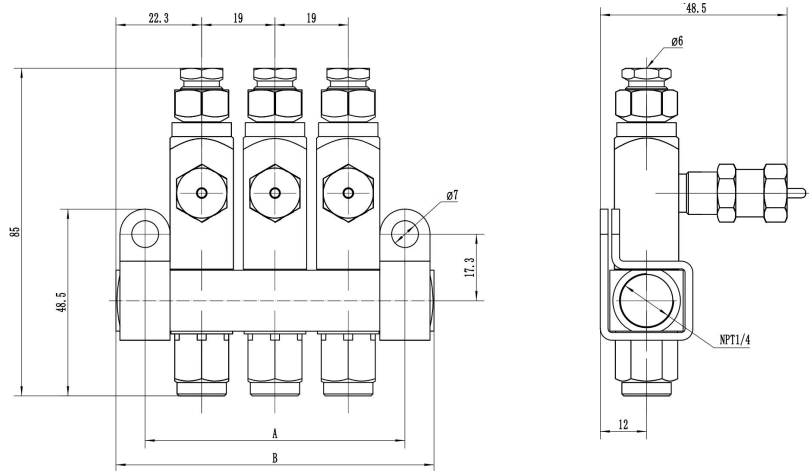
- Shipped with manifolds from 1 to 6 ports to match number of lube points
- Output is externally adjustable
- Indicator stem permits visual check of operation
- Can be removed easily for inspection or replacement

## Applications

- Industrial automation
- Food and beverage
- Mobile on-road
- Pulp and paper
- Heavy industry
- Machine tools
- Construction
- Wind energy
- Oil and gas
- Forestry
- Marine

Technical characteristics	
Outlets	1 to 6
Metering quantity	0.016 - 0.131CC ( adjustable)
Lubricant	Grease NLGI 0, 1, 2
Operating temperature	Max. +93 °C; +200 °F
Operating pressure	8.3 to 24 Mpa
Material	Carbon steel
Connection main line	1/4 NPT(F)
Connection outlet	6mm O.D. tube

## Dimensions



Injector	A/mm	B/mm
1 port manifold	28.9	44.4
2 port manifold	48.26	63.5
3 port manifold	67.06	82.5
4 port manifold	86.11	101.6
5 port manifold	105	120.5
6 port manifold	125.5	139.5

## Ordering information

Part number	Output Number	Outlet	Inlet
UF-VL3201T	1	6mm O.D. tube	1/4 NPT (F)
UF-VL3202T	2	6mm O.D. tube	1/4 NPT (F)
UF-VL3203T	3	6mm O.D. tube	1/4 NPT (F)
UF-VL3204T	4	6mm O.D. tube	1/4 NPT (F)
UF-VL3205T	5	6mm O.D. tube	1/4 NPT (F)
UF-VL3206T	6	6mm O.D. tube	1/4 NPT (F)
UF-VL3200	Ordering information of single metering valve		

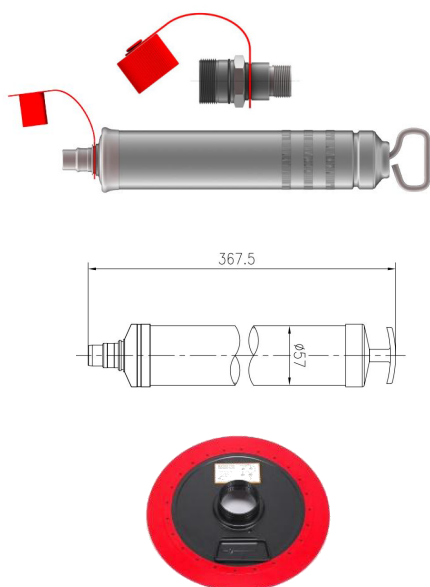
## Lubrication Parts & Accessories



ENGINEERED SOLUTIONS  
FOR PRECISE LUBRICATION



## Follower plate and grease gun kits



Description	Part number	Grease fitting
Grease Gun	UF-MG500	-
Grease fitting	UF-MG500-A	Grease fitting without check valve
Grease fitting	UF-MG500-C	Grease fitting with check valve

Description	Part number	Oil drum
Follower Plate	UF-95660C	16KG

## Electric lubrication pump accessories

### Pump outlet assembly



### Grease filling quick connector



Part number	Description	Pressure	OD
UF-80533PG	With pressure gauge	40MPa	6mm
UF-80533PG-8			8mm
UF-80533	Without pressure gauge		6mm
UF-80533-8			8mm

Part number	Description	Thread
UF-80220	Male connector	G1/4
UF-80221	Female connector	G1/4





## Button with green lamp



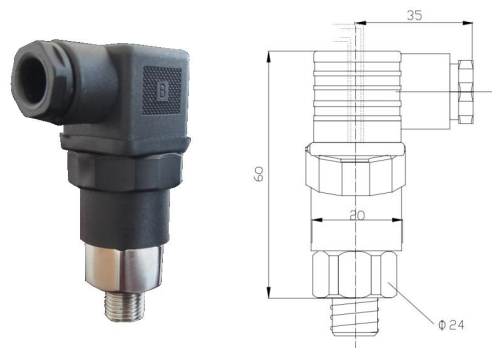
Description	Part number
12V	UF-90212
24V	UF-90224

## Cartridge



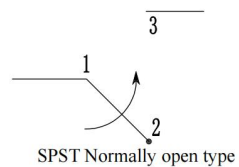
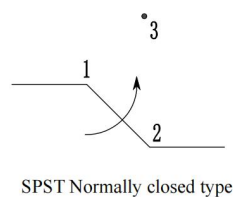
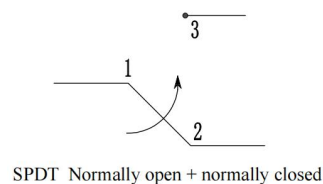
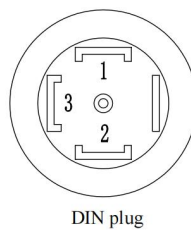
Description	Part number	Reservoir
Cartridge	UFCSL-J100	700CC
	UFCSL-C100	700CC

## Pressure switch

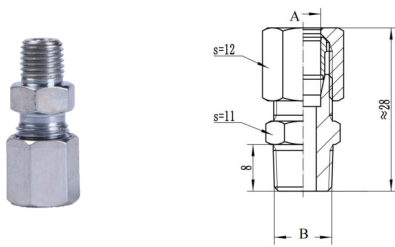


Description	Part number
Adjustable Type	UF-91346

## Wiring diagram

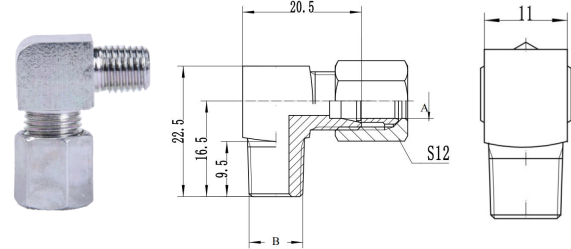


### Straight Connector LL series



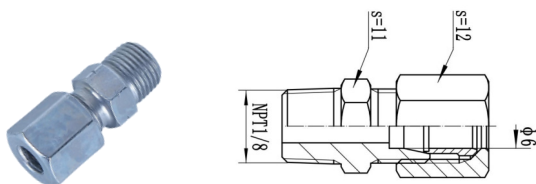
Part number	OD	A	Material
UF-106-004	Ø6	R1/8 Bspt	Carbon steel, galvanized nickel
UF-106-003	Ø6	ZM10*1	
UF-106-002	Ø6	ZM8*1	
UF-106-001	Ø6	ZM6*1	
UF-104-004	Ø4	R1/8 Bspt	
UF-104-003	Ø4	ZM10*1	
UF-104-002	Ø4	ZM8*1	
UF-104-001	Ø4	ZM6*1	

### Elbow Connector LL series



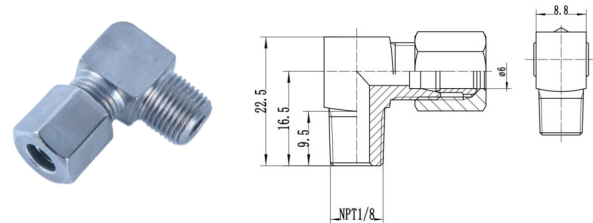
Part number	OD	Thread	Material
UF-106-104	Ø6	R1/8 Bspt	Carbon steel, galvanized nickel
UF-106-103	Ø6	M10*1	
UF-106-102	Ø6	M8*1	
UF-106-101	Ø6	M6*1	
UF-104-104	Ø4	R1/8 Bspt	
UF-104-103	Ø4	M10*1	
UF-104-102	Ø4	M8*1	
UF-104-101	Ø4	M6*1	

### Straight connector LL series NPT



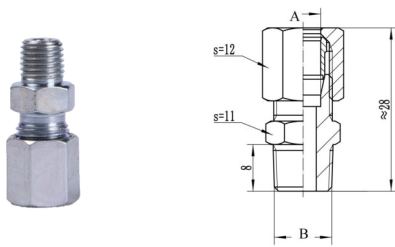
Part number	OD	Thread	Material
UF-5PM0602	Ø6	NPT1/8	Carbon steel, galvanized nickel

### Elbow connector LL series NPT



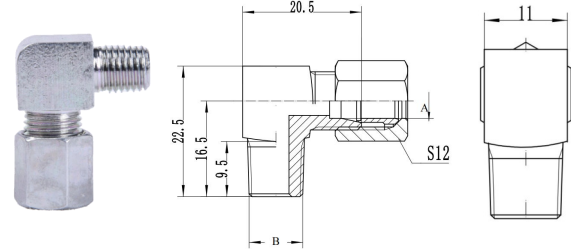
Part number	OD	Thread	Material
UF-5NM0602	Ø6	NPT1/8	Carbon steel, galvanized nickel

### Straight Connector LL series SS



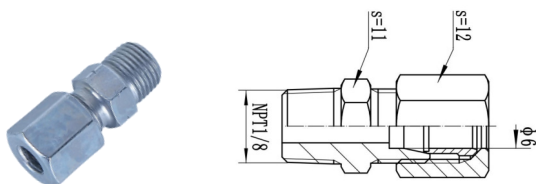
Part number	OD	A	Material
UF-106-004-VA	Ø6	R1/8 Bspt	Stainless Steel
UF-106-003-VA	Ø6	ZM10*1	
UF-106-002-VA	Ø6	ZM8*1	
UF-106-001-VA	Ø6	ZM6*1	
UF-104-004-VA	Ø4	R1/8 Bspt	
UF-104-003-VA	Ø4	ZM10*1	
UF-104-002-VA	Ø4	ZM8*1	
UF-104-001-VA	Ø4	ZM6*1	

### Elbow Connector LL series SS



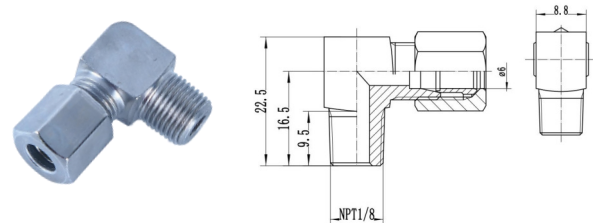
Part number	OD	Thread	Material
UFL-106-104-VA	Ø6	R1/8 Bspt	Stainless Steel
UFL-106-103-VA	Ø6	M10*1	
UFL-106-102-VA	Ø6	M8*1	
UFL-106-101-VA	Ø6	M6*1	
UFL-104-104-VA	Ø4	R1/8 Bspt	
UFL-104-103-VA	Ø4	M10*1	
UFL-104-102-VA	Ø4	M8*1	
UFL-104-101-VA	Ø4	M6*1	

### Straight connector LL series NPT - SS



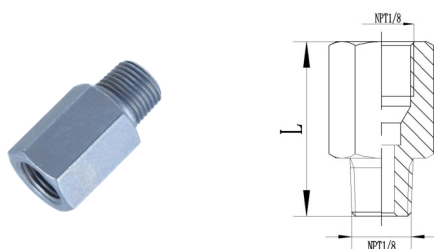
Part number	OD	Thread	Material
UF-5PM0602-VA	Ø6	NPT1/8	Stainless Steel

### Elbow connector LL series NPT - SS



Part number	OD	Thread	Material
UF-5NM0602-VA	Ø6	NPT1/8	Stainless Steel

### Straight extensions NPT



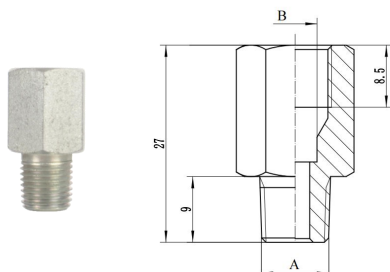
Part number	Thread	Thread	Material	L
UF-5GN02	NPT1/8	NPT1/8	Carbon steel, galvanized nickel	27
UF-5G0202	NPT1/8	NPT1/8		19

### Straight GE adaptor



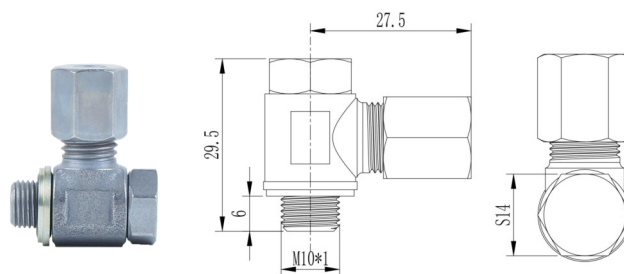
Part number	OD	Thread F	Material
UF-5SF0610	Ø6	M10*1	Carbon steel, galvanized nickel

### Straight extensions



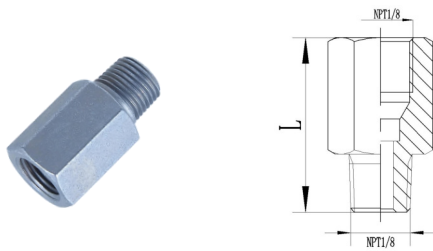
Part number	Thread M	Thread F	Material
UF-5G0210	R1/8 Bspt	M10*1	Carbon steel, galvanized nickel
UF-5G0808	M8*1	M8*1	
UF-5G0404	R1/4 Bspt	R1/4 Bspt	
UF-100-142	M10*1	M10*1	

### Banjo connector



Part number	OD	Thread M
UF-106-123	Ø6	M10*1

### Straight extensions NPT - SS



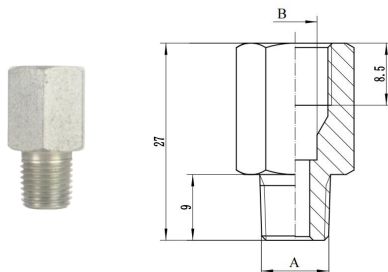
Part number	Thread	Thread	Material	L
UF-5GN02-VA	NPT1/8	NPT1/8	Stainless Steel	27
UF-5G0202-VA	NPT1/8	NPT1/8		19

### Straight GE adaptor - SS



Part number	OD	Thread F	Material
UF-5SF0610-VA	Ø6	M10*1	Stainless Steel

### Straight extensions - SS



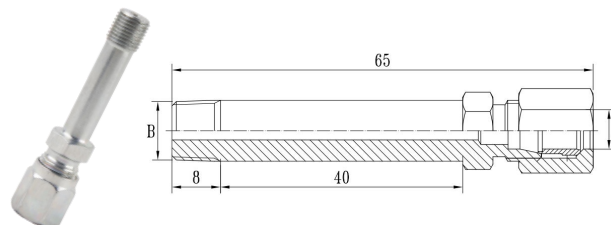
Part number	Thread M	Thread F	Material
UF-5G0210-VA	R1/8 Bspt	M10*1	Stainless Steel
UF-5G0808-VA	M8*1	M8*1	
UF-5G0404-VA	R1/4 Bspt	R1/4 Bspt	
UF-5G1010-VA	M10*1	M10*1	



## BANJO Extension

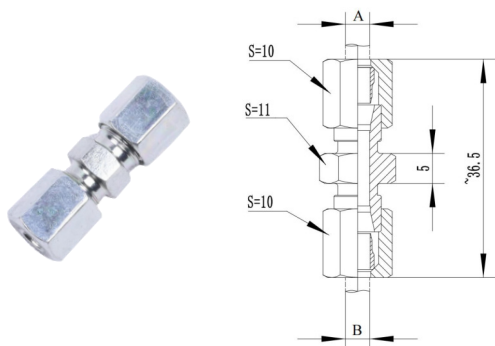


## Extension fitting assembly



Part number	OD	Thread M	Material
UF-5C0602	Ø6	R1/8	Zinc Color-plated
UF-5C0610	Ø6	M10*1	

## Line Connectors



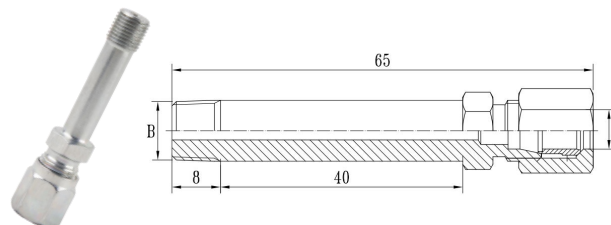
Part number	A	B	Material
UF-5KM0602	Ø6	R1/8	Carbon steel, galvanized nickel
UF-5KM0610	Ø6	M10*1	
UF-5KM0608	Ø6	M8*1	
UF-5KM0606	Ø6	M6*1	
UF-5KM0402	Ø4	R1/8	
UF-5KM0410	Ø4	M10*1	
UF-5KM0408	Ø4	M8*1	
UF-5KM0406	Ø4	M6*1	

Part number	A	B	Material
UF-104-000	Ø4	Ø4	Zinc plated
UF-106-000	Ø6	Ø6	
UF-108-000	Ø8	Ø8	
UF-110-000	Ø10	Ø10	

## BANJO Extension - SS

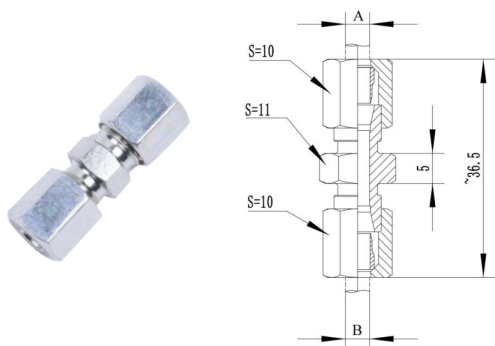


## Extension fitting assembly - SS



Part number	OD	Thread M	Material
UF-5C0602-VA	Ø6	R1/8	Stainless Steel
UF-5C0610-VA	Ø6	M10*1	

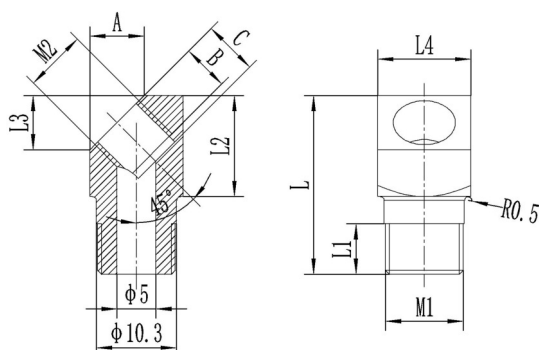
## Line Connectors - SS



Part number	A	B	Material
UF-5KM0602-VA	Ø6	R1/8	Stainless Steel
UF-5KM0610-VA	Ø6	M10*1	
UF-5KM0608-VA	Ø6	M8*1	
UF-5KM0606-VA	Ø6	M6*1	
UF-5KM0402-VA	Ø4	R1/8	
UF-5KM0410-VA	Ø4	M10*1	
UF-5KM0408-VA	Ø4	M8*1	
UF-5KM0406-VA	Ø4	M6*1	

Part number	A	B	Material
UF-104-000-VA	Ø4	Ø4	Stainless Steel
UF-106-000-VA	Ø6	Ø6	
UF-108-000-VA	Ø8	Ø8	
UF-110-000-VA	Ø10	Ø10	

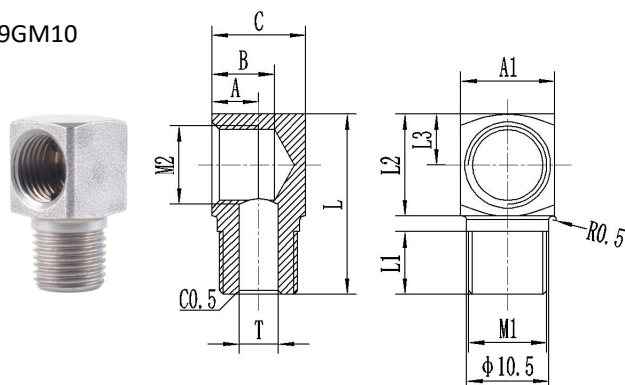
## Elbow Connector 45°



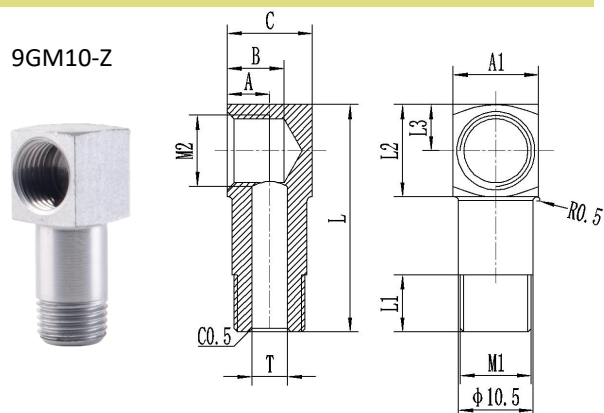
Part number	M1	M2	L	L1	L2	L3	L4	A	B	C
UF-100-822	ZM8*1	M8*1	23	6.5	13	7	12	7	6	7
UF-5EM0410	ZM10*1	M8*1	23	6.5	13	7	12	7	6	7
UF-100-833	ZM10*1	M10*1	23	6.5	13	7	12	7	6	7
UF-100-844	ZG1/8	ZG1/8	23	6.5	13	7	12	7	6	7
UF-100-855	ZG1/4	ZG1/4	33	6.5	18	7	12	7	6	7

## Elbow Connector 90°

9GM10

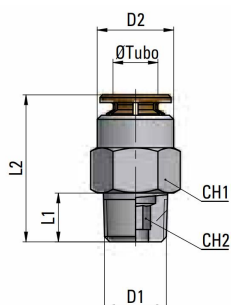


9GM10-Z



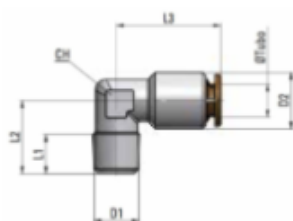
Part number	M1	M2	L	L1	L2	L3	A	B	C	A1
UF-100-711	ZM8*1	M8*1	23	8	13	6.5	6	8	12	12
UF-9GM1008	ZM10*1	M8*1	23	8	13	6.5	6	8	12	12
UF-100-733	ZM10*1	M10*1	23	8	13	6.5	6	8	12	12
UF-9GM10-Z	ZM10*1	M10*1	32	8	13	6.5	6	8	12	12
UF-100-744	ZG1/8	ZG1/8	23	8	13	6.5	6	8	12	12
UF-100-755	ZG1/4	ZG1/4	33	8	18	6.5	6	8	12	17

### Straight Male Push Lock Connector - 80 Bar (Plated Brass)



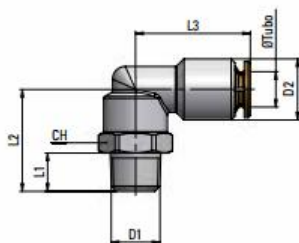
Part number	OD	D1	D2	L1	L2
UF-104-054	Ø4	R1/8	9	7.5	18.5
UF-104-051	Ø4	M6*1.0	9	8	23
UF-104-052	Ø4	M8*1.0	9	8	20
UF-104-053	Ø4	M10*1.0	9	8	20
UF-106-054	Ø6	R1/8	12	7.5	21.5
UF-106-051	Ø6	M6*1.0	12	8	25.5
UF-106-052	Ø6	M8*1.0	12	8	25.5
UF-106-053	Ø6	M10*1.0	12	8	22

### Push Lock Elbow - 80 Bar (Plated Brass)



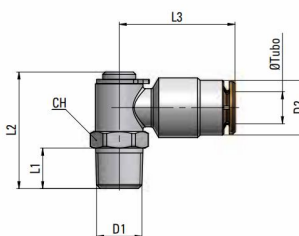
Part number	OD	D1	D2	L1	L2
UF-104-114	Ø4	R1/8	9	7.5	15.5
UF-104-111	Ø4	M6*1.0	9	8	17
UF-104-112	Ø4	M8*1.0	9	8	17
UF-104-113	Ø4	M10*1.0	9	8	18
UF-106-114	Ø6	R1/8	12	7.5	15.5
UF-106-111	Ø6	M6*1.0	12	8	17
UF-106-112	Ø6	M8*1.0	12	8	17
UF-106-113	Ø6	M10*1.0	12	8	18

### Push Lock Rotary Elbow - 60 Bar (Plated Brass)



Part number	OD	D1	D2	L1	L2
UF-MP150418	Ø4	R1/8"	9	7.5	20
UF-MP1504M6	Ø4	M6*1.0	9	8	20.5
UF-MP1504M8	Ø4	M8*1.0	9	8	20.5
UF-MP1504M10	Ø4	M10*1.0	9	8	20.5
UF-MP150618	Ø6	R1/8"	12	7.5	20
UF-MP1506M6	Ø6	M6*1.0	12	8	21.5
UF-MP1506M8	Ø6	M8*1.0	12	8	21.5
UF-MP1506M10	Ø6	M10*1.0	12	8	21.5

### Push Lock Rotary Elbow - 60 Bar (Plated Brass)

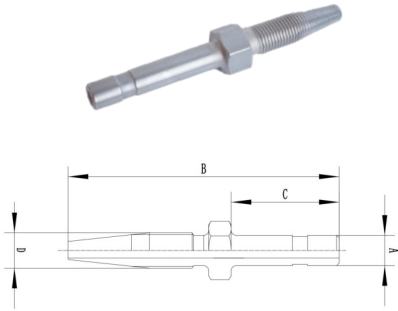


Part number	OD	D1	D2	L1	L2
UF-HP180418	Ø4	R1/8"	9.5	8.5	22
UF-HP1804M6-1	Ø4	M6*0.75	9.5	6	22
UF-HP1804M6	Ø4	M6*1	9.5	8	22
UF-HP1804M8	Ø4	M8*1	9.5	8	22
UF-HP1804M10	Ø4	M10*1	9.5	8	22
UF-HP180618	Ø6	R1/8"	11.5	8.5	24
UF-HP180614	Ø6	R1/4"	11.5	11	24
UF-HP1806M6	Ø6	M6*1	11.5	8	24
UF-HP1806M8	Ø6	M8*1	11.5	8	24
UF-HP1806M10	Ø6	M10*1	11.5	8	24



## 6mm Hose Stud Straight - Carbon Steel

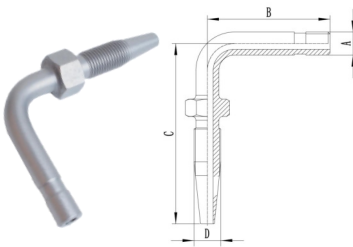
M7 for 8.4mm hose  
M10 for 12mm hose



Part number	A	B	C	D	Material
UF-K049 (Short)	Ø6	49	18	M7*0.75	Carbon steel, galvanized nickel
UF-K051 (Long)	Ø6	64	30	M7*0.75	
UF-K054-Groove	Ø6	54	22	M7*0.75	
UF-K053-Groove	Ø6	61	30	M7*0.75	

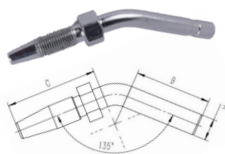
## 6mm Hose Stud 90° Carbon Steel

M7 for 8.4mm hose  
M10 for 12mm hose



Part number	A	B	C	D	Material
UF-K151 - Groove	Ø6	28	45	M7*0.75	Carbon steel, galvanized nickel
UF-K152 - Groove	Ø6	25	45	M7*0.75	
UF-K149 (Short)	Ø6	21	45	M7*0.75	
UF-K152 (Long)	Ø6	33	45	M7*0.75	

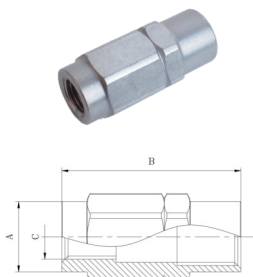
## 6mm Hose Stud 45° Carbon Steel



Part number	OD	B	C	D	Material
UF-K-057	Ø6	30	57	M7*0.75	Carbon steel, galvanized nickel

## Threaded sleeve Carbon Steel

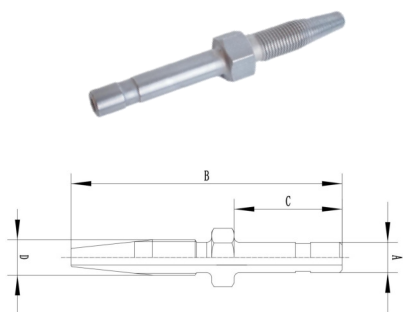
M7 for 8.4mm hose  
M10 for 12mm hose



Part number	OD	A	B	C	Material
UF-K-050	Ø6/8	SW12	28	M7*0.75	Carbon steel, galvanized nickel
UF-K-060	Ø6/8	SW17	36	M10*1	

## 6mm Hose Stud Straight - Stainless Steel

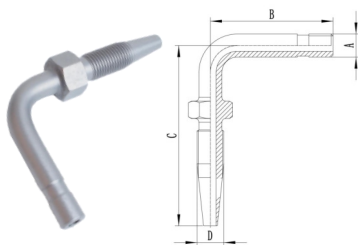
M7 for 8.4mm hose  
M10 for 12mm hose



Part number	A	B	C	D	Material
UF-K049-VA(Short)	Ø6	49	18	M7*0.75	Stainless Steel
UF-K051-VA (Long)	Ø6	64	30	M7*0.75	
UF-K054-VA-Groove	Ø6	54	22	M10*1	
UF-K053-VA-Groove	Ø8	61	30	M10*1	

## 6mm Hose Stud 90° Stainless Steel

M7 for 8.4mm hose  
M10 for 12mm hose



Part number	A	B	C	D	Material
UF-K151-VA - Groove	Ø6	28	45	M7*0.75	Stainless Steel
UF-K152-VA - Groove	Ø6	25	45	M7*0.75	
UF-K149-VA(Short)	Ø6	21	45	M7*0.75	
UF-K152-VA(Long)	Ø8	33	45	M7*0.75	

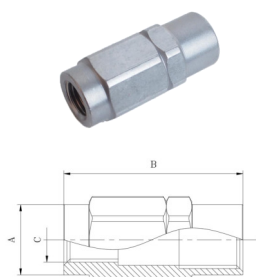
## 6mm Hose Stud 45° Stainless Steel



Part number	OD	B	C	D	Material
UF-K057-VA	Ø6	30	57	M7*0.75	Stainless Steel

## Threaded sleeve Stainless Steel

M7 for 8.4mm hose  
M10 for 12mm hose



Part number	OD	A	B	C	Material
UF-K050-VA	Ø6	Ø11	28	M7*0.75	Stainless Steel
UF-K060-VA	Ø8	Ø14	28	M10*1	

## Coupling Nuts Carbon Steel - Galvanized Nickel



## Ferrule



Part number	Thread	TUBE O.D.	MPa
UF-104-200	M8*1	Ø4 (SW10)	Super light series LL
UF-106-200	M10*1	Ø6(SW12)	
UF-106-200L	M12*1.5	Ø6(SW14)	Light series L
UF-108-200	M14*1.5	Ø8(SW14)	
UF-108-200-L	M16*1.5	Ø8(SW17)	
UF-110-200-L	M18*1.5	Ø10(SW19)	

Part number	TUBE O.D.	MPa
UF-104-210-LL	Ø4	Super light series LL
UF-106-210-LL	Ø6	
UF106-210L	Ø6	Light series L
UF-108-210-LL	Ø8	
UF-108-210-L	Ø8	
UF-110-210-L2	Ø10	

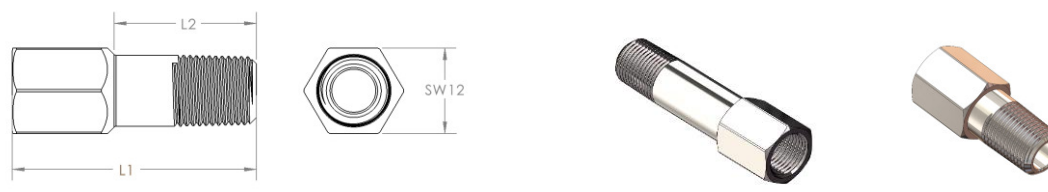
## Coupling Nuts - Stainless Steel



Part number	Thread	TUBE O.D.	MPa
UF-104-200 - VA	M8*1	Ø4	Super light series LL
UF-106-200- VA	M10*1	Ø6	
UF-106-200L- VA	M12*1.5	Ø6	Light series L
UF-108-200- VA	M14*1.5	Ø8	
UF-110-200L- VA	M16*1.5	Ø10	

## Extensions

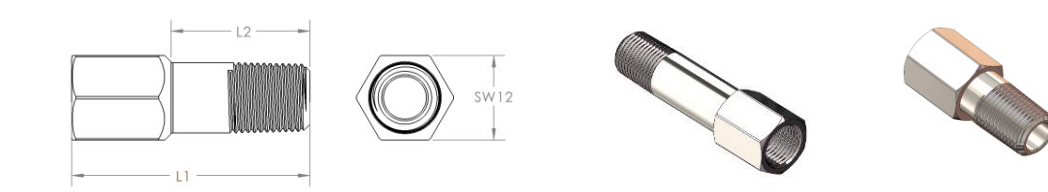
Zinc-nickel, Cr-6-free



NPT THREADS AVAILABLE ON REQUEST

Item Code / UF Code	Alternative Part Number	Description	Dim Ref 1	Dim Ref 2	Manufacture	Pressure		
<b>ADAPTORS EXTENSION CONNECTORS MILD STEEL</b>		<b>EXTENSIONS MILD STEEL</b>	<b>REFERENCE 1</b>	<b>REFERENCE 2</b>				
UF-004-025	NA	EXTENSION 1/8BSP(F)-1/8BSP(M) MILD STEEL	L1=25MM	L2=11MM	YES	400BAR		
UF-004-030	NA	EXTENSION 1/8BSP(F)-1/8BSP(M) MILD STEEL	L1=30MM	L2=16MM	YES	400BAR		
UF-004-035	NA	EXTENSION 1/8BSP(F)-1/8BSP(M) MILD STEEL	L1=35MM	L2=21MM	YES	400BAR		
UF-004-040	NA	EXTENSION 1/8BSP(F)-1/8BSP(M) MILD STEEL	L1=40MM	L2=26MM	YES	400BAR		
UF-004-045	NA	EXTENSION 1/8BSP(F)-1/8BSP(M) MILD STEEL	L1=45MM	L2=31MM	YES	400BAR		
UF-004-050	NA	EXTENSION 1/8BSP(F)-1/8BSP(M) MILD STEEL	L1=50MM	L2=36MM	YES	400BAR		
UF-004-055	NA	EXTENSION 1/8BSP(F)-1/8BSP(M) MILD STEEL	L1=55MM	L2=41MM	YES	400BAR		
UF-005-026	NA	EXTENSION 1/8BSP(F)-1/4BSP(M) MILD STEEL	L1=26MM	L2=12MM	YES	400BAR		
UF-005-040	NA	EXTENSION 1/8BSP(F)-1/4BSP(M) MILD STEEL	L1=40MM	L2=26MM	YES	400BAR		
UF-005-050	NA	EXTENSION 1/8BSP(F)-1/4BSP(M) MILD STEEL	L1=50MM	L2=36MM	YES	400BAR		
UF-005-055	NA	EXTENSION 1/8BSP(F)-1/4BSP(M) MILD STEEL	L1=55MM	L2=41MM	YES	400BAR		

Stainless Steel

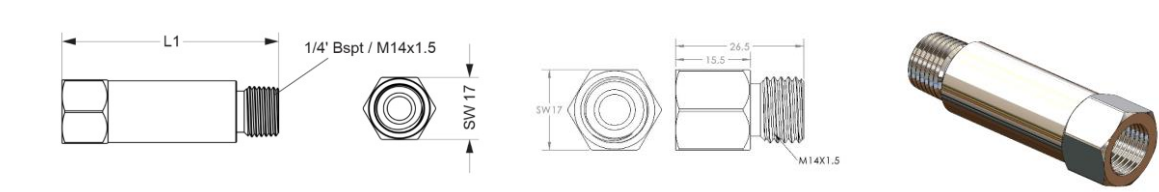


NPT THREADS AVAILABLE ON REQUEST

Item Code / UF Code	Alternative Part Number	Description	Dim Ref 1	Dim Ref 2	Manufacture	Pressure		
<b>ADAPTORS EXTENSION CONNECTORS STAINLESS STEEL</b>		<b>EXTENSIONS STAINLESS STEEL</b>	<b>REFERENCE 1</b>	<b>REFERENCE 2</b>				
UF-004-025SS	NA	EXTENSION 1/8BSP(F)-1/8BSP(M) STAINLESS STEEL	L1=25MM	L2=11MM	YES	400BAR		
UF-004-030SS	NA	EXTENSION 1/8BSP(F)-1/8BSP(M) STAINLESS STEEL	L1=30MM	L2=16MM	YES	400BAR		
UF-004-035SS	NA	EXTENSION 1/8BSP(F)-1/8BSP(M) STAINLESS STEEL	L1=35MM	L2=21MM	YES	400BAR		
UF-004-040SS	NA	EXTENSION 1/8BSP(F)-1/8BSP(M) STAINLESS STEEL	L1=40MM	L2=26MM	YES	400BAR		
UF-004-045SS	NA	EXTENSION 1/8BSP(F)-1/8BSP(M) STAINLESS STEEL	L1=45MM	L2=31MM	YES	400BAR		
UF-004-050SS	NA	EXTENSION 1/8BSP(F)-1/8BSP(M) STAINLESS STEEL	L1=50MM	L2=36MM	YES	400BAR		
UF-004-055SS	NA	EXTENSION 1/8BSP(F)-1/8BSP(M) STAINLESS STEEL	L1=55MM	L2=41MM	YES	400BAR		
UF-005-026SS	NA	EXTENSION 1/8BSP(F)-1/4BSP(M) STAINLESS STEEL	L1=26MM	L2=12MM	YES	400BAR		
UF-005-040SS	NA	EXTENSION 1/8BSP(F)-1/4BSP(M) STAINLESS STEEL	L1=40MM	L2=26MM	YES	400BAR		
UF-005-050SS	NA	EXTENSION 1/8BSP(F)-1/4BSP(M) STAINLESS STEEL	L1=50MM	L2=36MM	YES	400BAR		
UF-005-055SS	NA	EXTENSION 1/8BSP(F)-1/4BSP(M) STAINLESS STEEL	L1=55MM	L2=41MM	YES	400BAR		

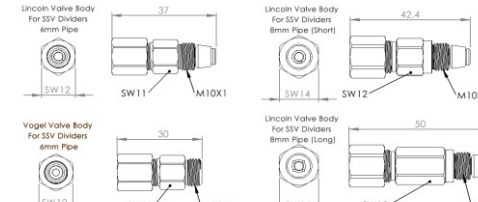
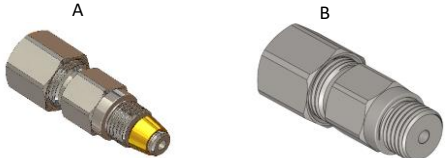
## Pump Element Extensions

Stainless Steel  
Zinc-nickel, Cr-6-free




Item Code / UF Code	Alternative Part Number	Description	Dim Ref 1	Dim Ref 2	Manufacture	Pressure		
<b>PUMP ELEMENT EXTENSIONS MILD STEEL &amp; STAINLESS STEEL</b>		<b>PART DESCRIPTION</b>	<b>REFERENCE 1</b>	<b>HEX SIZE</b>				
UF-LLPE-MS	NA	Pump Element Lincoln L56.6mm with 1/4' BSP(T) (M)	L1=56.6MM	HEX=17MM	YES	400BAR		
UF-LLPE-SS	NA	Pump Element Lincoln L56.6mm with 1/4' BSP(T) (M)	L1=56.6MM	HEX=17MM	YES	400BAR		
UF-VLPE-MS	NA	Pump Element Vogel L56.6mm with M14X1.5 (M)	L1=56.6MM	HEX=17MM	YES	400BAR		
UF-VLPE-SS	NA	Pump Element Vogel L56.6mm with M14X1.5 (M)	L1=56.6MM	HEX=17MM	YES	400BAR		
UF-LSPE-MS	NA	Pump Element Lincoln L41.0mm with 1/4' BSP(T) (M)	L1=41.0MM	HEX=17MM	YES	400BAR		
UF-LSPE-SS	NA	Pump Element Lincoln L41.0mm with 1/4' BSP(T) (M)	L1=41.0MM	HEX=17MM	YES	400BAR		
UF-VSPE-MS	NA	Pump Element Vogel L41.0mm with M14X1.5 (M)	L1=41.0MM	HEX=17MM	YES	400BAR		
UF-VSPE-SS	NA	Pump Element Vogel L41.0mm with M14X1.5 (M)	L1=41.0MM	HEX=17MM	YES	400BAR		
UF-VPES-OMS	NA	Pump Element extension short M14X1.5 Mild Steel	L1=26.5MM	HEX=17MM	YES	400BAR		
UF-VPES-SS	NA	Pump Element extension short M14X1.5 SS	L1=26.5MM	HEX=17MM	YES	400BAR		

## Valve Body Outlets

 									
Stainless Steel Zinc-nickel, Cr-6-free									
Item Code / UF Code	Alternative Part Number	Description	Dim Ref 1	Dim Ref 2	Manufacture	Minimum Qty Req	Pressure	Price Rands	US Dollar Price
<b>CHECK VALVE FOR LUBRICATION DIVIDERS</b>									
UF-306-003-RVL	504-30344-4	VALVE BODY LINCOLN 6MM MS (A)	REFERENCE 1	HEX SIZE	YES	500	350BAR		
UF-CN6-M10LL	223-12374-9	COUPLING NUT 6MM MS		HEX 11MM	YES	500			
UF-SCR-6L	223-12295-3	CUTTING RING 6MM MS		L SERIES	YES	500	305 BAR		
UF-SCR-6LL	223-12295-2	CUTTING RING 6MM MS		LL SERIES	YES	500	107 BAR		
UF-BEVB-001	NA	BRASS FERRULE		ONLY LINCOLN CV	YES	500			
UF-LVBSS-006	NA	VALVE BODY COMPLETE 6MM SS (A)	37mm Long	HEX 11MM	YES	500	350BAR		
UF-CN6-M10LL-SS	223-13638-2	COUPLING NUT 6MM SS		HEX 11MM	YES	500			
UF-SLVBMS-08 SHORT	NA	VALVE BODY LINCOLN 8MM SHORT MS (A)	42mm Long	HEX 12MM	YES	500	350BAR		
UF-LVBMS-08 LONG	NA	VALVE BODY LINCOLN 8MM LONG MS (A)	50mm Long	HEX 12MM	YES	500	350BAR		
UF-CN8-M12LL	223-13032-3	COUPLING NUT 8MM MS		HEX 14MM	YES	500			
UF-SCR-8L	NA	CUTTING RING 8MM MS		L SERIES	YES	500	305 BAR		
UF-SCR-8LL	223-12295-5	CUTTING RING 8MM MS		LL SERIES	YES	500	107 BAR		
UF-SLVBSS-08 SHORT	NA	VALVE BODY LINCOLN 8MM SHORT SS (A)	42mm Long	HEX 12MM	YES	500	350BAR		
UF-LVBSS-08 LONG	NA	VALVE BODY LINCOLN 8MM LONG SS (A)	50mm Long	HEX 12MM	YES	500	350BAR		
UF-CN8-M12LL-SS	223-13638-1	COUPLING NUT 8MM SS		HEX 14MM	YES	500			
UF-VBMS-M10	NA	VALVE BODY VOGEL 6MM MS (B)	30mm Long	HEX 11MM	YES	500	350BAR		
UF-VBSS-M10	NA	VALVE BODY VOGEL 6MM SS (B)	30mm Long	HEX 11MM	YES	500	350BAR		
UF-RVBMS-1/8SPT	NA	RAASM VALVE BODY 6MM MS (B)	32mm Long	HEX 11MM	YES	500	350BAR		
UF-RVBSS-1/8SPT	NA	RAASM VALVE BODY 6MM SS (B)	32mm Long	HEX 11MM	YES	500	350BAR		
UF-RVBMS-08 Short	NA	RAASM VALVE BODY 8MM MS SHORT (B)		HEX 12MM	YES	500	350BAR		
UF-RVBSS-08 Short	NA	RAASM VALVE BODY 8MM SS SHORT (B)		HEX 12MM	YES	500	350BAR		
UF-RVBMS-08 Long	NA	RAASM VALVE BODY 8MM MS LONG (B)		HEX 12MM	YES	500	350BAR		
UF-RVBSS-08 Long	NA	RAASM VALVE BODY 8MM SS LONG (B)		HEX 12MM	YES	500	350BAR		

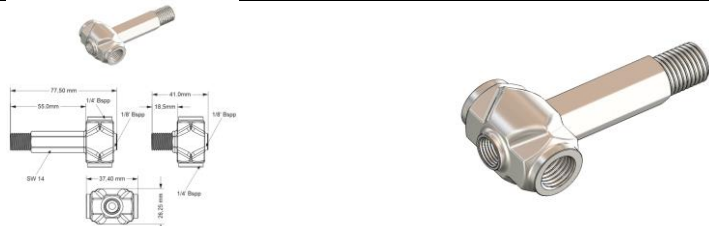
## 5 & 6 Way Adaptors

									
Stainless Steel Zinc-nickel, Cr-6-free									
Item Code / UF Code	Alternative Part Number	Description	Dim Ref 1	Dim Ref 2	Manufacture	Minimum Qty Req	Pressure	Price Rands	US Dollar Price
<b>ADAPTORS 6 WAY T LONG</b>									
UF-6WT-LMS-1/4SPT	NA	6 WAY ADAPTOR FOR LINCOLN & VOGEL PUMPS	REFERENCE 1	HEX SIZE	YES	100	600 BAR		
UF-6WT-LSS-1/4SPT	NA	6 WAY ADAPTOR 1/4SPT - LINCOLN - SS	L1=57.5MM	HEX 14MM	YES	100	600 BAR		
UF-6WT-VLMS-M14X1.5	NA	6 WAY ADAPTOR 14X1.5 - VOGEL - MS	L1=57.5MM	HEX 14MM	YES	100	600 BAR		
UF-6WT-VLSS-M14X1.5	NA	6 WAY ADAPTOR 14X1.5 - VOGEL - SS	L1=57.5MM	HEX 14MM	YES	100	600 BAR		

									
Stainless Steel Zinc-nickel, Cr-6-free									
Item Code / UF Code	Alternative Part Number	Description	Dim Ref 1	Dim Ref 2	Manufacture	Minimum Qty Req	Pressure	Price Rands	US Dollar Price
<b>ADAPTORS 6 WAY T SHORT</b>									
UF-6WT-LMS-1/4SPT	NA	6 WAY ADAPTOR 1/4SPT - LINCOLN - MS	L1=41MM	HEX 14MM	YES	100	600 BAR		
UF-6WT-LSS-1/4SPT	NA	6 WAY ADAPTOR 1/4SPT - LINCOLN - SS	L1=41MM	HEX 14MM	YES	100	600 BAR		
UF-6WT-VLMS-M14X1.5	NA	6 WAY ADAPTOR 14X1.5 - VOGEL - MS	L1=41MM	HEX 14MM	YES	100	600 BAR		
UF-6WT-VLSS-M14X1.5	NA	6 WAY ADAPTOR 14X1.5 - VOGEL - SS	L1=41MM	HEX 14MM	YES	100	600 BAR		



## 3 Way adaptor Extensions long

		Stainless Steel Zinc-nickel, Cr-6-free							
Item Code / UF Code	Alternative Part Number	Description	Dim Ref 1	Dim Ref 2	Manufacture	Minimum Qty Req	Pressure	Price Rands	US Dollar Price
<b>ADAPTORS 3 WAY T LONG</b>		<b>3 WAY ADAPTOR FOR LINCOLN &amp; VOGEL PUMPS</b>	<b>REFERENCE 1</b>	<b>HEX SIZE</b>					
UF-3WT-LLMS-1/4BSPT	NA	3 WAY ADAPTOR 1/4BSPT - LINCOLN - MS	LENGTH=77MM	HEX 14MM	YES	100	600 BAR		
UF-3WT-LLSS-1/4BSPT	NA	3 WAY ADAPTOR 1/4BSPT - LINCOLN - SS	LENGTH=77MM	HEX 14MM	YES	100	600 BAR		
UF-3WT-VLMS-M14X1.5	NA	3 WAY ADAPTOR 14X1.5 - VOGEL - MS	LENGTH=77MM	HEX 14MM	YES	100	600 BAR		
UF-3WT-VLSS-M14X1.5	NA	3 WAY ADAPTOR 14X1.5 - VOGEL - SS	LENGTH=77MM	HEX 14MM	YES	100	600 BAR		

Stainless Steel  
Zinc-nickel, Cr-6-free

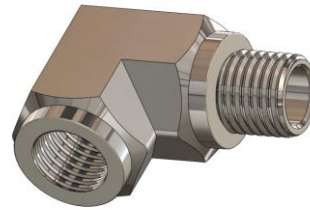
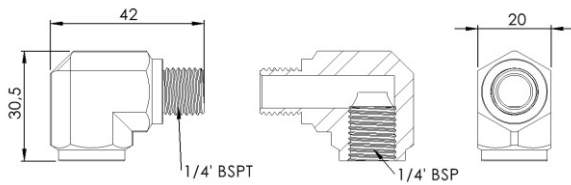
Item Code / UF Code	Alternative Part Number	Description	Dim Ref 1	Dim Ref 2	Manufacture	Minimum Qty Req	Pressure	Price Rands	US Dollar Price
<b>ADAPTORS 3 WAY T SHORT</b>		<b>3 WAY ADAPTOR FOR LINCOLN &amp; VOGEL PUMPS</b>	<b>REFERENCE 1</b>	<b>HEX SIZE</b>					
UF-3WT-LSMS-1/4BSPT	NA	3 WAY ADAPTOR 1/4BSPT - LINCOLN - MS	LENGTH=41MM	HEX 14MM	YES	100	600 BAR		
UF-3WT-LSSS-1/4BSPT	NA	3 WAY ADAPTOR 1/4BSPT - LINCOLN - SS	LENGTH=41MM	HEX 14MM	YES	100	600 BAR		
UF-3WT-VSMS-M14X1.5	NA	3 WAY ADAPTOR 14X1.5 - VOGEL - MS	LENGTH=41MM	HEX 14MM	YES	100	600 BAR		
UF-3WT-VSSS-M14X1.5	NA	3 WAY ADAPTOR 14X1.5 - VOGEL - SS	LENGTH=41MM	HEX 14MM	YES	100	600 BAR		

## Bulkhead Connectors

			Stainless Steel Zinc-nickel, Cr-6-free						
Item Code / UF Code	REFERENCE TO PART	Description	Dim Ref 1	Dim Ref 2	Manufacture	Minimum Qty Req	Pressure	Price Rands	US Dollar Price
<b>BULKHEAD CONNECTORS JIC 37° &amp; GEL SERIES</b>		<b>BULKHEAD CONNECTORS M12, MILD STEEL &amp; SS</b>	<b>DRILL PANEL HOLE</b>	<b>REFERENCE 2</b>					
UF-BH7/16-GE6LMS	REF: A	BULKHEAD CONNECTOR 7/16" TO CONNECT TO 6MM PIPE	12.5MM	L2=6MM	YES	100	500BAR		
UF-BH7/16-GE6LSS	REF: A	BULKHEAD CONNECTOR 7/16" TO CONNECT TO 6MM PIPE	12.5MM	L2=6MM	YES	100	500BAR		
UF-BH7/16-GE8LMS	REF: A	BULKHEAD CONNECTOR 7/16" TO CONNECT TO 8MM PIPE	12.5MM	L2=8MM	YES	100	500BAR		
UF-BH7/16-GE8LSS	REF: A	BULKHEAD CONNECTOR 7/16" TO CONNECT TO 8MM PIPE	12.5MM	L2=8MM	YES	100	500BAR		
UF-BH7/16-7/16MS	REF: B	BULKHEAD CONNECTOR 7/16" TO CONNECT 7/16" JIC	12.5MM	7/16" UNF	YES	100	500BAR		
UF-BH7/16JIC-7/16	REF: B	BULKHEAD CONNECTOR 7/16" TO CONNECT 7/16" JIC SS	12.5MM	7/16" UNF	YES	100	500BAR		
UF-GE6L-GE6LMS	REF: C	BULKHEAD CONNECTOR 6MM PIPE TO CONNECT TO 6MM PIPE	12.5MM	L2=6MM	YES	100	500BAR		
UF-GE6L-GE6LSS	REF: C	BULKHEAD CONNECTOR 6MM PIPE TO CONNECT TO 6MM PIPE	12.5MM	L2=6MM	YES	100	500BAR		
UF-GE8L-GE8LMS	REF: C	BULKHEAD CONNECTOR 8MM PIPE TO CONNECT TO 8MM PIPE	12.5MM	L2=8MM	YES	100	500BAR		
UF-GE8L-GE8LSS	REF: C	BULKHEAD CONNECTOR 8MM PIPE TO CONNECT TO 8MM PIPE	12.5MM	L2=8MM	YES	100	500BAR		
UF-GE6L-GE8LMS	REF: C	BULKHEAD CONNECTOR 6MM PIPE TO CONNECT TO 8MM PIPE	12.5MM	L1=8MM, L2=6MM	YES	100	500BAR		
UF-GE6L-GE8LSS	REF: C	BULKHEAD CONNECTOR 6MM PIPE TO CONNECT TO 8MM PIPE	12.5MM	L1=8MM, L2=6MM	YES	100	500BAR		

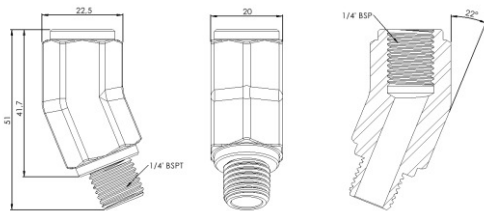
## High Pressure / heavy duty Elbows, T Connectors & special T Sections

Stainless Steel



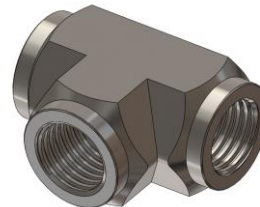
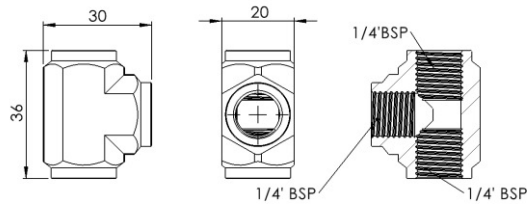
Item Code / UF Code	REFERENCE TO PART	Description	Dim Ref 1	Dim Ref 2	Manufacture	Minimum Qty Req	Pressure	Price Rands	US Dollar Price
ELBOW 90°	Alternative Part Number	ELBOW 90° STAINLESS STEEL S SERIES	DIMENSION	DIMENSION					
UF-E90-SS	NA	ELBOW 90° STAINLESS STEEL			YES	50	600 BAR		

Stainless Steel



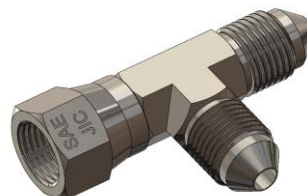
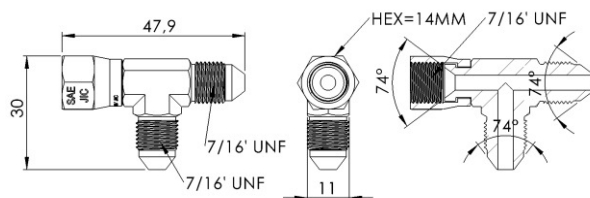
Item Code / UF Code	REFERENCE TO PART	Description	Dim Ref 1	Dim Ref 2	Manufacture	Minimum Qty Req	Pressure	Price Rands	US Dollar Price
ELBOW 22°	Alternative Part Number	ELBOW 22° STAINLESS STEEL S SERIES	DIMENSION	DIMENSION					
UF-E22-SS	NA	ELBOW 22° STAINLESS STEEL			YES	50	600 BAR		

Stainless Steel



Item Code / UF Code	REFERENCE TO PART	Description	Dim Ref 1	Dim Ref 2	Manufacture	Minimum Qty Req	Pressure	Price Rands	US Dollar Price
3 WAY T	Alternative Part Number	3 WAY T STAINLESS STEEL S SERIES	DIMENSION	DIMENSION					
UF-E3T-SS	NA	3 WAY T STAINLESS STEEL			YES	50	600 BAR		

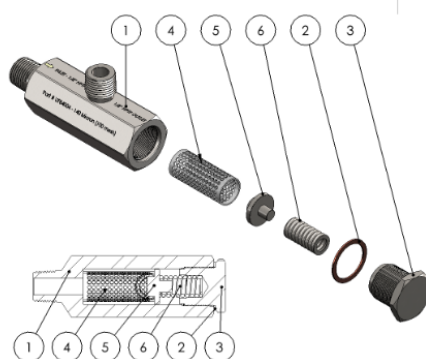
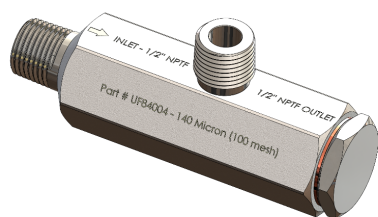
Stainless Steel



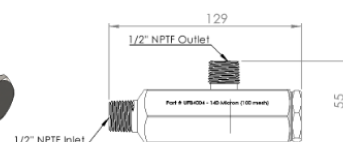
Item Code / UF Code	REFERENCE TO PART	Description	Dim Ref 1	Dim Ref 2	Manufacture	Minimum Qty Req	Pressure	Price Rands	US Dollar Price
3 WAY T	Alternative Part Number	3 WAY T STAINLESS STEEL S SERIES	DIMENSION	DIMENSION					
UF-E7/16T	NA	3 WAY 7/16' T WITH SWIVEL STAINLESS STEEL			YES	50	300 BAR		

## Grease filter : 140µm 100 Mesh - UF-84004.....Grease Filter 250µm - UF-84013

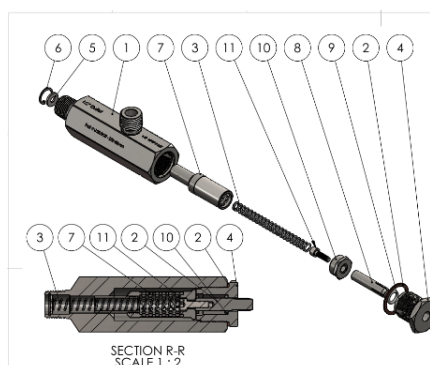
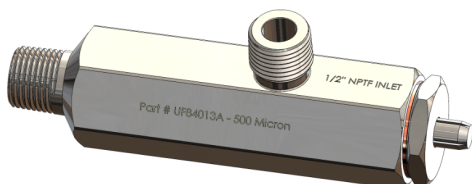
UF-84004



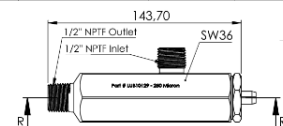
ITEM NO.	DESCRIPTION	PART #	QTY.
1	Main Body 84004	UFMDF-84004	1
2	Copper Washer 84004	UFCW-84004	1
3	End Cap 84004	UFEC-84004	1
4	Filter Cartridge 140 micron (100 Mesh)	UFEC-84004	1
5	Spring Support 84004	UFSS-84004	1
6	Main Spring 84004	UFMS-84004	1



UF-84013

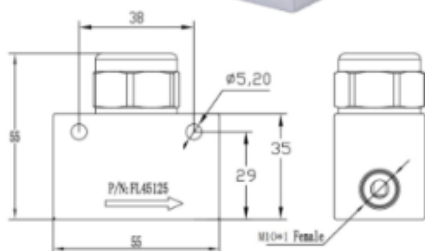


ITEM NO.	DESCRIPTION	PART #	QTY.
1	Main Body UF84013	UFMDF-84013	1
2	Copper Washer 84004	UFCW-84004	1
3	Main Spring UF84013	UFMS-84013	1
4	End Cap UF84013	UFEC-84013	1
5	Steel Washer M6X14	UFSW14	1
6	Circlip 16mm Int.	UFCC-16MM	1
7	Filter Cartridge 250 Micron for UF84013	UF84013FE	1
8	Indicator Pin UF84013	UFIP-84013	1
9	O-ring 9X2.5 Viton	OR9X2.5VIT	1
10	Indicator Pin Support Nut	UFIPSN-84013	1
11	Caphead M5X16 S5	UFCHSM5X16	1



Complies to general & driven Machinery Regulations - DMR & GMR

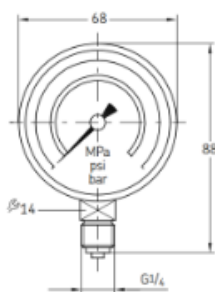
## Grease filter: 180µm and 125µm




Part number	Rate	Thread F	Material
UF-AL45180	180µm	M10*1	AL
UF-AL45125	125µm	M10*1	

To order filters with other rate, please contact your sales manager.

## Pressure Gauges



68  
88  
14  
G1/4

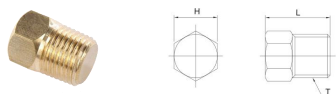


Stainless Steel  
Glycerin filled

**37**

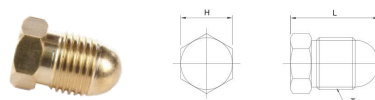
Item Code / Uf Code	REFERENCE TO PART	Description	Dim Ref 1	Dim Ref 2	Manufacture	Pressure
<b>PRESSURE GAUGES STAINLESS STEEL</b>		<b>PRESSURE GAUGES WITH 1/4" BSPT BOTTOM MOUNT</b>	<b>HEX SIZE 1</b>	<b>DIMENSION L1</b>		
UF-PG55-40	169-104-015	PRESSURE GAUGE 0-40 BAR SS	HEX 14MM	L=88MM	YES	0-40BAR
UF-PG55-60	169-106-015	PRESSURE GAUGE 0-60 BAR SS	HEX 14MM	L=88MM	YES	0-60BAR
UF-PG55-100	169-110-015	PRESSURE GAUGE 0-100 BAR SS	HEX 14MM	L=88MM	YES	0-100BAR
UF-PG22-250	169-125-015	PRESSURE GAUGE 0-250 BAR SS	HEX 14MM	L=88MM	YES	0-250BAR
UF-PG55-400	169-140-001	PRESSURE GAUGE 0-400 BAR SS	HEX 14MM	L=88MM	YES	0-400BAR
UF-PG55-600	NA	PRESSURE GAUGE 0-600 BAR SS	HEX 14MM	L=88MM	YES	0-600BAR

### Closure plug - (Brass)



Part number	L	T	H
UF-3G0408	12	M8*1.0	8
UF-3G0601	14	PT1/8"	10

### Sleeve plug - (Brass)



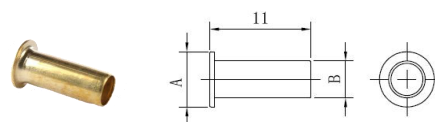
Part number	L	T	H
UF-3G04	16	M8*1.0	8
UF-3G06	17	M10*1.0	10

### Straight Fitting assembly - (Brass)



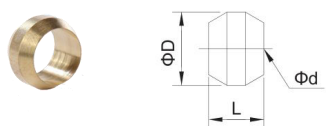
Part number	OD	Thread
UF-3D0410T	Ø4	M10*1
UF-3D0610T	Ø6	M10*1
UF-3D0408T	Ø4	M8*1.0
UF-3D0406T	Ø4	M6*1.0

### Re-enforcing tube - (Brass)



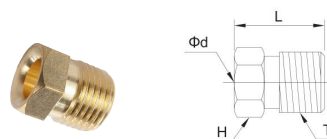
Part number	A	B
UF-BF04	4	2
UF-BF0425	4	2.5
UF-BF06	6	4
UF-BF0630	6	3

### Cone Ferrule - (Brass)



Part number	OD	Ød	ØD	L
UF-3B04	4	4.1	6	4.5
UF-3B06	6	6.1	8	5
UF-3B08	8	8.1	11	7
UF-3B10	10	10.1	13.5	8

### Nut Adaptor - (Brass)



Part number	OD	Ød	L	H	T
UF-3A04	4	4.1	12	8	M8*1.0
UF-3A06	6	6.1	12.5	10	M10*1.0
UF-3A08	8	8.1	14	14	M14*1.5
UF-3A10	10	10.1	15	16	M16*1.5

## High-pressure Polyamide Tube



Part number	Outer diameter	Inside diameter
UF-T-HP03	Ø6	Ø3
UF-T-HP04	Ø8.6	Ø4
UF-T-HP06	Ø11	Ø6.3

## Nylon tubing (BP in black; WP in white)



Part number	Outer diameter	Inside diameter
UF-T-BP06	Ø6	Ø3
UF-T-BP04	Ø4	Ø2.5
UF-T-WP06	Ø6	Ø4
UF-T-WP04	Ø4	Ø2

## Steel tubing - SS 316



Part number	Outer diameter	Inside diameter
UF-T-CP04	Ø4	Ø2
UF-T-CP06	Ø6	Ø4
UF-T-CP08	Ø8	Ø6
UF-T-CP10	Ø10	Ø8

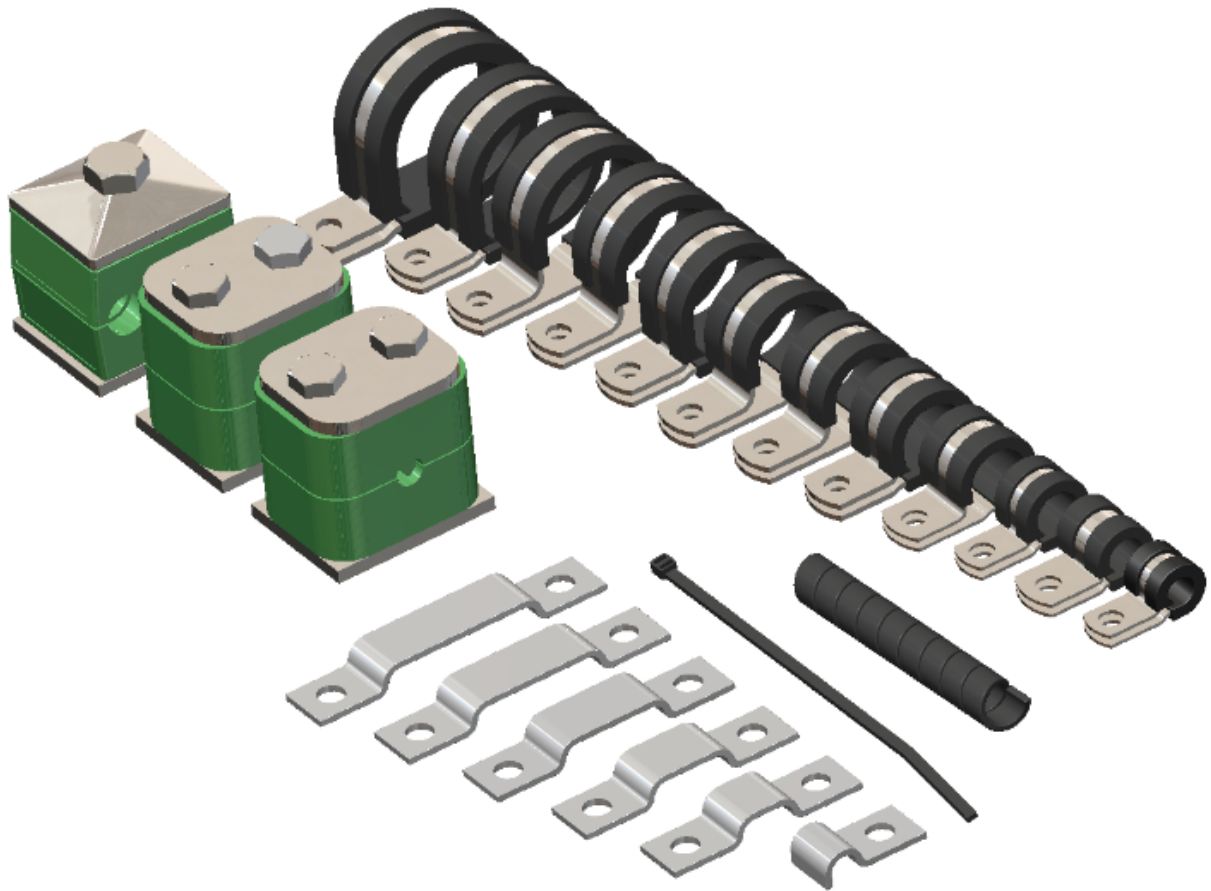
## Pipe Protective Spring coil



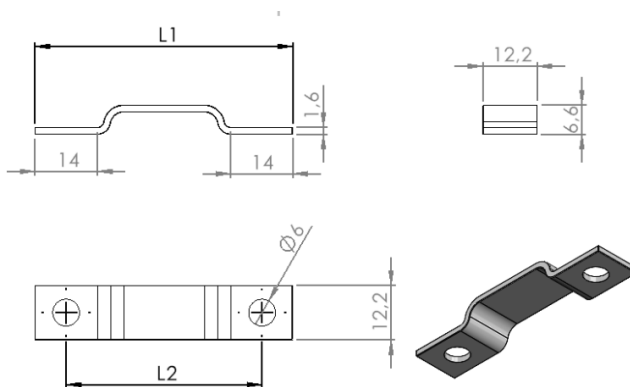
Part number	Ød	Suitable pipe outer diameter
UF-THT04	4.5	4
UF-THT06	6.5	6
UF-THT08	11	9.3



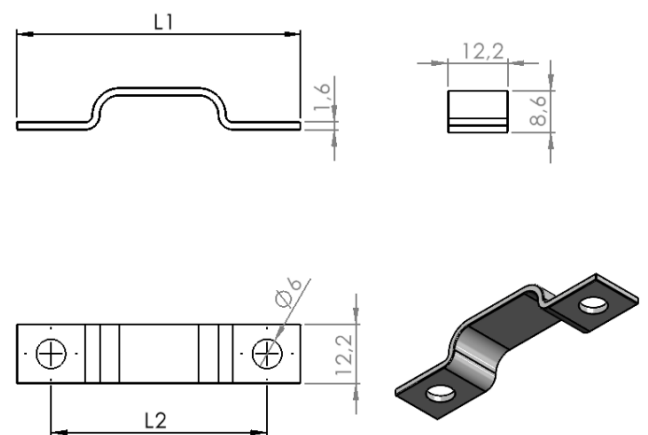
## Pipe & Tubing Fixures



6mm Steel Pipe Clamp Dims



6mm Steel Pipe Clamp Dims



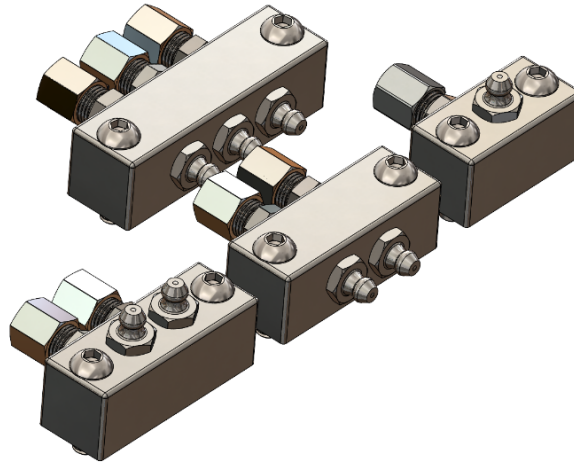
### Steel Pipe Clamps Mild Steel for 6 & 8mm Pipes- Galvanized Nickel

Part number	Description	Ref: - L1	Ref: L2	Material
UFL-GJ-6-1	Steel Pipe Clamp for 1 Pipe - 6mm	L1=24.5mm	-	Mild Steel Galvanized Nickel
UFL-GJ-6-2	Steel Pipe Clamp for 2 Pipes - 6mm	L1=45.7mm	L2=31.8mm	
UFL-GJ-6-3	Steel Pipe Clamp for 3 Pipes - 6mm	L1=51.7mm	L2=37.8mm	
UFL-GJ-6-4	Steel Pipe Clamp for 4 Pipes - 6mm	L1=57.7mm	L2=43.8mm	
UFL-GJ-6-5	Steel Pipe Clamp for 5 Pipes - 6mm	L1=63.7mm	L2=49.8mm	
UFL-GJ-6-6	Steel Pipe Clamp for 6 Pipes - 6mm	L1=69.7mm	L2=55.8mm	
UFL-GJ-8-1	Steel Pipe Clamp for 1 Pipe - 8mm	L1=26.2mm	-	
UFL-GJ-8-2	Steel Pipe Clamp for 2 Pipes - 8mm	L1=50.1mm	L2=36.2mm	
UFL-GJ-8-3	Steel Pipe Clamp for 3 Pipes - 8mm	L1=58.1mm	L2=44.2mm	
UFL-GJ-8-4	Steel Pipe Clamp for 4 Pipes - 8mm	L1=66.1mm	L2=52.8mm	
UF-M5MS	M5 Self Tapping Screw	M5X10mm		

### Steel Pipe Clamps Mild Steel for 6 & 8mm Pipes- Stainless Steel

Part number	Description	Ref: - L1	Ref: L2	Material
UFL-GJ-6-1-VA	Steel Pipe Clamp for 1 Pipe - 6mm	L1=24.5mm	-	Stainless Steel
UFL-GJ-6-2-VA	Steel Pipe Clamp for 2 Pipes - 6mm	L1=45.7mm	L2=31.8mm	
UFL-GJ-6-3-VA	Steel Pipe Clamp for 3 Pipes - 6mm	L1=51.7mm	L2=37.8mm	
UFL-GJ-6-4-VA	Steel Pipe Clamp for 4 Pipes - 6mm	L1=57.7mm	L2=43.8mm	
UFL-GJ-6-5-VA	Steel Pipe Clamp for 5 Pipes - 6mm	L1=63.7mm	L2=49.8mm	
UFL-GJ-6-6-VA	Steel Pipe Clamp for 6 Pipes - 6mm	L1=69.7mm	L2=55.8mm	
UFL-GJ-8-1-VA	Steel Pipe Clamp for 1 Pipe - 8mm	L1=26.2mm	-	
UFL-GJ-8-2-VA	Steel Pipe Clamp for 2 Pipes - 8mm	L1=50.1mm	L2=36.2mm	
UFL-GJ-8-3-VA	Steel Pipe Clamp for 3 Pipes - 8mm	L1=58.1mm	L2=44.2mm	
UFL-GJ-8-4-VA	Steel Pipe Clamp for 4 Pipes - 8mm	L1=66.1mm	L2=52.8mm	
UF-M5MS	M5 Self Tapping Screw SS	M5X10mm		

## Remote Grease Port Manifolds for 90° applications



Part number	Description	Length	Square	Material
UF-1PM90°-1/8	1 PORT MANIFOLD WITH 1/8" BSP THREADED HOLE	L=40mm	20mm	Stainless Steel
UF-2PM90°-1/8	2 PORT MANIFOLD WITH 1/8" BSP THREADED HOLE	L=55mm	20mm	
UF-3PM90°-1/8	3 PORT MANIFOLD WITH 1/8" BSP THREADED HOLE	L=70mm	20mm	
UF-4PM90°-1/8	4 PORT MANIFOLD WITH 1/8" BSP THREADED HOLE	L=85mm	20mm	
UF-5PM90°-1/8	5 PORT MANIFOLD WITH 1/8" BSP THREADED HOLE	L=100mm	20mm	
UF-6PM90°-1/8	6 PORT MANIFOLD WITH 1/8" BSP THREADED HOLE	L=115mm	20mm	
UF-BHS-M6X25	Button Head Screw	M6X25		
UF-GN-1/8BSPT	Grease Nipple 1/8" Bspt			

## Remote Grease Port Manifolds for parallel applications

Part number	Description	Length	Square	Material
UF-1PM-1/8	1 PORT MANIFOLD WITH 1/8" BSP THREADED HOLE	L=40mm	20mm	Stainless Steel
UF-2PM-1/8	2 PORT MANIFOLD WITH 1/8" BSP THREADED HOLE	L=55mm	20mm	
UF-3PM-1/8	3 PORT MANIFOLD WITH 1/8" BSP THREADED HOLE	L=70mm	20mm	
UF-4PM-1/8	4 PORT MANIFOLD WITH 1/8" BSP THREADED HOLE	L=85mm	20mm	
UF-5PM-1/8	5 PORT MANIFOLD WITH 1/8" BSP THREADED HOLE	L=100mm	20mm	
UF-6PM-1/8	6 PORT MANIFOLD WITH 1/8" BSP THREADED HOLE	L=115mm	20mm	
UF-BHS-M6X25	Button Head Screw	M6X25		
UF-GN-1/8BSPT	Grease Nipple 1/8" Bspt			

\*\* Connectors, grease nipples and screws to be ordered separately

## Spiralwrap



Part number	Ød	Suitable pipe outer diameter
UF-THL08-1	8	6
UF-THL10-1	10	8.6
UF-THL12-1	12	11.2

## Cable tie



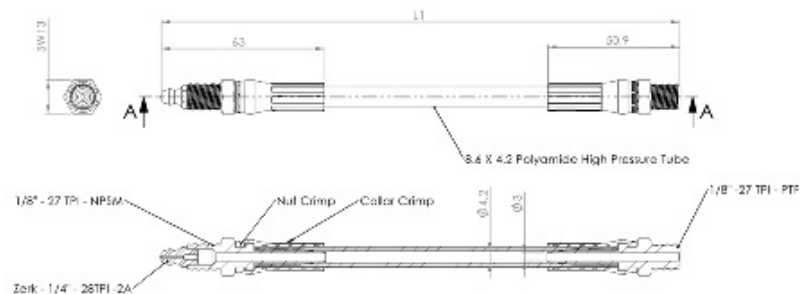
Part number	Width	Length	Material
UF-ZDCH5200	5	200	Nylon
UF-ZDCH5300	5	300	
UF-ZDCH5500	5	500	

## R Pipe clamp



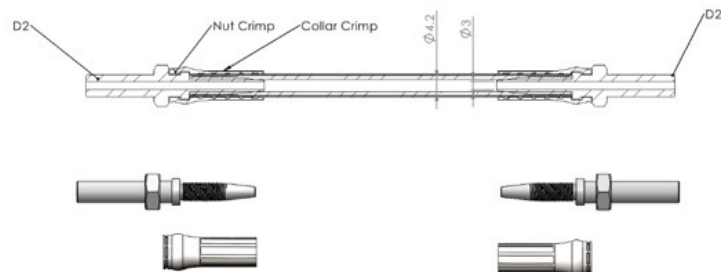
Part number	Ød	Mounting hole
UF-RC06	6	6.4mm
UF-RC08	8	6.4mm
UF-RC10	10	6.4mm
UF-RC12	12	6.4mm
UF-RC14	14	6.4mm
UF-RC16	16	6.4mm
UF-RC18	18	6.4mm
UF-RC20	20	6.4mm
UF-RC22	22	6.4mm
UF-RC25	25	6.4mm
UF-RC28	28	6.4mm
UF-RC30	30	6.4mm

## Hose Connections for 8.4mm hose crimped with grease nipple Carbon Steel-Zinc Nickel, CR Free with option in SS



Item Code	Alt Item Code	Description	Dim Ref L1	Dim Ref 2	Max Pressure
UF-CZF-200MS		Crimped Sleeve for 8.4mm hose	L1=200mm	1/8" BSPT	350 Bar
UF-CZF-250MS		Crimped Sleeve for 8.4mm hose	L1=250mm	1/8" BSPT	350 Bar
UF-CZF-300MS		Crimped Sleeve for 8.4mm hose	L1=300mm	1/8" BSPT	350 Bar
UF-CZF-400MS		Crimped Sleeve for 8.4mm hose	L1=400mm	1/8" BSPT	350 Bar
UF-CZF-500MS		Crimped Sleeve for 8.4mm hose	L1=500mm	1/8" BSPT	350 Bar
UF-CZF-750MS		Crimped Sleeve for 8.4mm hose	L1=750mm	1/8" BSPT	350 Bar
UF-CZF-1000MS		Crimped Sleeve for 8.4mm hose	L1=1000mm	1/8" BSPT	350 Bar
UF-CZF-200SS		Crimped Sleeve for 8.4mm hose	L1=200mm	1/8" BSPT	350 Bar
UF-CZF-250SS		Crimped Sleeve for 8.4mm hose	L1=250mm	1/8" BSPT	350 Bar
UF-CZF-300SS		Crimped Sleeve for 8.4mm hose	L1=300mm	1/8" BSPT	350 Bar
UF-CZF-400SS		Crimped Sleeve for 8.4mm hose	L1=400mm	1/8" BSPT	350 Bar
UF-CZF-500SS		Crimped Sleeve for 8.4mm hose	L1=500mm	1/8" BSPT	350 Bar
UF-CZF-750SS		Crimped Sleeve for 8.4mm hose	L1=750mm	1/8" BSPT	350 Bar
UF-CZF-1000SS		Crimped Sleeve for 8.4mm hose	L1=1000mm	1/8" BSPT	350 Bar

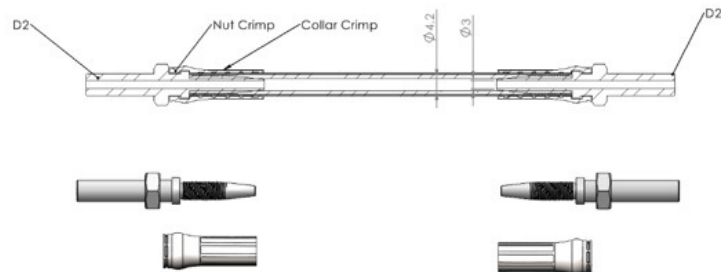
Hose Connections for 8.4mm hose crimped with 6mm Standpipe  
Carbon Steel-Zinc Nickel, CR Free with option in SS



Item Code	Alt Item Code	Description	Dim Ref L1	Dim Ref 2	Max Pressure
UF-6F-200MS		Crimped Sleeve for 8.4mm hose	L1=200mm	6MM	350 Bar
UF-6F-250MS		Crimped Sleeve for 8.4mm hose	L1=250mm	6MM	350 Bar
UF-6F-300MS		Crimped Sleeve for 8.4mm hose	L1=300mm	6MM	350 Bar
UF-6F-400MS		Crimped Sleeve for 8.4mm hose	L1=400mm	6MM	350 Bar
UF-6F-500MS		Crimped Sleeve for 8.4mm hose	L1=500mm	6MM	350 Bar
UF-6F-750MS		Crimped Sleeve for 8.4mm hose	L1=750mm	6MM	350 Bar
UF-6F-1000MS		Crimped Sleeve for 8.4mm hose	L1=1000mm	6MM	350 Bar
UF-6F-200SS		Crimped Sleeve for 8.4mm hose	L1=200mm	6MM	350 Bar
UF-6F-250SS		Crimped Sleeve for 8.4mm hose	L1=250mm	6MM	350 Bar
UF-6F-300SS		Crimped Sleeve for 8.4mm hose	L1=300mm	6MM	350 Bar
UF-6F-400SS		Crimped Sleeve for 8.4mm hose	L1=400mm	6MM	350 Bar
UF-6F-500SS		Crimped Sleeve for 8.4mm hose	L1=500mm	6MM	350 Bar
UF-6F-750SS		Crimped Sleeve for 8.4mm hose	L1=750mm	6MM	350 Bar
UF-6F-1000SS		Crimped Sleeve for 8.4mm hose	L1=1000mm	6MM	350 Bar

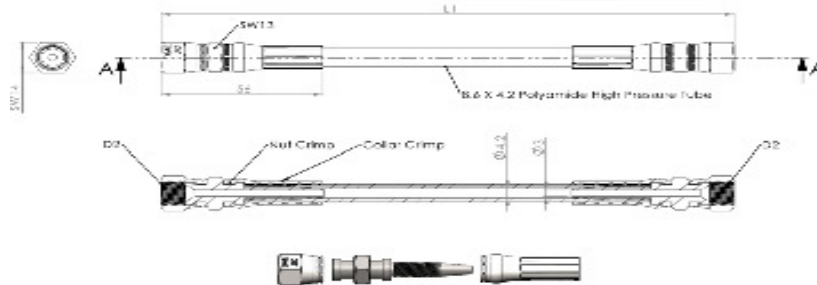


## Hose Connections for 8.4mm hose crimped with 8mm Standpipe Carbon Steel-Zinc Nickel, CR Free with option in SS



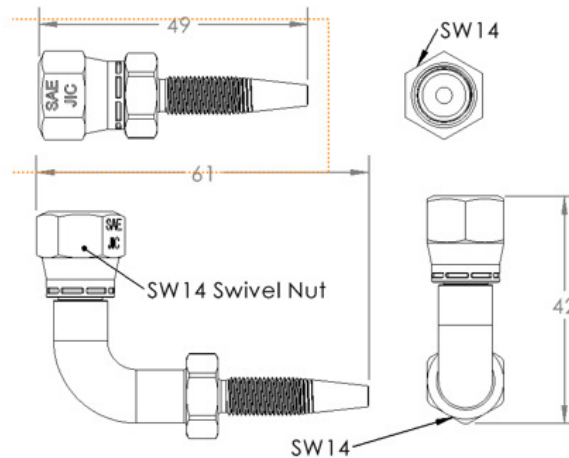
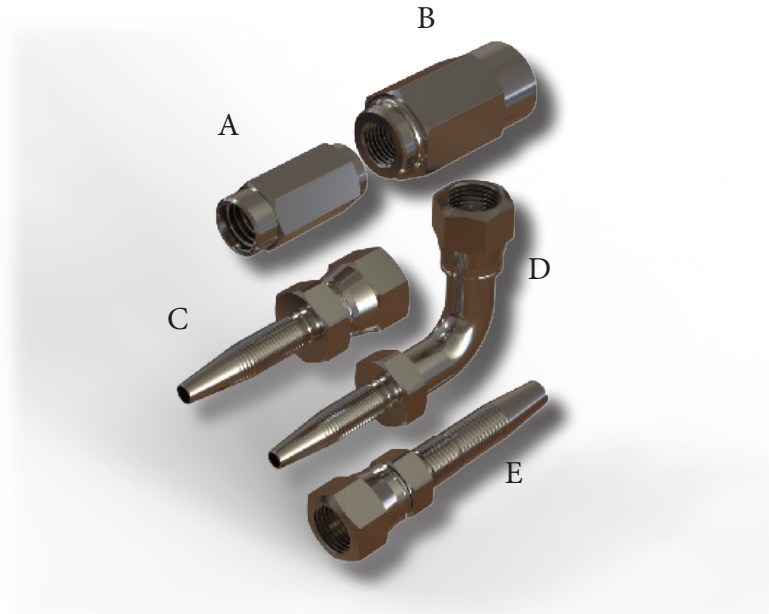
Item Code	Alt Item Code	Description	Dim Ref L1	Dim Ref 2	Max Pressure
UF-8F-200MS		Crimped Sleeve for 8.4mm hose	L1=200mm	8MM	350 Bar
UF-8F-250MS		Crimped Sleeve for 8.4mm hose	L1=250mm	8MM	350 Bar
UF-8F-300MS		Crimped Sleeve for 8.4mm hose	L1=300mm	8MM	350 Bar
UF-8F-400MS		Crimped Sleeve for 8.4mm hose	L1=400mm	8MM	350 Bar
UF-8F-500MS		Crimped Sleeve for 8.4mm hose	L1=500mm	8MM	350 Bar
UF-8F-750MS		Crimped Sleeve for 8.4mm hose	L1=750mm	8MM	350 Bar
UF-8F-1000MS		Crimped Sleeve for 8.4mm hose	L1=1000mm	8MM	350 Bar
UF-8F-200SS		Crimped Sleeve for 8.4mm hose	L1=200mm	8MM	350 Bar
UF-8F-250SS		Crimped Sleeve for 8.4mm hose	L1=250mm	8MM	350 Bar
UF-8F-300SS		Crimped Sleeve for 8.4mm hose	L1=300mm	8MM	350 Bar
UF-8F-400SS		Crimped Sleeve for 8.4mm hose	L1=400mm	8MM	350 Bar
UF-8F-500SS		Crimped Sleeve for 8.4mm hose	L1=500mm	8MM	350 Bar
UF-8F-750SS		Crimped Sleeve for 8.4mm hose	L1=750mm	8MM	350 Bar
UF-8F-1000SS		Crimped Sleeve for 8.4mm hose	L1=1000mm	8MM	350 Bar

Hose Connections for 8.4mm hose crimped Swivel Nut 7/16" (37°) UNF  
Carbon Steel-Zinc Nickel, CR Free with option in SS



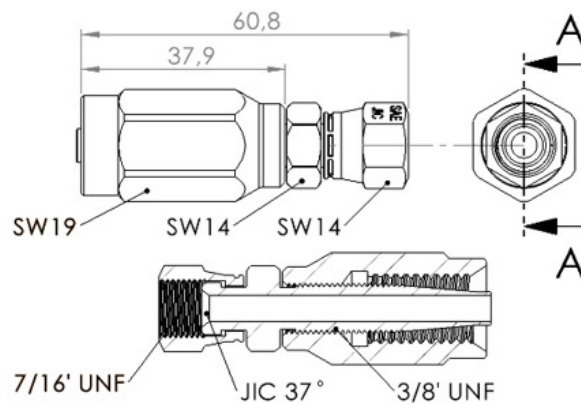
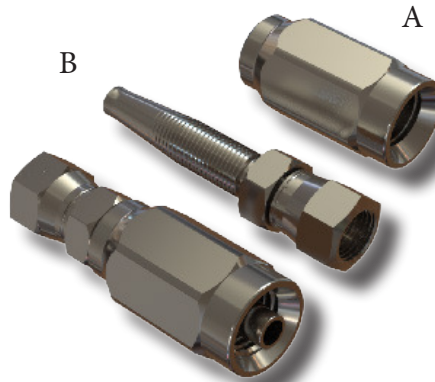
Item Code	Alt Item Code	Description	Dim Ref L1	Dim Ref 2	Max Pressure
UF-JIC-200MS		Crimped Sleeve for 8.4mm hose	L1=200mm	7/16" UNF	350 Bar
UF-JIC-250MS		Crimped Sleeve for 8.4mm hose	L1=250mm	7/16" UNF	350 Bar
UF-JIC-300MS		Crimped Sleeve for 8.4mm hose	L1=300mm	7/16" UNF	350 Bar
UF-JIC-400MS		Crimped Sleeve for 8.4mm hose	L1=400mm	7/16" UNF	350 Bar
UF-JIC-500MS		Crimped Sleeve for 8.4mm hose	L1=500mm	7/16" UNF	350 Bar
UF-JIC-750MS		Crimped Sleeve for 8.4mm hose	L1=750mm	7/16" UNF	350 Bar
UF-JIC-1000MS		Crimped Sleeve for 8.4mm hose	L1=1000mm	7/16" UNF	350 Bar
UF-JIC-200SS		Crimped Sleeve for 8.4mm hose	L1=200mm	7/16" UNF	350 Bar
UF-JIC-250SS		Crimped Sleeve for 8.4mm hose	L1=250mm	7/16" UNF	350 Bar
UF-JIC-300SS		Crimped Sleeve for 8.4mm hose	L1=300mm	7/16" UNF	350 Bar
UF-JIC-400SS		Crimped Sleeve for 8.4mm hose	L1=400mm	7/16" UNF	350 Bar
UF-JIC-500SS		Crimped Sleeve for 8.4mm hose	L1=500mm	7/16" UNF	350 Bar
UF-JIC-750SS		Crimped Sleeve for 8.4mm hose	L1=750mm	7/16" UNF	350 Bar
UF-JIC-1000SS		Crimped Sleeve for 8.4mm hose	L1=1000mm	7/16" UNF	350 Bar

Hose Connections for 8.4mm & 11.2mm Hose 7/16" JIC (37°) Swivel Nut  
Carbon Steel-Zinc Nickel, CR Free with option in SS



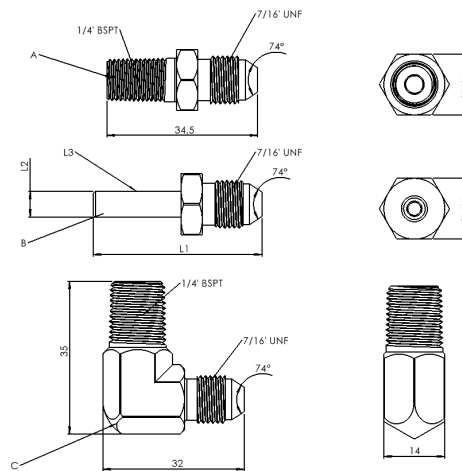
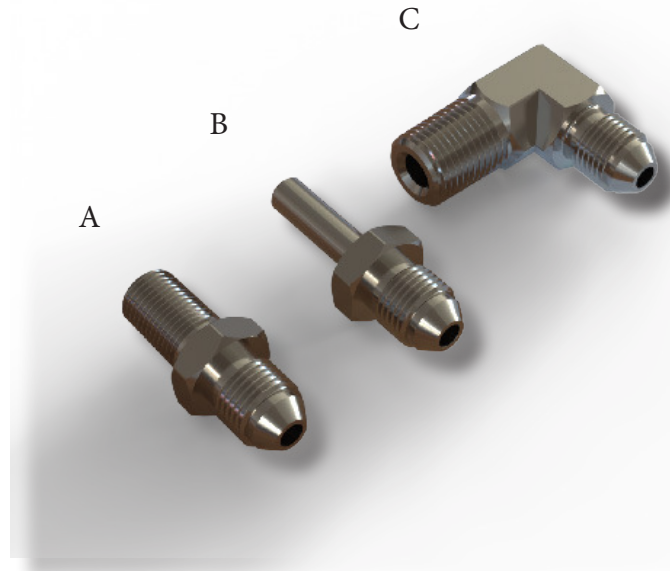
Item Code	Description	Dim Ref L1	Dim Ref 2	Max Pressure
UF-08MS-JIC	JIC Swivel Insert for 8.4mm Hose Str.	Hex=14	C	400 Bar
UF-08SS-JIC	JIC Swivel Insert for 8.4mm Hose Str.	Hex=14	C	400 Bar
UF-08MS-JIC90	JIC Swivel Insert for 8.4mm Hose 90°	Hex=14	D	400 Bar
UF-08SS-JIC90	JIC Swivel Insert for 8.4mm Hose 90°	Hex=14	D	400 Bar
UF-12MS-JIC	JIC Swivel Insert for 11.2mm Hose Str.	Hex=14	E	400 Bar
UF-12SS-JIC	JIC Swivel Insert for 11.2mm Hose Str.	Hex=14	E	400 Bar
UF-K050	Threaded Sleeve for 8.4mm hose	Hex=12	A	400 Bar
UF-K050-VA	Threaded Sleeve for 8.4mm hose	Hex=12	A	400 Bar
UF-K060	Threaded Sleeve for 11.2mm hose	Hex=17	B	400 Bar
UF-K060-VA	Threaded Sleeve for 11.2mm hose	Hex=17	B	400 Bar

Hose Connections for 1/4" R1 Hose with 7/16" JIC (37°) Swivel Nut  
Carbon Steel-Zinc Nickel, CR Free with option in SS



Item Code	Description	Dim Ref L1	Dim Ref 2	Max Pressure
UF-R1INS-7/16MMS	R1 Insert with 7/16 Swivel 37° Stud 3/8 UNF MS	Hex=14, Sleeve 19	A	350 Bar
UF-R1INS-7/16MSS	R1 Insert with 7/16 Swivel 37° Stud 3/8 UNF SS	Hex=14, Sleeve 19	A	350 Bar
UF-R1S-SS	7/16 JIC Threaded Sleeve - R1(1/4") Hose SS	Hex 19mm	B	350 Bar
UF-R1S-MS	7/16 JIC Threaded Sleeve - R1(1/4") Hose MS	Hex 19mm	B	350 Bar

**Nipple Connections 7/16" JIC (37°) UNF**  
Carbon Steel-Zinc Nickel, CR Free with option in SS



Item Code	Description	Dim Ref L1	Dim Ref 2	Max Pressure
UF-JIC-1	7/16 JIC to 1/8 BSPT Nipple MS	24.5mm	A	350 Bar
UF-JIC-2	7/16 JIC to 1/4 BSPT Nipple MS	-	A	350 Bar
UF-7/16JIC1/8-01	7/16 JIC to 1/8 BSPT Nipple SS	24.5mm	A	350 Bar
UF-JIC-2SS	7/16 JIC to 1/4 BSPT Nipple SS	-	A	350 Bar
UF-JIC-6S	7/16 JIC to 6mm Standpipe Short Nipple MS	L3 =20mm	B	350 Bar
UF-JIC-6L	7/16 JIC to 6mm Standpipe Long Nipple MS	L3 =30mm	B	350 Bar
UF-JIC-6SS	7/16 JIC to 6mm Standpipe Short Nipple SS	L3 =20mm	B	350 Bar
UF-JIC-6LS	7/16 JIC to 6mm Standpipe Long Nipple MS	L3 =30mm	B	350 Bar
UF-JIC-8S	7/16 JIC to 8mm Standpipe Short Nipple MS	L3 =30mm	B	350 Bar
UF-JIC-8L	7/16 JIC to 8mm Standpipe Long Nipple MS	L3 =30mm	B	350 Bar
UF-JIC-8SS	7/16 JIC to 8mm Standpipe Short Nipple SS	L3 =30mm	B	350 Bar
UF-JIC-8LS	7/16 JIC to 8mm Standpipe Long Nipple SS	L3 =30mm	B	350 Bar
UF-JIC-1/8-90MS	7/16 JIC to 1/8 BSPT elbow Nipple MS	-	C	350 Bar
UF-JIC-1/8-90SS	7/16 JIC to 1/8 BSPT elbow Nipple SS	-	C	350 Bar
UF-JIC-1/4-90MS	7/16 JIC to 1/4 BSPT elbow Nipple MS	-	C	350 Bar
UF-JIC-1/4-90SS	7/16 JIC to 1/4 BSPT elbow Nipple MS	-	C	350 Bar



Series  
**OL500**



IP54  

**Wide Range of Oil Viscosity.  
Refillable On-Site. Cost Effective.**



Pulsarlube **OL500**



## Features & Advantages

### Outstanding Performance

- ▶ A vertical feed pump controlled by a microprocessor allows accurate dispensing and covers a wide viscosity range
- ▶ Large 500ml oil reservoir

### Cost Savings

- ▶ Lower maintenance costs than manual lubrication
- ▶ Refillable oil reservoir

### Multi-Point Lubrication

High output pressure (10bar) enables long lubelines and multi-point lubrication

### User Friendly Programming

Easy to program with built-in LCD and simple button controls

### Easy Maintenance

Transparent container for easy visual inspection of remaining oil

### Other Features

- ▶ Various dispensing settings to suit a wide range of industrial applications
- ▶ Auto Lockout mode to prevent unintentional system changes
- ▶ Easy to install in confined areas

## Typical Industries and Applications



- Bearings
- Chains
- Cable ropes
- Cable tracks
- Pumps
- Motors
- Escalators, etc.

## Overview

## Product Specifications



#### Oil Reservoir Capacity

500ml (refillable)

#### Power Supply

DC 4.5V Battery Pack (replaceable)

#### Operating Pressure

10bar (145psi) (depends on oil viscosity)

#### Operating Temperature

Standard Alkaline Battery :  
-15°C~60°C (5°F~140°F)  
Optional Lithium Battery :  
-40°C~60°C (-40°F~140°F)

#### Dispensing Periods

1, 2, 4, 6, 12, 18, 24 month & H (15 days)

#### Single Point Remote Installation

Max. 6m (20ft) with Ø4 tube

#### Multi-Point Installation

Max. 3m (10ft) with O.D. Ø4 tube  
(Up to 4 lube points)

#### Product Certifications & IP Code

IP54

#### Oil Viscosity Range

10~10,000 cSt@40°C

\* Special instructions available  
for 10~100 cSt@40°C

Series  
**S100**



**Ingenious Design for Easy Installation and Simple Operation.**



Pulsarlube **S**

### Features & Advantages

#### Innovative Design

The upward piston movement dramatically reduces grease hardening, the chronic issue of conventional spring type lubricators

#### More Reliable Lubrication

More reliable than other conventional spring type lubricators by minimizing the problem of oil separation

#### Cost Savings

Prevent plant downtime and save on manpower consumption for manual lubrication

#### User Friendly

- ▶ Available pre-filled and can be installed right out of the box
- ▶ Grease dispensing rate can be easily adjusted by using a control knob
- ▶ Refillable and reusable

### Typical Industries and Applications



The following equipment will benefit from using the Pulsarlube S

- Ball, roller bearings
- Shield bearings
- Bronze, oilite or open bearings
- Applications where a bearing flush is necessary

### Overview



### Product Specifications

#### Grease Pouch Capacity

100ml (refillable)

#### Operating Method

Spring

#### Operating Pressure

N/A

#### Operating Temperature

-20°C~100°C (-4°F~212°F)

#### Dispensing Periods

5 Dial Settings

#### Single Point Remote Installation

N/A

#### Multi-Point Installation

N/A

Series  
M60/M125/M250/M500



CE FCC IP65  

**Total Reliability - Advanced Diagnostics, Unrivalled Output Pressure, Wide Temp Capability.**



Pulsarlube **M**



### Features & Advantages

#### Cost Savings

Substantial savings from the use of replaceable grease pouches and battery packs (Service Pack)

#### Remote Installation

High output pressure (30bar) enables remote installation up to 10m (33ft)

#### Multi-Point Installation

Up to 8 lube points using Ø6 tube, Max. 6m (20ft) per point

#### Simple Operation

Easy to program with built-in LCD and simple button controls

#### Convenient Maintenance

Transparent container for easy visual inspection of remaining lubricant

#### Other Features

- ▶ Various dispensing settings & grease pouch volumes to suit a wide range of industrial applications
- ▶ Auto Lock Out mode to prevent unintentional mode changes
- ▶ Easy to install in hazardous & confined areas

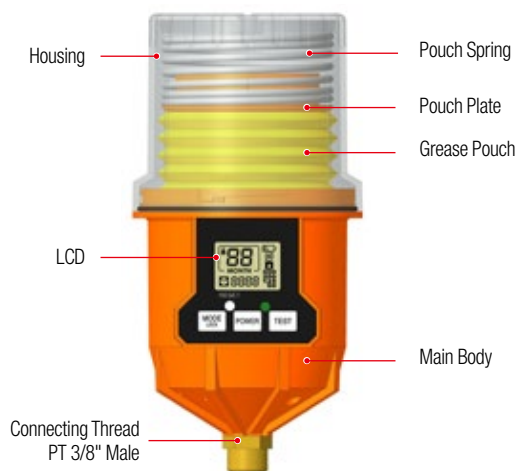
### Typical Industries and Applications



- Automotive plants, iron/steel mills and nuclear power plants
- Cleanrooms & LM Guides where precise, multi-point lubrication is needed
- HVAC equipment & cooling towers where long lube lines may be necessary

- Motors and pumps in city water & wastewater treatment facilities
- Any places with extreme (low or high) temperature

### Overview



### Product Specifications

#### Grease Pouch Capacity

60ml / 125ml / 250ml / 500ml  
(capacity setting available)

#### Power Supply

DC 4.5V Battery Pack (replaceable)  
Standard : Alkaline Battery  
Optional : Lithium Battery

#### Operating Pressure

30~60bar (435~870psi)

#### Operating Temperature

Standard Alkaline Battery :  
-15°C~60°C (5°F~140°F)  
Optional Lithium Battery :  
-40°C~60°C (-40°F~140°F)

#### Dispensing Periods

1~12 month

#### Single Point Remote Installation

Max. 10m (33ft) with Ø6 tube

#### Multi-Point Installation

Max. 6m (20ft) with Ø6 tube  
(Up to 8 lube points)

#### Dispensing Volume Size

0.34ml/stroke (@20°C/68°F)

#### Product Certifications & IP Code

CE / KC / FCC / RoHS / IP65

Series  
MSP60/MSP125/MSP250/MSP500



More Reliable. More Efficient. More Precise.  
Machine Synchronized & Externally Powered.



Pulsarlube **MSP**



### Features & Advantages

#### Synchronized Lubrication

A pre-set amount of grease is delivered only when the equipment is in operation, avoiding the possibility of over lubrication and waste

#### Cost Savings

- ▶ There is no need to replace the battery pack for up to 5 years
- ▶ Substantial savings from the use of replaceable grease pouches and battery packs (Service Pack)
- ▶ Perfect solution to prolong machinery life by preventing under or over-lubrication and optimize maintenance efficiency

#### Other Features

- ▶ Various dispensing settings & grease pouch volumes to suit a wide range of industrial applications
- ▶ Easy to adjust dispensing periods, even while in operation
- ▶ Transparent container for easy visual inspection of remaining lubricant

### Typical Industries and Applications



- Motors & pumps
- Equipment that is shut down or in stand-by for long periods of time
- Electronics & automobiles
- Cleanrooms where over-lubrication is critically monitored

### Product Specifications

#### Grease Pouch Capacity

60ml / 500ml (pre-set)  
125ml / 250ml (capacity setting available)

#### Power Supply

External Power Supply (\*Backup Battery Required)

- 1) VAC  
AC-DC ADAPTOR (100~220V)
- 2) VDC  
DC-DC CONVERTOR (12V~24V)

#### Operating Pressure

30~60bar (435~870psi)

#### Operating Temperature

Standard Alkaline Battery :  
-15°C~60°C (5°F~140°F)  
Optional Lithium Battery :  
-40°C~60°C (-40°F~140°F)

#### Dispensing Periods

60ml : 1~12 month  
125ml / 250ml : 1, 2, 3, 6, 12 month & H (15 days)  
500ml : 1, 2, 4, 6, 12, 18, 24 month & H (15 days)

\* MSP is also available for oil applications

#### Single Point Remote Installation

Max. 10m (33ft) with Ø6 tube

#### Multi-Point Installation

Max. 6m (20ft) with Ø6 tube  
(Up to 8 lube points)

#### Dispensing Volume Size

0.34ml/stroke (@20°C/68°F)

### Relay Specifications

#### Voltage Rate Input Range

VAC : 100~220V, 0.5A 50~60Hz  
VDC : 12V~24V

#### Voltage Rate Output Range

5.0V, 2A

#### Power ON Indicator

Red LED

#### Power Supply Dimensions

85 mm (D) x 49 mm (W) x 32 mm (H)

#### Wire Length From Power Supply

Input : 1m (3.3ft) Output : 4.5m (15ft)

#### Wire Length From MSP Lubricator

90mm (3.5in)



**HIGHLY EFFICIENT & COMPETITIVE  
DESICCANT BREATHERS**

Pulsarlube **AIR**

# PULSARLUBE® AIR AB-PX SERIES

Advanced protection even in high humidity & dust areas

Whenever pressure or fluid levels inside a reservoir fluctuates, airborne contaminants such as dust/dirt, moisture, and oxygen are drawn in through the breather vent port from the ambient environment.

These unwanted contaminants can expedite oxidation and corrosion, increase humidity leading to condensation and free water accumulation, cause oil emulsion, and lead to sludge or acid formation. This in turn results in frequent fluid and filter changes, increased operating and maintenance costs, and shortened equipment life.

Using desiccant breathers on reservoirs containing hydraulic fluid, oil, or other fluids can prevent possible contamination by filtering out dust, other airborne contaminants, and moisture.

**The Pulsarlube PX Breather is a proactive and effective maintenance countermeasure to keep the entire fluid system clean and to extend the storage and service life of fluids, even in high humidity and dust areas.**



#### Protection Against Ambient Air Exchange

Intake check valves limit air exchange with the environment until air flow is required, extending desiccant service life.



#### Superior Filtering Performance

The combination of an activated carbon filter, advanced electret filter, and baffle plate offers effective contamination control.



#### Extended Service Life

A larger volume of silica gel provides higher adsorption rates over comparable competitor products.



#### Longer Shelf Life

Premium packaging using a non-permeable, triple layer film guarantees long lasting shelf life.



#### Easy Maintenance

Simply replace the breather when the orange silica gel turns dark green.

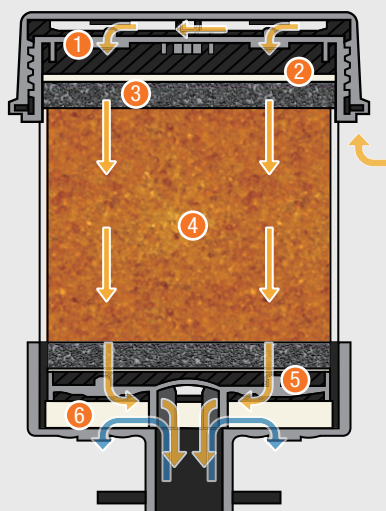


### Design & Features

Filters airborne contaminants

Dehumidifies

Prevents oil mist contamination  
from reservoir



- 1 Check Valve**  
prolongs life of desiccant by limiting ambient air exchange until air flow is required
- 2 Electret Filter (particle size > 2µm)**  
captures airborne dirt, dust, and other undesirable particles by electrostatic charge
- 3 Activated Carbon Filter**  
removes fumes and odor
- 4 Desiccant Silica Gel**  
turns from orange to green as it adsorbs moisture from incoming air
- 5 Baffle Plate**  
protects silica gel from oil mist contamination by providing a one-way barrier between the reservoir and silica gel
- 6 Oil Absorbent Foam**  
absorbs oil mist drawn in from reservoir



### Typical Industries and Applications



· Hydraulic Reservoirs



· Industrial Gearboxes



· Transformers



· IBC & Fluid Tanks



· Mobile Equipment



### Product Specifications

	AB-PX100	AB-PX101	AB-PX102
<b>Diameter</b>	5.54" / 14.07cm	5.54" / 14.07cm	5.54" / 14.07cm
<b>Height</b>	5.51" / 14cm	6.77" / 17.2cm	10.28" / 26.1cm
<b>Silica Gel</b>	440g	660g	1320g
<b>Mounting Connection</b>	1" slip fit	1" slip fit	1" slip fit
<b>Max. Adsorption Capacity</b>	160ml	279ml	538ml
<b>Max. Air Flow</b>	20cfm	20cfm	20cfm
<b>Max. Reservoir Fluid Flow</b>	150gpm	150gpm	150gpm
<b>Type of Desiccant</b>	100% Silica Gel	100% Silica Gel	100% Silica Gel

▼ From the left AB-PX102, 101, 100



#### NOTE

A variety of adaptors are available to connect Pulsarlube Air to most reservoir ports.





Series  
BT60/BT120/BT240



022-190186



KLT Co., Ltd.  
Model:  
BT60 CMIIT ID: 2019DJ0846  
BT120 CMIIT ID: 2019DJ0847  
BT240 CMIIT ID: 2019DJ1090

IP65

Patent Nr: 10-2010757



New Generation, Bluetooth-Enabled  
Automatic Lubricator.



Pulsarlube **BT**

### Features & Advantages

#### Convenient Lubrication Management

Conveniently control and monitor lubricators using the Pulsarlube mobile app  
Various grease pouch capacities and lubricant types available

#### Enhanced User-Friendliness

Straightforward installation and operation  
Easy to use app interface

#### Integrated DB Management

Keep track of operational status of all paired lubricators by using the integrated database

#### Safe Working Environment

Remotely monitor lubricator status in hazardous and inaccessible work areas  
via mobile app in close proximity

#### Outstanding Performance

- ▶ Bluetooth 4.1 enables connections up to 20m (66ft) away
- ▶ High output pressure enables remote installation up to 6m (20ft)
- ▶ Ingress Protection Rating : IP65

### Typical Industries and Applications



- Hard to reach areas where maintenance access is not easy
- Hazardous locations where it is not safe to perform routine maintenance
- Where bearings are located in close proximity
- Where lubrication management is tedious and inconvenient

### Overview



### Product Specifications

#### Grease Pouch Capacity

60ml / 120ml / 240ml (pre-set)

#### Power Supply

DC 4.5V Battery Pack (replaceable)  
Standard : Alkaline Battery  
Optional : Lithium Battery

#### Operating Pressure

30~60bar (435~870psi)

#### Operating Temperature

Standard Alkaline Battery :  
-15°C~60°C (5°F~140°F)  
Optional Lithium Battery :  
-40°C~60°C (-40°F~140°F)

#### Dispensing Periods

1~12 month

#### Single Point Remote Installation

Max. 6m (20ft) with Ø6 tube

#### Multi-Point Installation

Max. 3m (10ft) per point with Ø6 tube  
(Up to 8 lube points)

#### Dispensing Volume

0.34ml/stroke (@ 20°C/68°F)

#### Product Certifications & IP Code

CE / KC / FCC / SIG / NCC / RCM /  
SRRC / NBTC / ICASA / J-MIC / IP65

#### Bluetooth Range

5~20m depending on installation environment

#### Bluetooth Specifications

Bluetooth 4.1 (class 2)



Series

EXPL60/EXPL120/EXPL240/EXPL480



CE   IECEx NEPSI ETL IP65  

**High Reliability & Stability.**  
**Advanced Explosion Proof Capability.**



Pulsarlube **EXPL**





### Features & Advantages

### Global Hazardous Locations Certifications

- ▶ IECEx : Ex ic IIB T4 Gc (International)
- ▶ ATEX : II 3 G Ex ic IIB T4 Gc (EU)
- ▶ KCs : Ex ic IIB T4 (KR)
- ▶ NEPSI : Ex ic IIB T4 Gc (CN)
- ▶ ETL : Class I, Division 2, Groups A, B, C, & D, T4  
Class II, Division 2, Groups F, G, T4 (NA)

### High level of Ingress Protection

IP65 - dust tight and protected against water jets

### Applications

Specifically designed for safe use in highly hazardous locations containing flammable medium in the air (ignitable gases, vapors, and dust)

### Multi-Point Installation

Up to 8 lube points using a Lithium battery pack with max 60bar (870psi) operating pressure



### Typical Industries and Applications



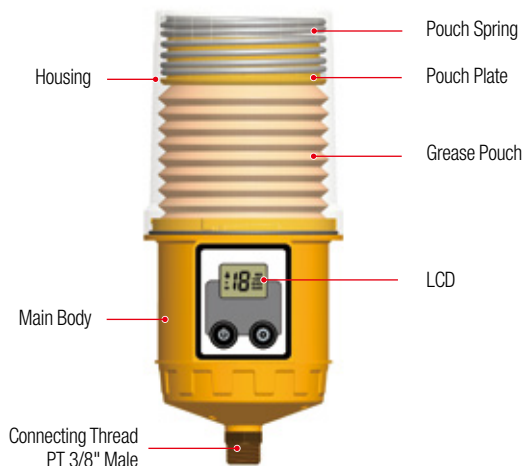
- Electric motors & pumps used in petrochemical plants, transportation of crude oil/natural gas, hot/cold rolling equipments in steel industry, cooling water treatment facility in power plants, etc.
- Applications in environments where flammable gases or vapors are present in quantities sufficient to produce explosive or ignitable mixtures
- Cooling tower pumps & motors at hydroelectric, thermal and nuclear power plants



### Overview



### Product Specifications



#### Grease Pouch Capacity

60ml / 120ml / 240ml / 480ml (pre-set)

#### Power Supply

DC 4.5V Battery Pack (replaceable)  
Standard (T4) : Alkaline Battery  
Optional (T5) : Lithium Battery  
\* 480ml : Lithium Battery Pack

#### Operating Pressure

30~60bar (435~870psi)

#### Operating Temperature

-15°C~50°C (5°F~122°F)  
\* Below 0°C (32°F) : Lithium Battery

#### Dispensing Periods

60ml : 1~12 month  
120ml~480ml : 1, 2, 3, 6, 9, 12 month

#### Single Point Remote Installation

Lithium Battery : Max. 6m (20ft) with Ø6 tube

#### Multi-Point Installation

Lithium Battery : Max. 3m (10ft) with Ø6 tube  
(Up to 8 lube points)

#### Dispensing Volume Size

0.34ml/stroke (@ 20°C/68°F)

#### Product Certifications & IP Code

ATEX / IECEx / KCs / ETL / NEPSI / CE / IP65

Series  
Mi60/Mi125/Mi250



Intelligent Integration of a Vibration Sensor Allowing  
Synchronization to Application.



Pulsarlube **Mi**

### Features & Advantages

#### Vibration Sensor

Lubricator operates only when vibration is detected on the installed application

#### Cost Savings

Substantial savings from the use of replaceable grease pouches and battery packs (Service Pack)

#### Easy Installation

Place the magnetic vibration sensor on any flat metal surface

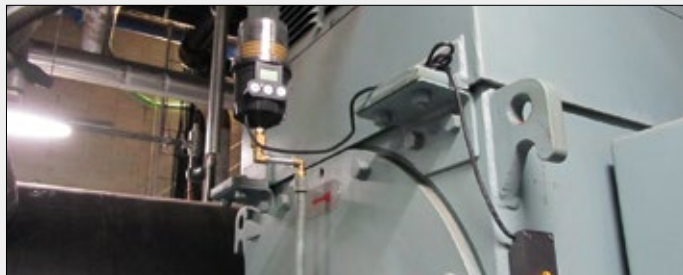
#### More Reliable & Precise Lubrication

A pre-set amount of grease is delivered only when the equipment is in operation, avoiding the possibility of over lubrication and waste

#### Other Features

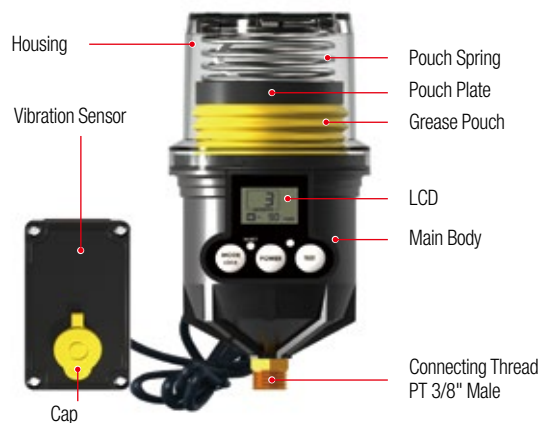
- ▶ Easy to adjust dispensing periods in operation
- ▶ Easy to install in hazardous & confined areas
- ▶ Transparent container for easy visual inspection of remaining lubricant

### Typical Industries and Applications



- Motors and pumps from municipal water & waste water treatment facilities
- Paper mills, steel mills and cement plants where water & excessive contaminants exist
- Electric motors, pumps, blowers and fans
- Applications where synchronized lubricators cannot be wired to an external power supply or PLC

### Overview



### Product Specifications

#### Grease Pouch Capacity

60ml / 125ml / 250ml  
(capacity setting available)

#### Power Supply

DC 4.5V Battery Pack (replaceable)  
Standard : Alkaline Battery  
Optional : Lithium Battery

#### Operating Pressure

30~60bar (435~870psi)

#### Operating Temperature

Standard Alkaline Battery :  
-15°C~60°C (5°F~140°F)  
Optional Lithium Battery :  
-40°C~60°C (-40°F~140°F)

#### Dispensing Periods

1~12 month

#### Single Point Remote Installation

Max. 1m (3.3ft) with Ø6 tube

#### Multi-Point Installation

Max. 1m (3.3ft) with Ø6 tube  
(Up to 2 lube points)

#### Dispensing Volume Size

0.34ml/stroke (@20°C/68°F)

#### Product Certifications & IP Code

CE / KC

#### Vibration Detector

Piezoelectric Cantilever-type Film Sensor  
Adjustable Sensitivity Range  
Connection Wire Length : 1.2m

#### Service Life of Battery Pack

60ml / 125ml : Up to 2 years  
250ml : Up to 1 year 6 months

#### Product Dimensions

183mm (H) x 91mm (Ø)  
\*Excludes Vibration Sensor



Series  
PLC60/PLC120/PLC240/PLC480



CE IP65



PLC Controlled. Remotely Monitored.  
Greater Lubrication Efficiency.



Pulsarlube **PLC**



### Features & Advantages

#### PLC Integration

Programmed to deliver fresh lubricant upon receiving a signal from the PLC

#### Consistent Lubrication

Precise lubrication on demand

#### Multi-Point Installation

Up to 8 lube points using Ø6 tube, Max. 6m (20ft) per point

#### High Output Pressure

30 ~ 60bar (435 ~ 870psi)

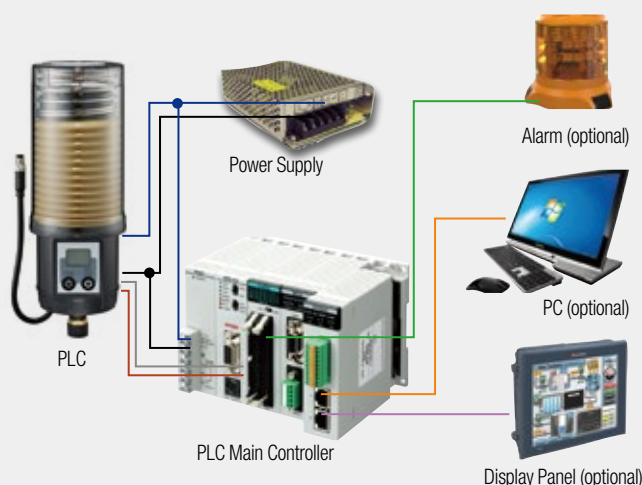
#### User-Controlled Lubrication

The user can program the dispensing rate based on the operating time of the equipment (INTERVAL type)

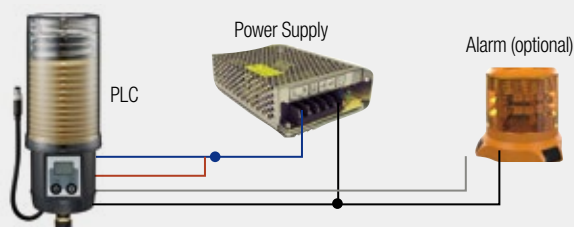


### PLC MONTH & INTERVAL TYPE Wire Connection Instructions

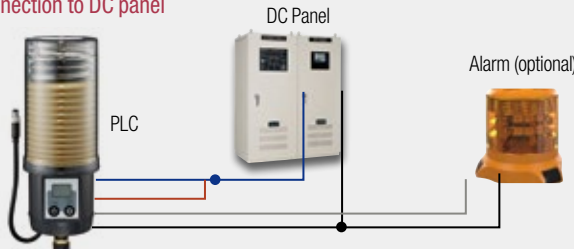
Applicable for both MONTH TYPE & INTERVAL TYPE



Connection to External Power Supply (DC Adapter for MONTH type only)



Connection to DC panel



### Overview



### Product Specifications



#### Grease Pouch Capacity

60ml / 120ml / 240ml / 480ml (pre-set)

#### Power Supply

9~36V DC (DC/DC Converter included)

#### Operating Pressure

30~60bar (435~870psi)

#### Operating Temperature

-20°C~60°C (-4°F~140°F)

#### Dispensing Periods

MONTH type : 1~12 month  
INTERVAL type : 1, 2, 3...6 Mode

#### Single Point Remote Installation

Max. 10m (33ft) with Ø6 tube

#### Multi-Point Installation

Max. 6m (20ft) with Ø6 tube  
(Up to 8 lube points)

#### Dispensing Volume Size

MONTH type : 0.34ml/stroke (@20°C/68°F)  
INTERVAL type :  
0.34ml x Mode selected (@20°C/68°F)

#### Product Certifications & IP Code

CE / KC / IP65

#### Output Voltage

Max. 1A (for alarm)

#### Product Type

Signal (MONTH type / INTERVAL type)

#### PLC Input/Output Types

Available in PNP or NPN

#### Dispensing Volume on Purge Mode

2ml (6 strokes)

Series  
EXP60/EXP120/EXP240/EXP480



CE Ex IECEx NEPSI IP65



Improved High Reliability & Stability  
in Hazardous Areas.



Pulsarlube **EXP**



### Features & Advantages

#### Global Hazardous Locations Certifications

- ▶ IECEx : Ex ic IIC T5/T4 Gc (International)
- ▶ ATEX : II 3 G Ex ic IIC T5/T4 Gc (EU)
- ▶ KCs : Ex ic IIC T5/T4 (KR)
- ▶ NEPSI : Ex ic IIC T5/T4 Gc (CN)

#### High level of Ingress Protection

IP65 - dust tight and protected against water jets

#### Applications

Specifically designed for safe use in highly hazardous locations containing flammable medium in the air (ignitable gases, vapors, and dust)

#### Multi-Point Installation

Up to 8 points using a Lithium battery pack with max 60bar (870psi) operating pressure

#### Other Functions

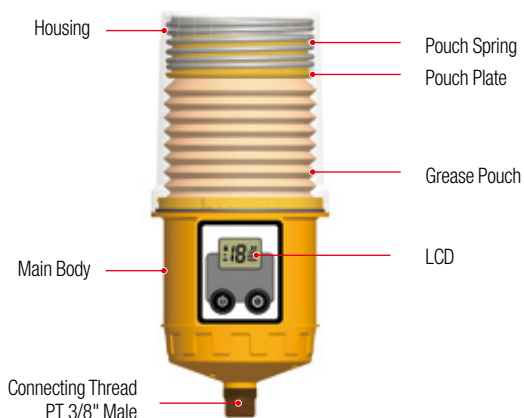
- ▶ Selectable grease pouch capacity & dispensing periods suitable for installations
- ▶ Auto Lock Out mode to prevent unintentional mode changes
- ▶ Easy to check LCD displays with backlight function

### Typical Industries and Applications



- Electric motors & pumps used in petrochemical plants, transportation of crude oil/natural gas, hot/cold rolling equipments in steel industry, cooling water treatment facility in power plants, etc.
- Applications in environments where flammable gases or vapors are present in quantities sufficient to produce explosive or ignitable mixtures
- Cooling tower pumps & motors at hydroelectric, thermal and nuclear power plants

### Overview



### Product Specifications

#### Grease Pouch Capacity

60ml / 120ml / 240ml / 480ml (pre-set)

#### Power Supply

DC 4.5V Battery Pack (replaceable)  
Standard (T4) : Alkaline Battery  
Optional (T5) : Lithium Battery  
**\* 480ml : Lithium Battery Pack**

#### Operating Pressure

30~60bar (435~870psi)

#### Operating Temperature

0°C~50°C (32°F~122°F)

#### Dispensing Periods

60ml : 1~12 month  
120ml~480ml : 1, 2, 3, 6, 9, 12 month

#### Single Point Remote Installation

Lithium Battery : Max. 6m (20ft) with Ø6 tube

#### Multi-Point Installation

Lithium Battery : Max. 3m (10ft) with Ø6 tube  
(Up to 8 lube points)

#### Dispensing Volume Size

0.34ml/stroke (@ 20°C/68°F)

#### Product Certifications & IP Code

ATEX / IECEx / KCs / CE / NEPSI / IP65